



# Fittings Product Catalog

Stainless Solutions For Life



About VNE.....	1
Neumo Ehrenberg Group.....	2
<b>CLAMP FITTINGS</b>	
Clamp Specifications.....	4
Clamp Industry Cross - Reference.....	5
Clamp Elbows.....	6-8
Clamp Tees.....	8
Clamp Cross.....	9
Clamp Ferrules.....	9-12
Clamp Adapters.....	12-15
Clamp Caps.....	15-16
Clamp Gaskets.....	16
Clamps.....	16-18
Clamp PSI Ratings.....	19
Clamp Lateral & True Y.....	19
Clamp Reducing Lateral.....	20
Clamp Adapter Reducers.....	20-24
Clamp Schedule 5 & 10 Ferrules,Caps, Clamps,Gaskets, & PSI Ratings.....	24-26
<b>WELD FITTINGS</b>	
Weld Specifications.....	27
Weld Industry Cross - Reference.....	29
Weld Elbows.....	30-33
Weld Tees.....	33-38
Weld Crosses, Stub Ends & Caps.....	38
Weld Lateral, True Y & Reducing Lateral.....	39
Weld Reducers.....	40-42
Weld Adapters.....	42
<b>BEVEL SEAT &amp; JOHN PERRY FITTINGS</b>	
Bevel Seat Specifications.....	43
Bevel Seat Industry Cross - Reference.....	45
Bevel Seat Elbows.....	46-47
Bevel Seat Tees.....	47
Bevel Seat Crosses & Hex Union Nuts.....	48
Bevel Seat Ferrules.....	48-51
Bevel Seat Caps.....	51
Bevel Seat Adapters.....	52-53
Bevel Seat Reducers.....	54-56
John Perry Ferrules, & Caps.....	57-58

## E-LINE FITTINGS

E-Line Specifications.....	59
E-Line Industry Cross - Reference.....	61
E-Line Elbows.....	62-63
E-Line Tees.....	63-64
E-Line Crosses.....	65
E-Line Ferrules.....	65-66
E-Line Adapters.....	66-67
E-Line Weld Ferrules.....	67
E-Line Adapters.....	67-70
E-Line Caps, Laterals, True Y, Gaskets & Clamps.....	71-72
E-Line Clamp PSI Ratings.....	73
E-Line Reducers.....	73-75
E-Line Schedule 5 (T316L), Short Welding Ferrules & Caps.....	76
E-Line Schedule 5 (T316L), Long Welding Ferrules & Clamps.....	77
E-Line EQ-Line.....	78

## UNPOLISHED TUBE OD FITTINGS

Unpolished Tube OD Specifications.....	79
Unpolished Tube OD Elbows.....	81-82
Unpolished Tube OD Tees.....	82-83
Unpolished Tube OD Crosses.....	83
Unpolished Tube OD Type A Stud with Grooves.....	83
Unpolished Tube OD Caps.....	84
Unpolished Tube OD Adapters.....	84
Unpolished Tube OD Laterals & True Y.....	85
Unpolished Tube OD Reducers.....	85-86
Unpolished Tube OD Flange & Rubber Hose Barb Blank.....	86

## Miscellaneous

European Din Specifications.....	87
European Din Nut & Gaskets.....	89
European Din Ferrules & Caps.....	89-90
European Din X Inch Weld Ferrules & Transitions.....	90-91
Pipe Hanger Specifications.....	92
Pipe Hangers.....	93
Speciality Products.....	94
Additional Products.....	95
Affiliations.....	96



## Stainless Steel Fittings & More

VNE Corporation, located in Janesville, WI - is a leading manufacturer of stainless steel fittings, valves, and specialty related products, both for sanitary and industrial applications. VNE also offers stainless steel sanitary and industrial tubing.

VNE Corporation is dedicated to continuing the traditions that have made its parent company a success; exceptional quality, advanced manufacturing technology, great customer service, and intensive research to develop new products directly related to customer needs. Our reputation is built on these principles.

VNE serves the dairy, food processing, beverage, pharmaceutical, brewery, cosmetics, chemical, water treatment, and many other industries. All orders - large or small - receive our immediate attention and carry the quality, name, and reputation of VNE.

## MaxPure, Worldwide Biopharmaceutical Fittings



Over the last decade, the Neumo Ehrenberg Group has become the leading manufacturer for worldwide Biopharmaceutical process fittings and components. With its three leading companies, NEUMO, VNE, and EGMO, the Neumo Ehrenberg Group has developed a worldwide distribution network supporting major Biopharmaceutical multinational accounts. MaxPure® was the first world-wide fitting brand to be certified by ASME-BPE.



**The NEUMO Ehrenberg Group is one of the World's largest privately owned manufacturers and distributors of stainless steel products and metal cutting tools.**

Founded in Germany in 1947 by the late Senator Henry Ehrenberg, the NEUMO Ehrenberg group employs more than 1,300 people worldwide.

The group is an integrated network of member companies operating in three core areas: Stainless Steel Flow Technology, Tooling, and Stainless Steel Trading.

In addition to sales, manufacturing and warehousing locations across three continents, the group is represented through a well-developed network of distributors in more than 40 countries. Worldwide, the NEUMO Ehrenberg group employs people that are dedicated to turning innovative ideas into leading products and engineering services in order to increase productivity, product quality and profitability for our customers.





## CLAMP FITTINGS....

Clamp Style Fittings are most popular for easy assembly and breakdown of process lines and equipment. VNE offers Clamp Fittings in T304 and T316L materials in 1/2" through 12" sizes.

Gaskets for Clamp Fittings are available in several different materials, Buna-N, EPDM, Silicone, Tef-Steel®, Teflon®, and Viton®. Lightweight and heavy-duty clamps complete the unions. VNE's Clamp Fittings meet all 3A requirements.

The "LA" designated product offering is available as a cost-effective alternative to our existing line of fittings and meets the industry expectations on high quality that you have come to expect from VNE. Fittings listed as [LA] are available in both our traditional offering and LA designated offering. Example: EG2C-6L1.5 (Traditional offering on 3A clamp by clamp 316L stainless steel 90° elbow) and LA-EG2C-6L1.5 (LA alternative on 3A clamp by clamp 316L stainless steel 90° elbow). Fittings listed as [LA ONLY] are products exclusive to the LA fitting product category.

## CLAMP FITTING SPECIFICATIONS....

**Size Range:** 1/2" OD through 12" OD

**Materials:** T304  
T316L

**Finish:** No. 7 - ID & OD  
No. 5 - OD only  
No. 3 - ID only  
No. 1 - unpolished

## ORDERING SPECIFICATIONS....

**Specify:**

- Quantity
- Product description or Part No.
- Size
- Material Type
- Polish Requirements

## LIMITED WARRANTY....

VNE Corporation products are warranted to be free from defects in material and workmanship for a period of one year from the date of shipment. Any product that proves to be defective shall be repaired or replaced at the option of VNE, providing it has been used as recommended and in strict accordance with recognized piping practices, and that has not been subject to extraordinary service, such as encountered under severe corrosive or abrasive conditions.

VNE makes no warranties, express or implied, other than those listed above.

VNE shall not be liable for any consequential, indirect, incidental or contingent damages.



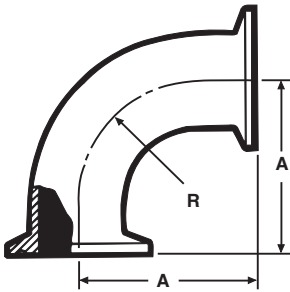


### CLAMP TYPE

VNE	ALFA LAVAL	WAUKESHA / SPX	BRADFORD	STEEL & O'BRIEN
EG2C	2CMP	2CMP	B2CMP	2CMP
EG2C31CC	2CMP-31MP	2CMP-31MP	B2CM31MP	2CMP-31MP
EG2FPR	2FMP-14	2FMP-14	B2FMP-14	2FMP-14
EG2WU	----	2UMP	B2WVMP	2UMP
EG2FTR	2FMP-15	2FMP-15	B2FMP-15	2FMP-15
EG2K	2KMP	2KMP	B2KMP	2KMP
EG7	7MP	7MP	B7MP	7MP
EG7R	7RMP	7RMP	B7MP	7RMP
EG9	9MP	9MP	B9MP	9MP
EG13	13MHLA	----	13MHLA	----
13MHHM	13MHHM	13MHHM	13MHHM-SN	13MHHM
13MHP	13MHP	13MHP	13MHP	13MHP
EG14HT	14MPHT	14MPHT	14MPHT	14MPHT
EG14W	14MPW	14MPW	14MPW	14MPW
EG14WL	14WLMP	14WLMP	14WLMP	14WLMP
EG14AM7	L14AM7	L14AM7	14AM7	L14AM7
EG2CS	14WMP	14WMP	14WMP	14WMP
EG14RT	14MPHR	14MPHR	14MPHR	14MPHR
EG16A	16AMP	16AMP	16AMP	16AMP
EG17PR	17MP-14	17MP-14	17MP-14	17MP-14
EG17TR	17MP-15	17MP-15	17MP-15	17MP-15
EG21	21MP	21MP	21MP	21MP
EG22	22MP	22MP	22MP	22MP
EG31R	31RMP	31RMP	----	31RMP
EG31CC	31-14MP	31-14MP	B3114MP	31-14MP
EG32CC	32-14MP	32-14MP	B3214MP	32-14MP
EG31PC	31PMP	31PMP	B14C31	31PMP
EG32PC	32PMP	32PMP	B14C32	32PMP
EG31CP	31MPP	31MPP	B31-14	31MPP
EG32CP	32MPP	32MPP	B32-15	32MPP
EG31TC	31TMP	31TMP	B15-C31	31TMP
EG32TC	32TMP	32TMP	B15-C32	32TMP
EG31CT	31MPT	31MPT	BC31-15	31MPT
EG32CT	32MPT	32MPT	BC32-15	32MPT
EG40	40MPU	40MPU	40MP-U	40MPU
EG40T	40MPG	40MPG	40MP-G	40MPG
EG23B	23BMP	23BMP	B28BMP	23BMP
EG28A	28AMP	28AMP	B28AMP	28AMP
EG28B	28BMP	28BMP	B31WMP	28BMP

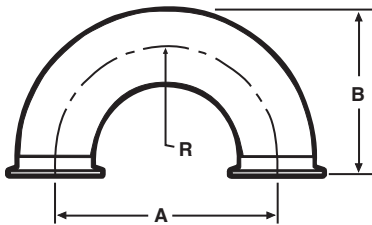


## EG2C / LA-EG2C - 90° ELBOW



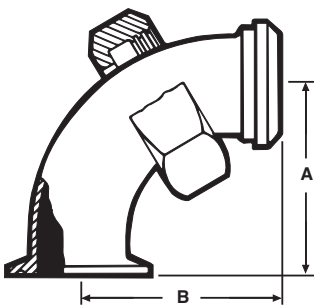
Size Tube OD	A	R
[LA] 1	2.000	1.500
[LA] 1 1/2	2.750	2.250
[LA] 2	3.500	3.000
[LA] 2 1/2	4.250	3.750
[LA] 3	5.000	4.500
[LA] 4	6.625	6.000
6	9.875	9.000
8	12.937	12.000

## EG2WU - CLAMP 180° U-BEND



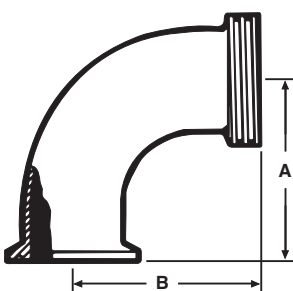
Size Tube OD	A	B	R
1/2	1.500	1.500	0.750
3/4	2.250	2.000	1.125
1	3.000	2.500	1.500
1 1/4	3.750	3.000	1.875
1 1/2	4.500	3.500	2.250
2	6.000	4.500	3.000
2 1/2	7.500	5.500	3.750
3	9.000	6.500	4.500
4	12.000	8.625	6.000
6	18.000	12.875	9.000

## EG2FPR - 90° ELBOW



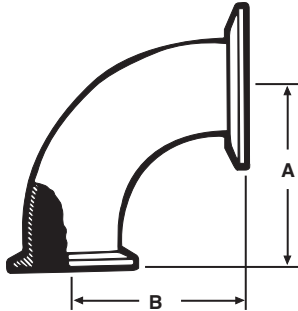
Size Tube OD	A	B
1	2.000	2.875
1 1/2	2.750	2.968
2	3.500	3.718
2 1/2	4.250	4.593
3	5.000	5.406
4	6.625	7.218

## EG2FTR - 90° ELBOW



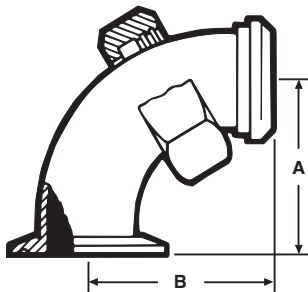
Size Tube OD	A	B
1	2.000	2.187
1 1/2	2.750	2.968
2	3.500	3.718
2 1/2	4.250	4.593
3	5.000	5.406
4	6.625	7.218

## EG2C31CC - 90° REDUCING ELBOW (Non-Tapered)



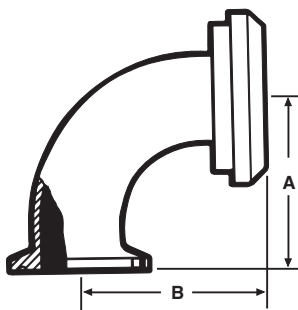
Size Tube OD	A	B
2 x 1	2.000	2.000
2 x 1 1/2	2.750	2.750
2 1/2 x 1 1/2	2.750	2.750
2 1/2 x 2	3.500	3.500
3 x 1 1/2	2.750	2.750
3 x 2	3.500	3.500
3 x 2 1/2	4.250	4.250
4 x 2 1/2	4.250	4.375
4 x 3	5.000	5.125
6 x 4	6.625	6.875

## EG231-FPR 90° REDUCING ELBOW (Non-Tapered)



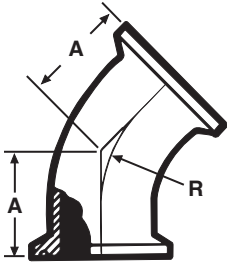
Size Tube OD	A	B
2 x 1	2.000	2.187
2 x 1 1/2	2.750	2.968
2 1/2 x 1 1/2	2.750	2.968
2 1/2 x 2	3.500	3.718
3 x 1 1/2	2.750	2.968
3 x 2	3.500	3.718
3 x 2 1/2	4.250	4.593
4 x 2 1/2	4.375	4.593
4 x 3	5.125	5.406

## EG2C31PR - 90° REDUCING ELBOW (Non-Tapered)



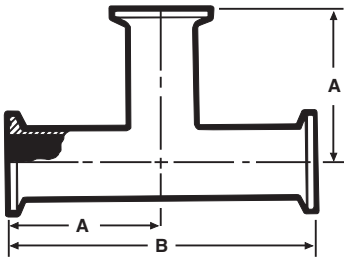
Size Tube OD	A	B
2 x 1	2.000	2.250
2 x 1 1/2	2.750	3.000
2 1/2 x 1 1/2	2.750	3.031
2 1/2 x 2	3.500	3.781
3 x 1 1/2	2.750	3.593
3 x 2	3.500	3.843
3 x 2 1/2	4.250	4.593
4 x 2 1/2	4.250	4.687
4 x 3	5.000	5.437

## EG2K / LA-EG2K - 45° ELBOW



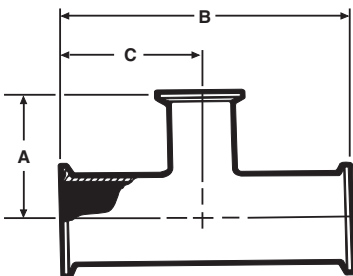
	Size Tube OD	A	R
[LA]	1	1.125	1.500
[LA]	1 1/2	1.437	2.250
[LA]	2	1.750	3.000
[LA]	2 1/2	2.062	3.750
[LA]	3	2.375	4.500
[LA]	4	3.125	6.000
	6	4.625	9.000
	8	5.312	12.000

## EG7 / LA-EG7 - TEE



	Size Tube OD	A	B
[LA]	1	2.375	4.750
[LA]	1 1/2	2.750	5.500
[LA]	2	3.500	7.000
[LA]	2 1/2	3.500	7.000
[LA]	3	3.750	7.500
[LA]	4	4.500	9.000
	6	6.500	13.000
	8	9.937	19.875

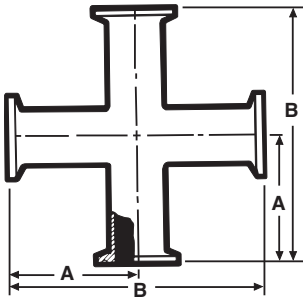
## EG7R - REDUCING TEE



	Size Tube OD	A	B	C
	1 1/2 x 1	1.875	4.312	2.156
	2 x 1	2.125	5.125	2.562
	2 x 1 1/2	2.406	5.125	2.562
	2 1/2 x 1 1/2	2.656	5.687	2.843
	2 1/2 x 2	2.812	5.687	2.843
	3 x 1 1/2	2.906	6.187	3.093
	3 x 2	3.062	6.187	3.093
	3 x 2 1/2	3.093	6.187	3.093
	4 x 2	3.593	8.125	4.062
	4 x 2 1/2	3.593	8.125	4.062
	4 x 3	3.593	8.125	4.062
	6 x 3	6.125	13.000	6.500
	6 x 4	6.250	13.000	6.500

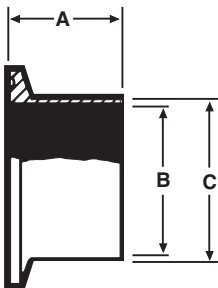


## EG9 - CROSS



Size Tube OD	A	B
1	2.375	4.750
1 1/2	2.750	5.500
2	3.500	7.000
2 1/2	3.500	7.000
3	3.750	7.500
4	4.500	9.000
6	8.875	17.340

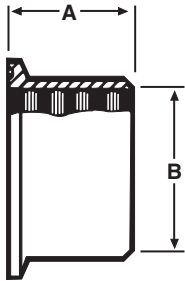
## EG14AM7 / LA-EG14AM7 - LONG WELDING FERRULE



Size Tube OD	A	B	C
[LA] 1/2*	1.125	0.370	0.500
[LA] 3/4*	1.125	0.620	0.750
[LA] 1	1.125	0.870	1.000
[LA] 1 1/2	1.125	1.370	1.500
[LA] 1 1/4	1.125	1.120	1.250
[LA] 2	1.125	1.870	2.000
[LA] 2 1/2	1.125	2.370	2.500
[LA] 3	1.125	2.870	3.000
[LA] 4	1.125	3.834	4.000
5	1.500	4.782	5.000
[LA] 6	1.500	5.780	6.000
[LA] 8	1.500	7.782	8.000
[LA] 10	1.500	9.732	10.000
[LA] 12	1.500	11.732	12.000

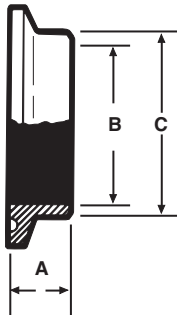
\*Length changed from 2.000 to 1.125 on January 1st, 2019

## EG14R - RECESSLESS FERRULE (Expanding)



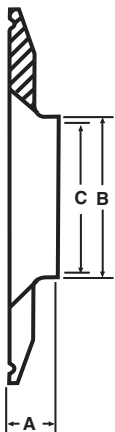
Size Tube OD	A	B
1	0.750	1.000
1 1/2	1.125	1.500
2	1.312	2.000
2 1/2	1.375	2.500
3	1.437	3.000
4	1.500	4.000

## EG2CS / LA-EG2CS - SHORT WELDING FERRULE



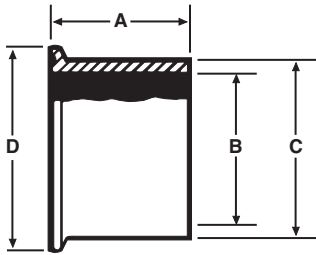
Size Tube OD	A	B
1/4	0.500	0.120
3/8	0.500	0.245
[LA] 1/2	0.500	0.370
5/8	0.500	0.495
[LA] 3/4	0.500	0.620
[LA] 1	0.500	0.870
1 1/4	0.500	1.120
[LA] 1 1/2	0.500	1.370
[LA] 2	0.500	1.870
[LA] 2 1/2	0.500	2.370
[LA] 3	0.500	2.870
[LA] 4	0.625	3.834
5	0.750	4.780
[LA] 6	0.875	5.780
[LA] 8	0.937	7.782
[LA] 10	0.937	9.732
[LA] 12	0.937	11.732

## EG2CS31D - SHORT REDUCING CLAMP FERRULES



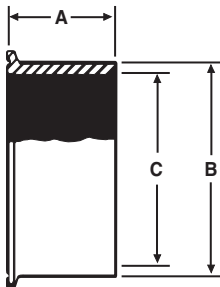
Size Tube OD	A	B	C
1 x 1/2	0.500	0.500	0.370
1 x 3/4	0.500	0.750	0.620
1 1/2 x 1	0.500	1.000	0.870
2 x 1	0.500	1.000	0.870
2 x 1 1/2	0.500	1.500	1.370
2 1/2 x 1 1/2	0.500	1.500	1.370
2 1/2 x 2	0.500	2.000	1.870
3 x 1	0.500	1.000	0.870
3 x 1 1/2	0.500	1.500	1.370
3 x 2	0.500	2.000	1.870
3 x 2 1/2	0.500	2.500	2.370
4 x 1 1/2	0.625	1.500	1.370
4 x 2	0.625	2.000	1.870
4 x 2 1/2	0.625	2.500	2.370
4 x 3	0.625	3.000	2.870
6 x 4	0.870	4.000	3.834

## EG14W - TANK WELDING FERRULE



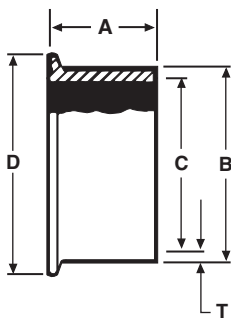
Size Tube OD	A	B	C	D
1	1.625	0.870	1.160	1.984
1 1/2	1.625	1.370	1.676	1.984
2	1.750	1.870	2.192	2.516
2 1/2	1.750	2.370	2.708	3.047
3	1.812	2.870	3.224	3.579
4	2.125	3.834	4.256	4.682
6	4.250	5.782	6.500	6.570

## EG14W-C6L - ASME CODED TANK FERRULE



Size Tube OD	A	B	C
1	1.625	1.160	0.870
1 1/2	1.625	1.676	1.370
2	1.750	2.192	1.870
2 1/2	1.750	2.708	2.370
3	1.812	3.224	2.870
4	2.125	4.256	3.834
6	4.250	6.500	5.782

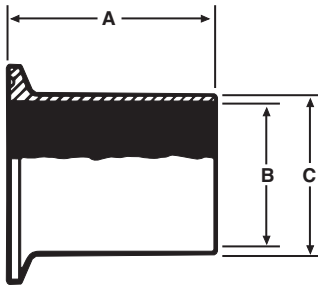
## EG14WSL-C6L - ASME CODED TANK FERRULE LONG



Size Tube OD	A	B	C	D	Nom. Wall (T)
1	2.500	1.160	0.870	1.984	0.145
1 1/2	2.500	1.676	1.370	1.984	0.153
2	2.500	2.192	1.870	2.516	0.161
2 1/2	3.500	2.708	2.370	3.047	0.169
3	4.500	3.224	2.870	3.579	0.177
4	4.500	4.256	3.834	4.682	0.211
6	6.250	6.500	5.782	6.570	0.359

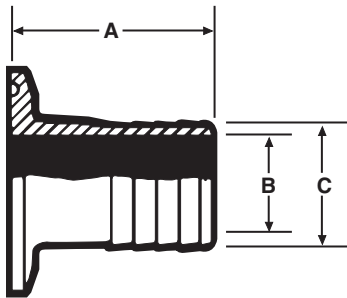


## EG14WL - TANK WELDING FERRULE



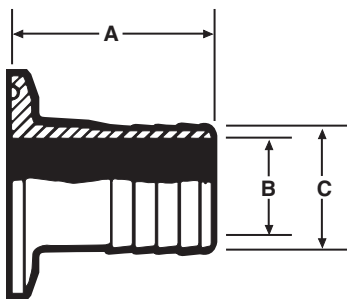
Size Tube OD	A	B	C
1	3.000	0.870	1.000
1 1/2	3.000	1.370	1.500
2	3.000	1.870	2.000
2 1/2	3.000	2.370	2.500
3	4.000	2.870	3.000
4	4.000	3.834	4.000
6	6.000	5.782	6.000
8	6.000	7.782	8.000
10	6.000	9.730	10.000
12	6.000	11.730	12.000

## EG14RT - RUBBER HOSE ADAPTER



Size Tube OD	A	B	C
1/2	2.000	0.370	0.500
3/4	2.000	0.620	0.750
1	1.687	0.870	1.000
1 1/4	Call VNE	1.185	1.250
1 1/2	1.687	1.370	1.500
2	2.312	1.870	2.000
2 1/2	2.312	2.370	2.500
3	3.093	2.870	3.000
4	3.406	3.834	4.000
6	8.875	5.782	6.000

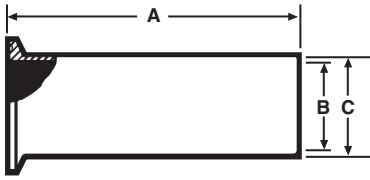
## EG14RT - RUBBER HOSE ADAPTER REDUCER (T316L)



Size Tube OD	A	B	C
1 x 1/2	2.000	0.370	0.500
1 x 3/4	2.000	0.620	0.750
1 1/2 x 1 1/4	3.500	1.120	1.250
2 x 1	3.500	0.870	1.000
2 x 1 1/2	3.500	1.370	1.500
2 1/2 x 2	3.500	1.870	2.000
3 x 2	3.500	1.870	2.000
3 x 2 1/2	3.500	2.370	2.500
4 x 2 1/2	3.625	2.370	2.500
4 x 3	3.625	3.870	3.000

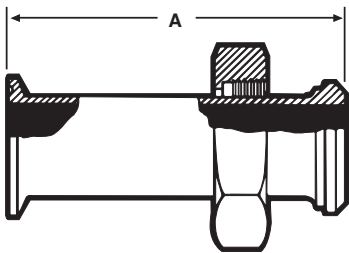
# Clamp Fittings

## EG14HT - TYGON HOSE ADAPTER



Size Tube OD	A	B	C
1	4.500	0.870	1.000
1 1/2	4.500	1.370	1.500
2	4.500	1.870	2.000
2 1/2	4.500	2.370	2.500
3	4.500	2.870	3.000
4	4.625	3.834	4.000

## EG17PR - ADAPTER



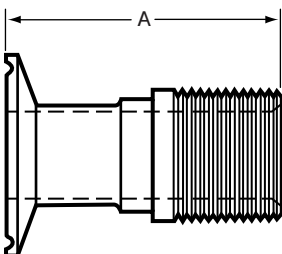
Size Tube OD	A
1	2.500
1 1/2	2.625
2	2.625
2 1/2	2.875
3	2.875
4	2.875

## EG17TR - ADAPTER



Size Tube OD	A
1	1.187
1 1/2	1.187
2	1.218
2 1/2	1.343
3	1.437
4	2.125

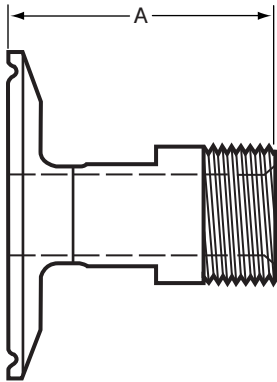
## EG21 - MALE ADAPTER (N.P.T. Pipe Threads)



Size Tube OD	A
1	2.875
1 1/4	2.875
1 1/2	2.875
2	2.937
2 1/2	3.437
3	3.625
4	3.812
6	4.875

1 inch through 4 inch are supplied with wrench flats

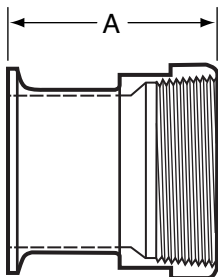
## EG21-6L - MALE ADAPTER REDUCING (N.P.T. Pipe Threads) (T316L)



Size Tube OD	A
3/4 x 1/2	See MaxPure Catalog - TEG21
1 x 1/2	2.125
1 x 3/4	2.125
1 1/2 x 1/2	2.125
1 1/2 x 3/4	2.125
1 1/2 x 1 1/4	2.250
2 x 1	2.250
2 x 1 1/4	2.250
2 x 1 1/2	2.250
2 1/2 x 1 1/2	2.250
2 1/2 x 2	2.312
3 x 1 1/2	2.250
3 x 2	2.312
3 x 2 1/2	2.812
4 x 2	2.312
4 x 2 1/2	2.812
4 x 3	3.000
6 x 4	3.062

Sanitary Clamp end dimension listed first.

## EG22 - FEMALE ADAPTER (N.P.T. Pipe Threads)

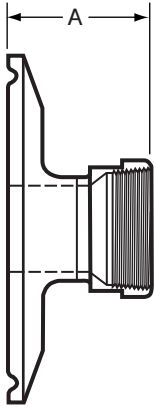


Size Tube OD	A
1	2.250
1 1/4	2.562
1 1/2	2.562
2	2.562
2 1/2	2.750
3	2.937
4	3.125

1 inch through 4 inch are supplied with wrench flats



## EG22 - FEMALE ADAPTER REDUCING (N.P.T. Pipe Threads) (T316L)



Size Tube OD	A
3/4 x 1/2	See MaxPure Catalog - TEG22
1 x 1/2	1.625
1 x 3/4	1.625
1 1/2 x 1/2	1.625
1 1/2 x 3/4	1.625
1 1/2 x 1 1/4	2.560
2 x 1	1.625
2 x 1 1/4	1.927
2 x 1 1/2	1.937
2 1/2 x 1 1/2	1.937
2 1/2 x 2	1.937
3 x 1 1/2	1.937
3 x 2	1.937
3 x 2 1/2	2.125
4 x 2	2.062
4 x 2 1/2	2.250
4 x 3	2.437

Sanitary Clamp end dimension listed first.

## EG16A / LA-EG16A - SOLID END CAP



Size Tube OD	A	B
[LA] 1/2 & 3/4	0.992	0.200
[LA] 1 & 1 1/2	1.984	0.250
[LA] 2	2.516	0.250
[LA] 2 1/2	3.047	0.250
[LA] 3	3.579	0.25
[LA] 4	4.682	0.312
[LA] 5	5.692	0.385
[LA] 6	6.570	0.437
[LA] 8	8.570	0.437
10	10.570	0.500
12	12.570	0.500

1 1/2" caps are used on both 1" and 1 1/2" lines.

3/4" caps are used on both 1/2" & 3/4" lines.

## EG23B-6L - CLAMP THERMOMETER CAPS (T316L)



Size Tube OD	A	B
*1	1.984	0.625
1 1/2	1.984	0.625
2	2.516	0.625
2 1/2	3.047	0.625
3	3.579	0.625
4	4.682	0.625

\*STD - 1/2 FNPT. All others 3/4" FNPT

Note: Other tap sizes are available.

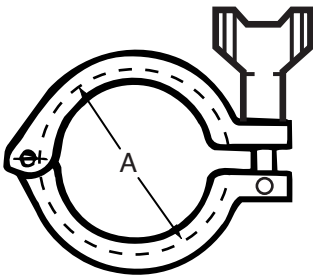
## GASKETS



Gasket Materials	Part Number	Flange Type
Buna N	EG40	EG40F
EPDM	EG40E	EG40FE
Teflon	EG40T	
Viton®	EG40V	EG40FV
Silicone	EG40S	EG40FS
TEF-Steel	EG40TS	
<b>Envelope Type</b>		
Teflon with EPDM Filler	EG40GR	
Teflon with Viton Filler	EG40GRV	

Available in 1/2" to 12" sizes.

## 13MHM - HEAVY DUTY CLAMP

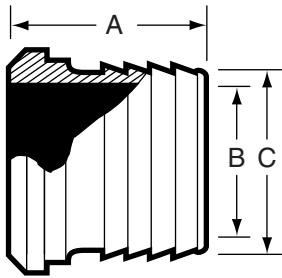


Size Tube OD	A
3/4	1.125
1 1/2	2.122
2	2.654
2 1/2	3.185
3	3.717
4	4.820
5	5.817
6	6.695
8	8.695
10	10.695
12*	12.695

Wing Nuts tightened to 25 in-lbs of torque

\*12" Clamp is a two piece design using two wingnuts and no hinge.

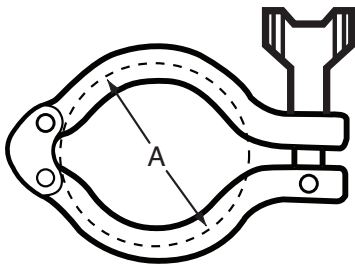
## 13MHMH-H - HEAVY DUTY CLAMP (Wing Nut With Hole)



Size Tube OD	A
3/4	1.125
1 & 1 1/2	2.122
2	2.654
2 1/2	3.185
3	3.717
4	4.820
5	5.817
6	6.695
8	8.695
10	10.695
12	12.695

Wing Nuts tightened to 25 in-lbs of torque

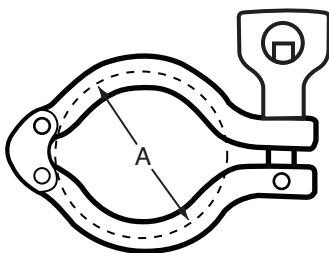
## 13MHMD - DOUBLE HINGED HEAVY DUTY CLAMP



Size Tube OD	A
1 1/2	2.122
2	2.654
2 1/2	3.185
3	3.717
4	4.820

Wing Nuts tightened to 25 in-lbs of torque

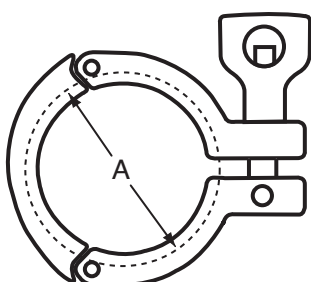
## 13MHMD - H - DOUBLE HINGED HEAVY DUTY CLAMP (Wing Nut With Hole)



Size Tube OD	A
1 1/2	2.122
2	2.654
2 1/2	3.185
3	3.717
4	4.820

Wing Nuts tightened to 25 in-lbs of torque

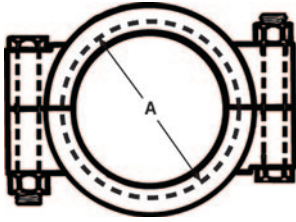
## 13MHHS - THREE PIECE HEAVY DUTY CLAMP



Size Tube OD	A
1 1/2	2.122
2	2.654
2 1/2	3.185
3	3.717
4	4.820

Wing Nuts tightened to 25 in-lbs of torque

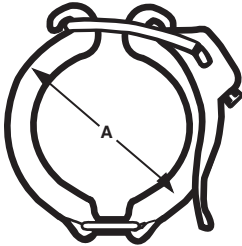
## 13MHP - HIGH PRESSURE CLAMP



Size Tube OD	A
3/4	1.125
1 1/2	2.046
2	2.578
2 1/2	3.110
3	3.640
4	4.744
6	6.632

13MHP Style nuts tightened to 20 ft-lbs of torque for 1 1/2" - 6" sizes.  
4 ft-lbs of torque for 3/4" size.

## EG13 - HINGED CLAMP - (Light Duty)



Size Tube OD	A
1 1/2	2.142
2	2.653
2 1/2	3.205
3	3.740
4	4.803

\* Not recommended for use with Teflon gaskets

## \*PSI SERVICE RATINGS FOR SANITARY STAINLESS STEEL CLAMPS

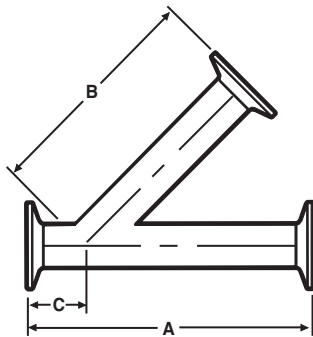
Size Tube OD	13MHM / 13MHM - H		13MHMD / 13MHMD - H	
	@70°F	@250°F	@70°F	@250°F
3/4"	1500	1200		
1 1/2"	500	250	500	250
2"	450	250	450	250
2 1/2"	400	200	400	200
3"	350	150	350	150
4"	200	125	200	125
5"	175	100		
6"	150	75		
8"	100	50		
10"	40	30		
12"	30	25		

**\*PSI SERVICE RATINGS FOR SANITARY STAINLESS STEEL CLAMPS**

Size Tube OD	13MHHS		13MHP		EG13	
	@70°F	@250°F	@70°F	@250°F	@70°F	@250°F
3/4"			1500	1200		
1 1/2"	600	300	1500	1200	150	125
2"	550	275	1000	800	150	125
2 1/2"	450	225	1000	800	150	125
3"	350	160	1000	800	150	125
4"	250	150	1000	800	150	125
5"						
6"			300	200		
8"						
10"						
12"						

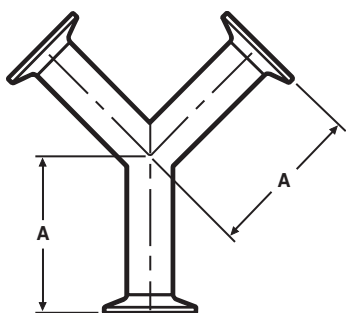
\*Service ratings are based upon hydrostatic tests using Standard Molded Buna-N gasket material with proper expansion of ferules, joint assembly, and the absence of shock pressure. All ratings systems are dependent upon related components in the system and proper installation.

**EG28A - 45° CLAMP LATERAL**



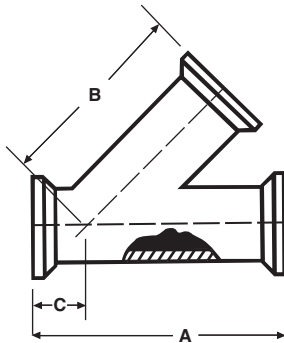
Size Tube OD	A	B	C
1	7.000	5.500	1.500
1 1/2	8.375	6.687	1.687
2	9.625	7.625	2.125
2 1/2	11.125	9.000	2.000
3	11.750	9.375	2.375
4	14.062	11.375	2.687
6	18.875	15.375	4.375

**EG28B - CLAMP TRUE Y**



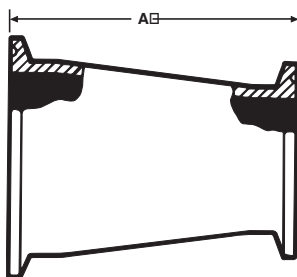
Size Tube OD	A
1	3.500
1 1/2	3.500
2	4.500
2 1/2	5.500
3	6.500
4	8.625
6	8.875

### EG28RA - 45° CLAMP REDUCING LATERAL



Size Tube OD	A	B	C
1 1/2 x 1	8.375	5.062	1.375
2 x 1	9.625	5.500	1.625
2 x 1 1/2	9.625	5.500	1.625
2 1/2 x 1	11.125	6.875	2.125
2 1/2 x 1 1/2	11.125	6.875	2.125
2 1/2 x 2	11.125	6.875	2.125
3 x 1	11.750	8.250	2.500
3 x 1 1/2	11.750	8.250	2.500
3 x 2	11.750	8.250	2.500
3 x 2 1/2	11.750	8.250	2.500
4 x 1	14.062	10.000	3.000
4 x 1 1/2	14.062	10.000	3.000
4 x 2	14.062	10.000	3.000
4 x 2 1/2	14.062	10.000	3.000
4 x 3	14.062	10.000	3.00

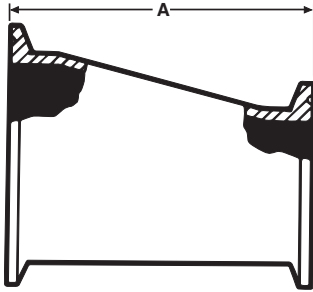
### EG31CC / LA-EG31CC - CONCENTRIC REDUCER



Size Tube OD	A
[LA] 3/4 x 1/2	2.000
[LA] 1 x 1/2	2.000
[LA] 1 x 3/4	2.000
[LA] 1 1/2 x 1/2	3.000
[LA] 1 1/2 x 3/4	3.000
[LA] 1 1/2 x 1	3.000
1 1/2 x 1 1/4	2.000
[LA] 2 x 1	5.000
2 x 1 1/4	2.000
[LA] 2 x 1 1/2	3.000
[LA] 2 1/2 x 1	7.000
[LA] 2 1/2 x 1 1/2	5.000
[LA] 2 1/2 x 2	3.000
[LA] 3 x 1 1/2	7.000
[LA] 3 x 2	5.000
[LA] 3 x 2 1/2	3.000
[LA ONLY] 4 X 1 1/2	11.125
[LA] 4 x 2	9.125
[LA] 4 x 2 1/2	7.125
[LA] 4 x 3	5.125
6 x 3	6.875
6 x 4	7.000

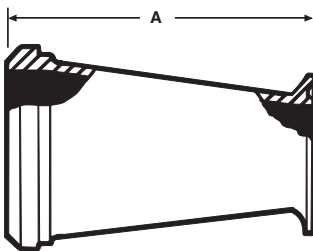


## EG32CC / LA-EG32CC - ECCENTRIC REDUCER



	Size Tube OD	A
[LA]	3/4 x 1/2	2.000
[LA]	1 x 1/2	3.000
[LA]	1 x 3/4	2.000
[LA]	1 1/2 x 1/2	5.000
[LA]	1 1/2 x 3/4	4.000
[LA]	1 1/2 x 1	3.000
	1 1/2 x 1 1/4	2.000
[LA]	2 x 1	5.000
	2 x 1 1/4	2.000
[LA]	2 x 1 1/2	3.000
[LA]	2 1/2 x 1	7.000
[LA]	2 1/2 x 1 1/2	5.000
[LA]	2 1/2 x 2	3.000
	3 x 1	9.000
[LA]	3 x 1 1/2	7.000
[LA]	3 x 2	5.000
[LA]	3 x 2 1/2	3.000
[LA]	4 x 2	9.125
[LA]	4 x 2 1/2	7.125
[LA]	4 x 3	5.125
	6 x 3	6.875
	6 x 4	7.000

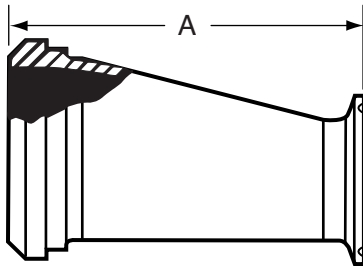
## EG31PC - ADAPTER REDUCER (Concentric)



	Size Tube OD	A
	*1 1/2 x 1	3.187
	2 x 1	5.218
	2 x 1 1/2	3.218
	2 1/2 x 1 1/2	5.343
	2 1/2 x 2	3.343
	3 x 2	5.437
	3 x 2 1/2	3.437
	4 x 2 1/2	7.500
	4 x 3	5.500

\*Hex nut furnished

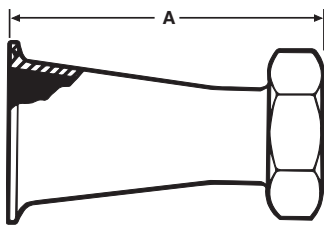
## EG32PC - ADAPTER REDUCER (Eccentric)



Size Tube OD	A
*1 1/2 x 1	3.187
2 x 1	5.218
2 x 1 1/2	3.218
2 1/2 x 1 1/2	5.343
2 1/2 x 2	3.343
3 x 2	5.437
3 x 2 1/2	3.437
4 x 2 1/2	7.500
4 x 3	5.500

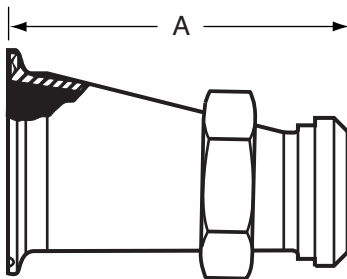
\*Hex nut furnished

## EG31CP - ADAPTER REDUCER (Concentric)



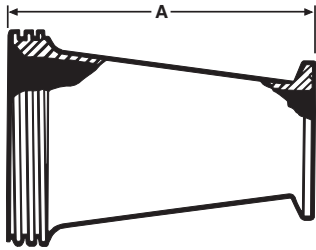
Size Tube OD	A
1 1/2 x 1	3.875
2 x 1	5.875
2 x 1 1/2	4.000
2 1/2 x 1 1/2	6.000
2 1/2 x 2	4.000
3 x 2	6.000
3 x 2 1/2	4.250
4 x 2 1/2	8.378
4 x 3	6.378

## EG32CP - ADAPTER REDUCER (Eccentric)



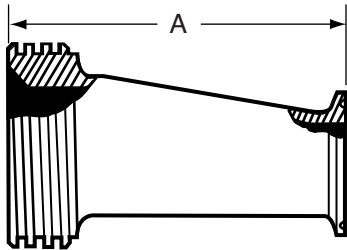
Size Tube OD	A
1 1/2 x 1	3.875
2 x 1	5.875
2 x 1 1/2	4.000
2 1/2 x 1 1/2	6.000
2 1/2 x 2	4.000
3 x 2	6.000
3 x 2 1/2	4.250
4 x 2 1/2	8.378
4 x 3	6.378

## EG31TC - ADAPTER REDUCER (Concentric)



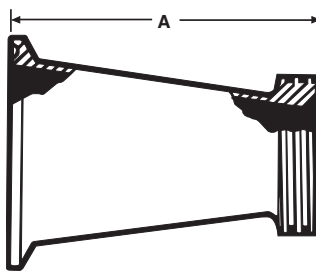
Size Tube OD	A
1 1/2 x 1	3.187
2 x 1	5.218
2 x 1 1/2	3.218
2 1/2 x 1 1/2	5.343
2 1/2 x 2	3.343
3 x 2	5.437
3 x 2 1/2	3.437
4 x 2 1/2	7.500
4 x 3	5.500

## EG32TC - ADAPTER REDUCER (Eccentric)



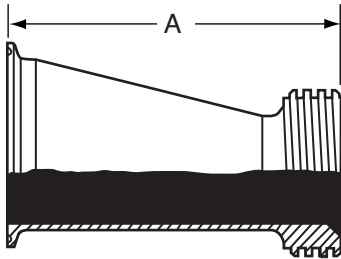
Size Tube OD	A
1 1/2 x 1	3.187
2 x 1	5.218
2 x 1 1/2	3.218
2 1/2 x 1 1/2	5.343
2 1/2 x 2	3.343
3 x 2	5.437
3 x 2 1/2	3.437
4 x 2 1/2	7.500
4 x 3	5.500

## EG31CT - ADAPTER REDUCER (Concentric)



Size Tube OD	A
1 1/2 x 1	3.187
2 x 1	5.187
2 x 1 1/2	3.187
2 1/2 x 1 1/2	5.187
2 1/2 x 2	3.218
3 x 1 1/2	7.187
3 x 2	5.218
3 x 2 1/2	3.343
4 x 2	9.343
4 x 2 1/2	7.468
4 x 3	5.562

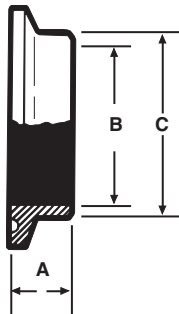
## EG32CT - ADAPTER REDUCER (Eccentric)



Size Tube OD	A
1 1/2 x 1	3.187
2 x 1	5.187
2 x 1 1/2	3.187
2 1/2 x 1 1/2	5.187
2 1/2 x 2	3.218
3 x 1 1/2	7.187
3 x 2	5.218
3 x 2 1/2	3.343
4 x 2	9.343
4 x 2 1/2	7.468
4 x 3	5.562

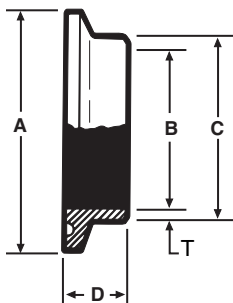
## CLAMP FITTINGS SCHEDULE 5 & 10

### EG2CS-5-6L - FERRULE



Size Pipe	A	B	C	Nom. Wall
1	0.500	1.185	1.315	0.065
1 1/2	0.500	1.770	1.900	0.065
2	0.500	2.245	2.375	0.065
2 1/2	0.500	2.709	2.875	0.083
3	0.500	3.334	3.500	0.083
4	0.625	4.334	4.500	0.083

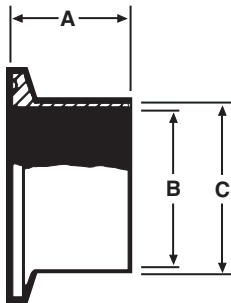
### EG2CS-10-6L - FERRULE



Size Pipe	A	B	C	D	Nom. Wall
1/2	1.984	0.674	0.840	0.500	0.083
3/4	1.984	0.884	1.050	0.500	0.083
1	1.984	1.097	1.315	0.500	0.109
1 1/2	2.516	1.682	1.900	0.500	0.109
2	3.047	2.157	2.375	0.500	0.109
2 1/2	3.579	2.635	2.875	0.500	0.120
3	4.125	3.260	3.500	0.500	0.120
4	5.125	4.260	4.500	0.625	0.120

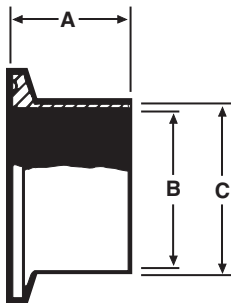
# Clamp Fittings Schedule 5 & 10

## EG14AM7-5-6L - FERRULE



Size Pipe	A	B	C	Nom. Wall
1	1.125	1.185	1.315	0.065
1 1/2	1.125	1.770	1.900	0.065
2	1.125	2.245	2.375	0.065
2 1/2	1.125	2.709	2.875	0.083
3	1.125	3.334	3.500	0.083
4	1.125	4.334	4.500	0.083

## EG14AM7-10-6L - FERRULE



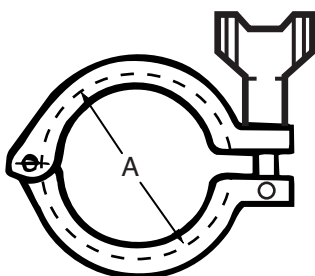
Size Pipe	A	B	C	Nom. Wall
1	1.125	1.097	1.315	0.109
1 1/2	1.125	1.682	1.900	0.109
2	1.125	2.157	2.375	0.109
2 1/2	1.125	2.635	2.875	0.120
3	1.125	3.260	3.500	0.120
4	1.125	4.260	4.500	0.120

## EG16A-5-6L - CAP



Size Pipe	A	B
1	1.984	0.250
1 1/2	2.516	0.250
2	3.047	0.250
2 1/2	3.579	0.250
3	4.125	0.250
4	5.125	0.250

## 13MHM-5 - CLAMP



Size Pipe	A
1	2.122
1 1/2	2.654
2	3.185
2 1/2	3.717
3	4.250
4	5.250
6	6.772

# Clamp Fittings Schedule 5 & 10

## \*PSI SERVICE RATINGS FOR SANITARY STAINLESS STEEL CLAMPS

Pipe Size	13MHHM	
	@70°F	@250°F
1"	500	250
1 1/2"	450	250
2"	400	200
2 1/2"	350	150
3"	250	135
4"	175	100

## GASKETS



Gasket Materials	Part Number
Buna N	EG40-5-SIZE
Teflon	EG40T-5-SIZE
Viton	EG40V-5-SIZE
Silicone	EG40S-5-SIZE
EPDM	EG40E-5-SIZE

Available in 1" to 4" sizes.





### WELD FITTINGS....

Weld Fittings are used on permanent installations where process piping and equipment can be cleaned in place (CIP) and removal from the system is not required. Weld Fittings are offered in nominal tube sizes 1/2" through 8" in T304 and T316L materials. Uniform wall thickness for 1/2" through 3" sizes measure .065 (16 ga). In 4" size, wall thickness measures .083 (14 ga), 6" and 8" .109 (12 ga).

VNE offers Polished ID and OD Fittings for immediate shipment. Other polished combinations may be ordered. Our Weld Fittings meet all 3A requirements.

The "LA" designated product offering is available as a cost-effective alternative to our existing line of fittings and meets the industry expectations on high quality that you have come to expect from VNE. Fittings listed as [LA] are available in both our traditional offering and LA designated offering. Example: E2S-6L1.5 (Traditional offering on 3A weld by weld 316L stainless steel 90° elbow with tangents) and LA-E2S-6L1.5 (LA alternative on 3A weld by weld 316L stainless steel 90° elbow with tangents). Fittings listed as [LA ONLY] are products exclusive to the LA fitting product category.

### WELD FITTING SPECIFICATIONS....

**Size Range:** 1/2" OD through 8" OD

**Materials:** T304  
T316L

**Finish:** No. 7 - ID & OD  
No. 5 - OD only  
No. 3 - ID only  
No. 1 - unpolished

### ORDERING SPECIFICATIONS....

**Specify:**

- Quantity
- Product description or Part No.
- Size
- Material Type
- Polish Requirements

### LIMITED WARRANTY....

VNE Corporation products are warranted to be free from defects in material and workmanship for a period of one year from the date of shipment. Any product that proves to be defective shall be repaired or replaced at the option of VNE, providing it has been used as recommended and in strict accordance with recognized piping practices, and that has not been subject to extraordinary service, such as encountered under severe corrosive or abrasive conditions.

VNE makes no warranties, express or implied, other than those listed above.

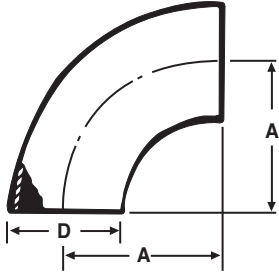
VNE shall not be liable for any consequential, indirect, incidental or contingent damages.



## WELD FITTINGS

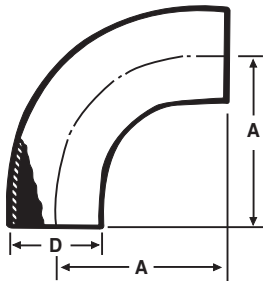
VNE	ALFA LAVAL	WAUKESHA / SPX	BRADFORD	STEEL & O'BRIEN
E2S	L2S	2CW	B2S	L2S
E2C	L2CM	2CKW	B2CM	L2CM
E2T	L2C	2TW	B2T	L2C
E2F	L2F	2FW	B2FP	L2F
E2KS	L2KS	2KW	B2KS	L2KS
E2KC	L2KM	2KKW	B2KM	L2KM
E2KT	L2K	2KT	B2K	L2K
E2KP	L2P	2KP	B2P	L2P
E2WU	L2WU	2WU	B2WUL	2WU
E7WWW	L7WWW	7W	B7WWW	7WWW
E7WWC	L7WWM	7WWK	B7WWM	7WWM
E7WWT	L7WWT	7WWT	B7WWT	----
E7WCW	L7WMW	7WKW	B7WMW	7WMW
E7WTW	L7WTW	7WTW	B7WTW	----
E7WCC	L7WMM	7WKK	B7WMM	7WMM
E7WTT	L7WTT	7WTT	B7WTT	----
E7CCW	L7MMW	7KKW	B7MMW	7MMW
E7TTW	L7TTW	7TTW	B7TTW	----
E7RWWW	L7RWWW	7WR	B7RWWW	7WR
E9WWWWW	L9WWWWW	9W	B9WWWWW	9WWWWW
E31WW	L31	31W	B31W	31W
E32WW	L32	32W	B32W	32W
E28WA	L28WA	28WA	B28WA	28WA
E28WB	L28WB	28WB	B28W	28WB
E2WK			B2WK	2WK

### 2WCL / LA-2WCL - 90° ELBOW SHORT TANGENT



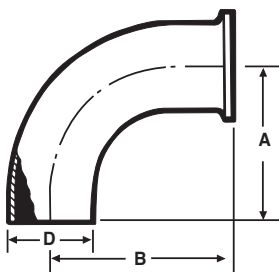
	Size Tube OD	A	D	Nom. Wall
[LA]	1	1.500	1.000	0.065
[LA]	1 1/4	1.875	1.250	0.065
[LA]	1 1/2	2.250	1.500	0.065
[LA]	2	3.000	2.000	0.065
[LA]	2 1/2	3.750	2.500	0.065
[LA]	3	4.500	3.000	0.065
[LA]	4	6.000	4.000	0.083
	6	9.000	6.000	0.109
	8	12.000	8.000	0.109

### E2S / LA-E2S - 90° ELBOW



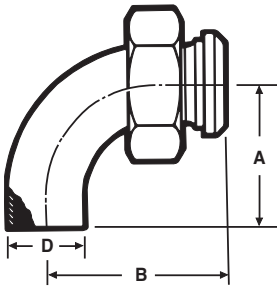
	Size Tube OD	A	D	Nom. Wall
[LA]	1	2.062	1.000	0.065
[LA]	1 1/2	2.937	1.500	0.065
[LA]	2	4.062	2.000	0.065
[LA]	2 1/2	5.187	2.500	0.065
[LA]	3	6.312	3.000	0.065
[LA]	4	8.312	4.000	0.083

### E2C / LA-E2C - 90° ELBOW



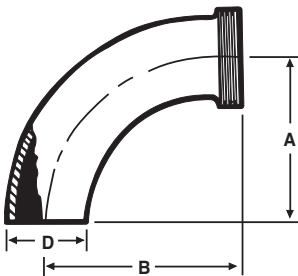
	Size Tube OD	A	B	D	Nom. Wall
[LA]	1	2.062	2.562	1.000	0.065
[LA]	1 1/2	2.935	3.437	1.500	0.065
[LA]	2	4.062	4.562	2.000	0.065
[LA]	2 1/2	5.187	5.687	2.500	0.065
[LA]	3	6.312	6.812	3.000	0.065
[LA]	4	8.312	8.937	4.000	0.083
[LA]	6	9.000	9.875	6.000	0.109

### E2F - 90° ELBOW



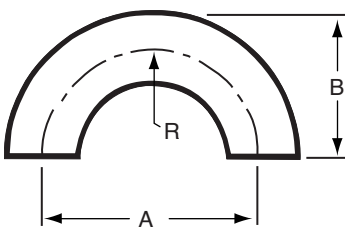
Size Tube OD	A	B	D	Nom. Wall
1	2.062	2.750	1.000	0.065
1 1/2	2.937	3.656	1.500	0.065
2	4.062	4.781	2.000	0.065
2 1/2	5.187	6.031	2.500	0.065
3	6.937	7.218	3.000	0.065
4	8.937	9.531	4.000	0.083

### E2T - 90° ELBOW



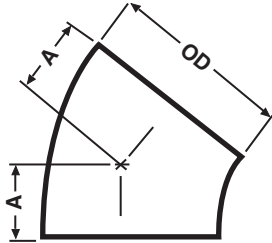
Size Tube OD	A	B	D	Nom. Wall
1	2.062	2.750	1.000	0.065
1 1/2	2.937	3.656	1.500	0.065
2	4.062	4.781	2.000	0.065
2 1/2	5.187	6.031	2.500	0.065
3	6.937	7.218	3.000	0.065
4	8.937	9.531	4.000	0.083

### E2WU - 180° U BEND



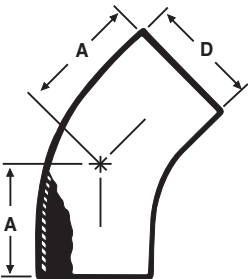
Size Tube OD	A	B	C	R	Nom. Wall
1/2	1.500	1.000	0.500	0.750	0.065
3/4	2.250	1.500	0.750	1.125	0.065
1	3.000	2.000	1.000	1.500	0.065
1 1/4	3.750	2.500	1.250	1.875	0.065
1 1/2	4.500	3.000	1.500	2.250	0.065
2	6.000	4.000	2.000	3.000	0.065
2 1/2	7.500	5.000	2.500	3.750	0.065
3	9.000	6.000	3.000	4.500	0.065
4	12.000	8.000	4.000	6.000	0.083
6	18.000	12.000	6.000	9.000	0.109

### E2WK / LA-E2WK - 45° ELBOW SHORT TANGENT



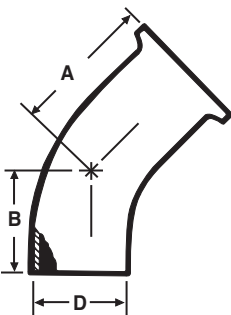
	Size Tube OD	A	Nom. Wal
[LA]	1	0.625	0.065
[LA]	1 1/4	0.781	0.065
[LA]	1 1/2	0.937	0.065
[LA]	2	1.250	0.065
[LA]	2 1/2	1.562	0.065
[LA]	3	1.875	0.065
[LA]	4	2.500	0.083
[LA]	6	3.750	0.109
[LA]	8	5.000	0.109

### E2KS / LA-E2KS - 45° ELBOW



	Size Tube OD	A	D	Nom. Wall
[LA]	1	1.187	1.000	0.065
[LA]	1 1/2	1.625	1.500	0.065
[LA]	2	2.312	2.000	0.065
[LA]	2 1/2	3.000	2.500	0.065
[LA]	3	3.687	3.000	0.065
[LA]	4	4.812	4.000	0.083

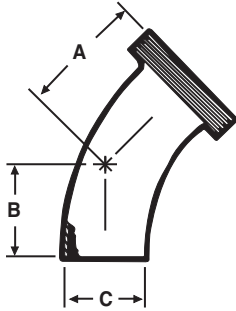
### E2KC - 45° ELBOW



	Size Tube OD	A	B	D	Nom. Wall
	1	1.687	1.187	1.000	0.065
	1 1/2	2.125	1.625	1.500	0.065
	2	2.812	2.312	2.000	0.065
	2 1/2	3.500	3.000	2.500	0.065
	3	4.187	3.687	3.000	0.065
	4	5.437	4.812	4.000	0.083
	6	4.625	3.750	6.000	0.109

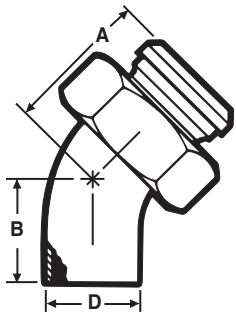


### E2KT - 45° ELBOW



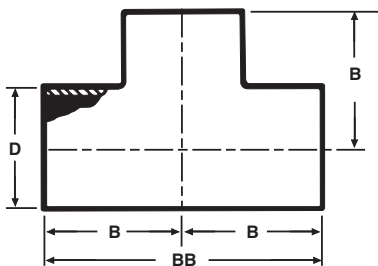
Size Tube OD	A	B	C	Nom. Wall
1	1.875	1.187	1.000	0.065
1 1/2	2.343	1.625	1.500	0.065
2	3.031	2.312	2.000	0.065
2 1/2	3.843	3.000	2.500	0.065
3	4.593	3.687	3.000	0.065
4	6.031	4.812	4.000	0.083

### E2KP - 45° ELBOW



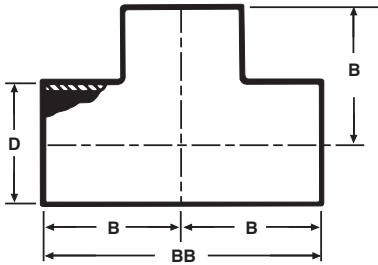
Size Tube OD	A	B	D	Nom. Wall
1	1.875	1.187	1.000	0.065
1 1/2	2.343	1.625	1.500	0.065
2	3.031	2.312	2.000	0.065
2 1/2	3.843	3.000	2.500	0.065
3	4.593	3.687	3.000	0.065
4	6.031	4.812	4.000	0.083

### E7WWW / LA-E7WWW - TEE



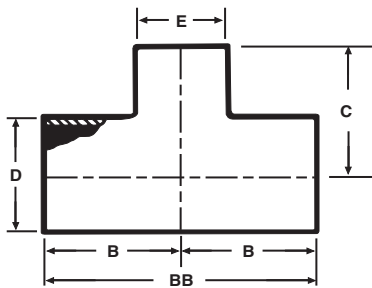
Size Tube OD	B	BB	D	Nom. Wall
[LA] 1	1.125	2.250	1.000	0.065
[LA] 1 1/4	2.250	3.312	1.250	0.065
[LA] 1 1/2	1.656	3.312	1.500	0.065
[LA] 2	2.062	4.125	2.000	0.065
[LA] 2 1/2	2.343	4.687	2.500	0.065
[LA] 3	2.593	5.187	3.000	0.065
[LA] 4	3.437	6.875	4.000	0.083
6	5.625	11.250	6.000	0.109
8	7.000	14.000	8.000	0.109

### LA-E7W - LONG TEE - ONLY AVAILABLE IN LA



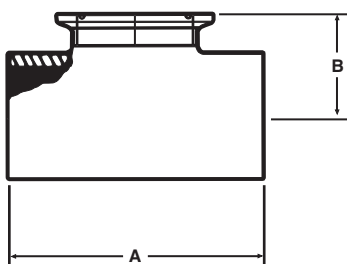
Size Tube OD	B	BB	D	Nom. Wall
1/2	1.875	3.750	0.500	0.065
3/4	2.000	4.000	0.750	0.065
1	1.875	3.750	1.000	0.065
1 1/2	2.250	4.500	1.500	0.065
2	3.000	6.000	2.000	0.065
2 1/2	3.000	6.000	2.500	0.065
3	3.250	6.500	3.000	0.065
4	3.875	7.750	4.000	0.083

### E7RWWW / LA-E7RWWW - REDUCING TEE



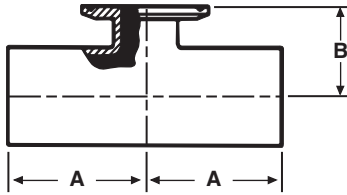
Size Tube OD	B	BB	C	Nom. Wall
[LA] 1 1/2 x 1	1.650	3.312	1.375	0.065
[LA] 2 x 1	2.060	4.125	1.625	0.065
[LA] 2 x 1 1/2	2.060	4.125	1.906	0.065
[LA] 2 1/2 x 1	2.340	4.687	1.875	0.065
[LA] 2 1/2 x 1 1/2	2.340	4.687	2.150	0.065
[LA] 2 1/2 x 2	2.340	4.687	2.312	0.065
[LA] 3 x 1	2.590	5.187	2.125	0.065
[LA] 3 x 1 1/2	2.590	5.187	2.400	0.065
[LA] 3 x 2	2.590	5.187	2.562	0.065
[LA] 3 X 2 1/2	2.590	5.187	2.590	0.065
[LA] 4 x 1 1/2	3.430	6.875	4.906	0.083 x 0.065
[LA] 4 x 2	3.430	6.875	3.090	0.083 x 0.065
[LA] 4 x 2 1/2	3.430	6.875	3.090	0.083 x 0.065
[LA] 4 x 3	3.590	6.875	3.090	0.083 x 0.065
[LA] 6 x 2	5.625	11.250	5.625	0.109 x 0.065
[LA] 6 x 3	5.625	11.250	5.625	0.109 x 0.065
6 x 4	5.625	11.250	5.625	0.109 x 0.083

### E7WWCS - SHORT CLAMP BRANCH TEE - See TE7WWCS



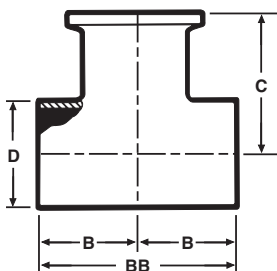
Size Tube OD	A	B	Nom. Wall
1	4.250	1.125	.065
1 1/2	4.750	1.375	.065
2	5.750	1.625	.065
2 1/2	6.250	1.875	.065
3	6.750	2.125	.065
4	8.250	2.750	.083
6	11.250	4.625	.109

### E7RWWCS - REDUCING SHORT CLAMP BRANCH TEE



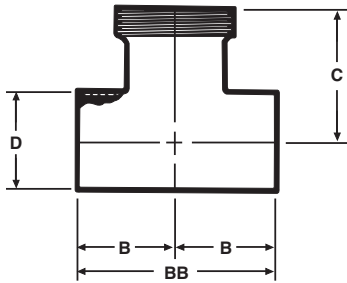
Size Tube OD	A	B	Nom. Wall
3/4 x 1/2	2.000	1.000	0.065
1 x 1/2	2.120	1.120	0.065
1 x 3/4	2.120	1.120	0.065
1 1/2 x 1/2	2.370	1.370	0.065
1 1/2 x 3/4	2.370	1.370	0.065
1 1/2 x 1	2.370	1.370	0.065
2 x 1/2	2.870	1.620	0.065
2 x 3/4	2.870	1.620	0.065
2 x 1	2.870	1.620	0.065
2 x 1 1/2	2.870	1.620	0.065
2 1/2 x 1/2	3.120	1.870	0.065
2 1/2 x 3/4	3.120	1.870	0.065
2 1/2 x 1	3.120	1.870	0.065
2 1/2 x 1 1/2	3.120	1.870	0.065
2 1/2 x 2	3.120	1.870	0.065
3 x 1/2	3.370	2.120	0.065
3 x 3/4	3.370	2.120	0.065
3 x 1	3.370	2.120	0.065
3 x 1 1/2	3.370	2.120	0.065
3 x 2	3.370	2.120	0.065
3 x 2 1/2	3.370	2.120	0.065
4 x 1/2	4.120	2.620	0.083
4 x 3/4	4.120	2.620	0.083
4 x 1	4.120	2.620	0.083
4 x 1 1/2	4.120	2.620	0.083
4 x 2	4.120	2.620	0.083
4 x 2 1/2	4.120	2.620	0.083
4 x 3	4.120	2.620	0.083
6 x 4	5.630	3.750	0.109

### E7WWC - TEE WELD X WELD X CLAMP



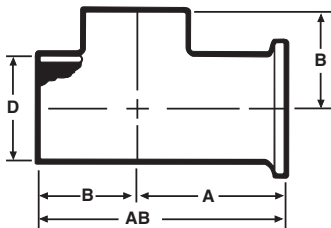
Size Tube OD	B	BB	C	D	Nom. Wall
1	1.125	2.250	1.625	1.000	0.065
1 1/2	1.656	3.312	2.156	1.500	0.065
2	2.062	4.125	2.562	2.000	0.065
2 1/2	2.343	4.687	2.843	2.500	0.065
3	2.593	5.187	3.093	3.000	0.065
4	3.625	7.250	4.656	4.000	0.083
6	5.625	11.250	6.500	6.000	0.109

### E7WWT - TEE WELD X WELD X THREAD



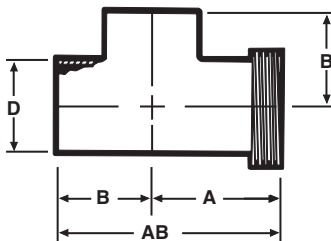
Size Tube OD	B	BB	C	D	Nom. Wall
1	1.125	2.250	1.812	1.000	0.065
1 1/2	1.656	3.312	2.375	1.500	0.065
2	2.062	4.125	2.781	2.000	0.065
2 1/2	2.343	4.687	3.187	2.500	0.065
3	2.593	5.187	3.500	3.000	0.065
4	3.625	7.250	4.656	4.000	0.083

### E7WCW - TEE WELD X CLAMP X WELD



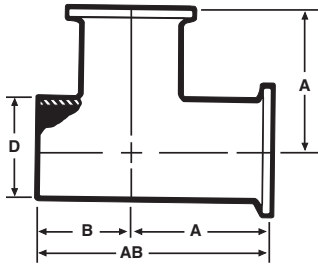
Size Tube OD	A	B	AB	D	Nom. Wall
1	1.625	1.125	2.750	1.000	0.065
1 1/2	2.156	1.656	3.812	1.500	0.065
2	2.562	2.062	4.625	2.000	0.065
2 1/2	2.843	2.343	5.187	2.500	0.065
3	3.093	2.593	5.687	3.000	0.065
4	4.250	3.625	7.875	4.000	0.083
6	6.500	5.625	12.125	6.000	0.109

### E7WTW - TEE THREADED ONE END - WELD X THREAD X WELD



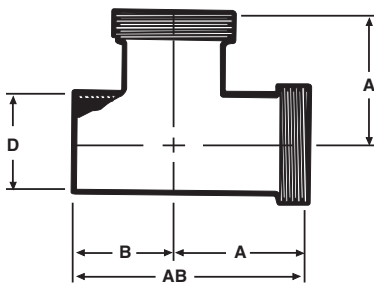
Size Tube OD	A	B	AB	D	Nom. Wall
1	1.812	1.125	2.937	1.000	0.065
1 1/2	2.375	1.656	4.031	1.500	0.065
2	2.781	2.062	4.843	2.000	0.065
2 1/2	3.187	2.343	5.531	2.500	0.065
3	3.500	2.593	6.093	3.000	0.065
4	4.656	3.625	8.281	4.000	0.083

### E7WCC - TEE WELD X CLAMP X CLAMP



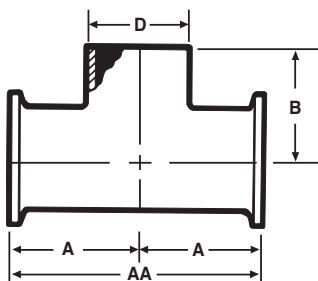
Size Tube OD	A	B	AB	D	Nom. Wall
1	1.625	1.125	2.750	1.000	0.065
1 1/2	2.156	1.656	3.812	1.500	0.065
2	2.562	2.062	4.625	2.000	0.065
2 1/2	2.843	2.343	5.187	2.500	0.065
3	3.093	2.593	5.687	3.000	0.065
4	4.250	3.625	7.875	4.000	0.083
6	6.500	5.625	12.125	6.000	0.109

### E7WTT - TEE WELD X THREAD X THREAD



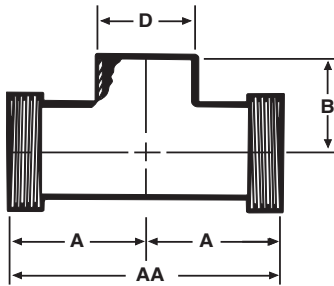
Size Tube OD	A	B	AB	D	Nom. Wall
1	1.812	1.125	2.937	1.000	0.065
1 1/2	2.375	1.656	4.031	1.500	0.065
2	2.781	2.062	4.843	2.000	0.065
2 1/2	3.187	2.343	5.531	2.500	0.065
3	3.500	2.593	6.093	3.000	0.065
4	4.656	3.625	8.281	4.000	0.083

### E7CCW - TEE CLAMP X CLAMP X WELD



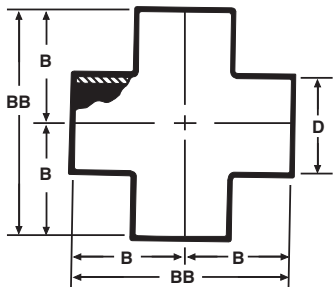
Size Tube OD	A	AA	B	D	Nom. Wall
1	1.625	3.250	1.125	1.000	0.065
1 1/2	2.562	4.312	1.656	1.500	0.065
2	2.562	5.125	2.062	2.000	0.065
2 1/2	2.843	5.687	2.343	2.500	0.065
3	3.093	6.187	2.593	3.000	0.065
4	4.250	8.500	3.625	4.000	0.083
6	6.500	13.000	5.625	6.000	0.109

### E7TTW - TEE THREAD X THREAD X WELD



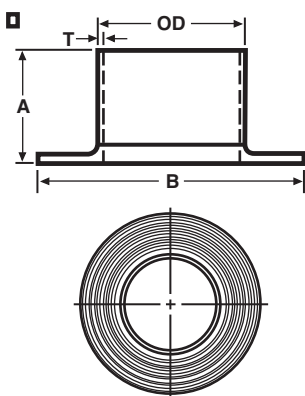
Size Tube OD	A	AA	B	D	Nom. Wall
1	1.812	3.625	1.125	1.000	0.065
1 1/2	2.375	4.750	1.656	1.500	0.065
2	2.781	5.562	2.062	2.000	0.065
2 1/2	3.187	6.375	2.343	2.500	0.065
3	3.500	7.000	2.593	3.000	0.065
4	4.656	9.312	3.625	4.000	0.083

### E9WWWW - CROSS / LA-E9WWWW - CROSS



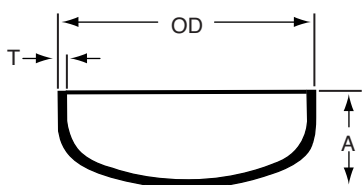
Size Tube OD	B	BB	D	Nom. Wall
[LA] 1	1.125	2.250	1.000	0.065
[LA] 1 1/2	1.656	3.312	1.500	0.065
[LA] 2	2.062	4.125	2.000	0.065
[LA] 2 1/2	2.343	4.687	2.500	0.065
[LA] 3	2.593	5.187	3.000	0.065
[LA] 4	3.437	6.875	4.000	0.083
6	5.625	11.250	6.000	0.109

### E14WA - TYPE A STUB END WITH GROOVES



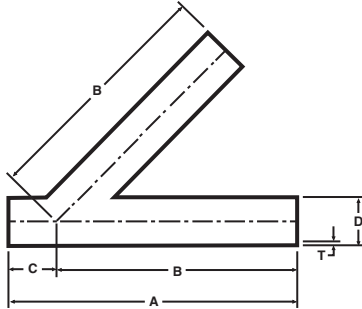
Size Tube OD	A	B	Nom. Wall ( T )
1/2	1.375	1.625	0.065
3/4	1.375	1.687	0.065
1	1.625	2.000	0.065
1 1/4	1.625	2.500	0.065
1 1/2	1.750	2.875	0.065
2	1.500	3.625	0.065
2 1/2	2.000	4.125	0.065
3	2.250	5.000	0.065
4	2.625	6.187	0.083
6	3.000	8.500	0.109

### E16W - WELD CAP



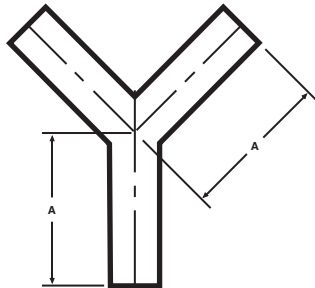
Size Tube OD	A	Nom. Wall ( T )
1	0.375	0.065
1 1/4	0.500	0.065
1 1/2	0.562	0.065
2	0.750	0.065
2 1/2	1.000	0.065
3	1.250	0.065
4	1.500	0.083
6	Contact VNE for dimensions	

### E28WA - 45° LATERAL



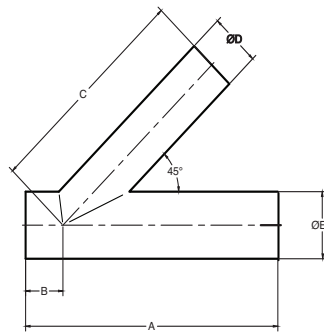
Size Tube OD	A	B	C	D	Nom. Wall ( T )
1	6.000	5.000	1.000	1.000	0.065
1 1/2	7.375	6.187	1.187	1.500	0.065
2	8.625	7.125	1.500	2.000	0.065
2 1/2	10.125	8.500	1.625	2.500	0.065
3	10.750	8.875	1.875	3.000	0.065
4	12.812	10.750	2.062	4.000	0.083
6	18.000	14.500	3.500	6.000	0.109

### E28WB - TRUE Y



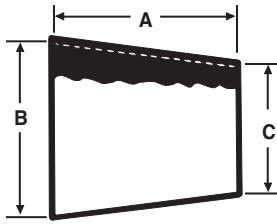
Size Tube OD	A	Nom. Wall
1	3.000	0.065
1 1/2	3.000	0.065
2	4.000	0.065
2 1/2	5.000	0.065
3	6.000	0.065
4	8.000	0.083
6	8.000	0.109

### E28RWA - 45° REDUCING LATERAL



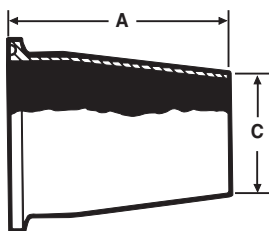
Size Tube OD	A	B	C	Nom. Wall
1 1/2 x 1	7.375	6.187	1.187	0.065
2 x 1	8.625	7.125	1.625	0.065
2 x 1 1/2	8.625	7.125	1.625	0.065
2 1/2 x 1	10.125	8.500	1.500	0.065
2 1/2 x 1 1/2	10.125	8.500	1.500	0.065
2 1/2 x 2	10.125	8.500	1.500	0.065
3 x 1	10.750	8.875	1.875	0.065
3 x 1 1/2	10.750	8.875	1.875	0.065
3 x 2	10.750	8.875	1.875	0.065
3 x 2 1/2	10.750	8.875	1.875	0.065
4 x 1	12.812	10.750	2.062	0.083 x .065
4 x 1 1/2	12.812	10.750	2.062	0.083 x .065
4 x 2	12.812	10.750	2.062	0.083 x .065
4 x 2 1/2	12.812	10.750	2.062	0.083 x .065
4 x 3	12.812	10.750	2.062	0.083 x .065

### E31WW - CONCENTRIC REDUCER / LA-E31WW - CONCENTRIC REDUCER



	Size Tube OD	A	B	C	Nom. Wall
[LA]	3/4 x 1/2	*	0.750	0.500	0.065
[LA]	1 x 1/2	*	1.000	0.500	0.065
[LA ONLY]	1 x 1/2 x 2.0	2.000	1.000	0.500	0.065
[LA]	1 x 3/4	*	1.000	0.750	0.065
[LA]	1 1/2 x 1/2	*	1.500	0.500	0.065
[LA ONLY]	1 1/2 x 1/2 x 2.0	2.000	1.500	0.500	0.065
[LA]	1 1/2 x 3/4	*	1.500	0.750	0.065
[LA]	1 1/2 x 1	2.000	1.500	1.000	0.065
[LA]	1 1/2 x 1 1/4	1.000	1.500	1.250	0.065
[LA]	2 x 1	4.000	2.000	1.000	0.065
	2 x 1 1/4	3.000	2.000	1.250	0.065
[LA]	2 x 1 1/2	2.000	2.000	1.500	0.065
[LA ONLY]	2 1/2 x 1	6.000	2.500	1.000	0.065
[LA]	2 1/2 x 1 1/2	4.000	2.500	1.500	0.065
[LA]	2 1/2 x 2	2.000	2.500	2.000	0.065
[LA ONLY]	3 x 1	8.000	3.000	1.000	0.065
[LA]	3 x 1 1/2	6.000	3.000	1.500	0.065
[LA]	3 x 2	4.000	3.000	2.000	0.065
[LA]	3 x 2 1/2	2.000	3.000	2.500	0.065
[LA ONLY]	4 x 1	12.000	4.000	1.000	0.083 x .065
[LA ONLY]	4 x 1 1/2	10.000	4.000	1.500	0.083 x .065
[LA]	4 x 2	8.000	4.000	2.000	0.083 x .065
[LA]	4 x 2 1/2	6.000	4.000	2.500	0.083 x .065
[LA]	4 x 3	4.000	4.000	3.000	0.083 x .065
	6 x 2	5.500	6.000	2.000	0.109 x .065
	6 x 3	5.500	6.000	3.000	0.109 x .083
	6 x 4	5.500	6.000	4.000	0.109 x .083

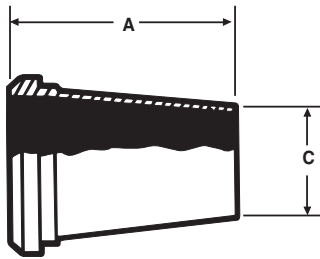
### E31CW - CONCENTRIC REDUCER CLAMP X WELD



	Size Tube OD	A	C	Nom. Wall
	1 1/2 x 1	2.500	1.000	0.065
	2 x 1 1/2	2.500	1.500	0.065
	2 1/2 x 1 1/2	4.500	1.500	0.065
	2 1/2 x 2	2.500	2.000	0.065
	3 x 2	4.500	2.000	0.065
	3 x 2 1/2	2.500	2.500	0.065
	4 x 2	8.625	2.000	0.065
	4 x 2 1/2	6.625	2.500	0.065
	4 x 3	4.625	3.000	0.065
	6 x 4	6.375	4.000	0.083

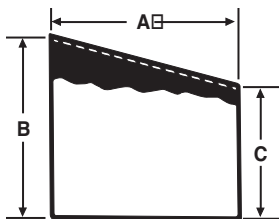


### E31PW - CONCENTRIC REDUCER PLAIN BEVEL X WELD



Size Tube OD	A	C	Nom. Wall
1 1/2 x 1	2.687	1.000	0.065
2 x 1 1/2	2.718	1.500	0.065
2 1/2 x 1 1/2	4.843	1.500	0.065
2 1/2 x 2	2.843	2.000	0.065
3 x 2	4.937	2.000	0.065
3 x 2 1/2	2.937	2.500	0.065
4 x 2	9.000	2.000	0.065
4 x 2 1/2	7.000	2.500	0.065
4 x 3	5.000	3.000	0.065

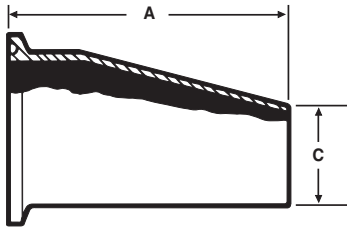
### E32WW - ECCENTRIC REDUCER / LA-E32WW - ECCENTRIC REDUCER



Size Tube OD A	B	C	Nom. Wall	
[LA] 3/4 x 1/2	*	0.750	0.500	0.065
[LA] 1 x 1/2	*	1.000	0.500	0.065
[LA] 1 x 3/4	*	1.000	0.750	0.065
[LA] 1 1/2 x 1/2	*	1.500	0.500	0.065
[LA] 1 1/2 x 3/4	*	1.500	0.750	0.065
[LA] 1 1/2 x 1	2.000	1.500	1.000	0.065
1 1/2 x 1 1/4	1.000	1.500	1.250	0.065
[LA] 2 x 1	4.000	2.000	1.250	0.065
2 x 1 1/4	3.000	2.000	1.250	0.065
[LA] 2 x 1 1/2	2.000	2.000	1.500	0.065
[LA] 2 1/2 x 1 1/2	4.000	2.500	1.500	0.065
[LA] 2 1/2 x 2	2.000	2.500	2.000	0.065
[LA ONLY] 3 X 1	8.000	3.000	1.000	0.065
[LA ONLY] 3 X 1 1/2	6.000	3.000	1.500	0.065
[LA] 3 x 2	4.000	3.000	2.000	0.065
[LA] 3 x 2 1/2	2.000	3.000	2.500	0.065
[LA ONLY] 4 X 1	12.000	4.000	1.000	0.083 x .065
[LA ONLY] 4 X 1 1/2	10.000	4.000	1.500	0.083 x .065
4 x 2	8.000	4.000	2.000	0.083 x .065
4 x 2 1/2	6.000	4.000	2.500	0.083 x .065
4 x 3	4.000	4.000	3.000	0.083 x .065
6 x 2	5.500	6.000	2.000	0.109 x .065
6 x 3	5.500	6.000	3.000	0.109 x .083
6 x 4	5.500	6.000	4.000	0.109 x .083

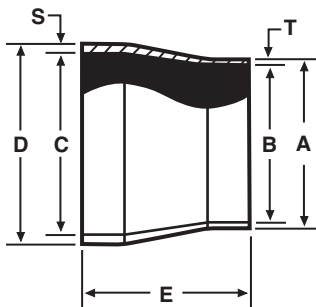
\* Contact VNE for dimensions.

### E32CW - ECCENTRIC REDUCER CLAMP X WELD



Size Tube OD	A	C	Nom. Wall
1 1/2 X 1	2.500	1.000	0.065
2 x 1 1/2	2.500	1.500	0.065
2 1/2 x 1 1/2	4.500	1.500	0.065
2 1/2 x 2	2.500	2.000	0.065
3 x 2	4.500	2.000	0.065
3 x 2 1/2	2.500	2.500	0.065
4 x 2	8.625	2.000	0.065
4 x 2 1/2	6.625	2.500	0.065
4 x 3	4.625	3.000	0.065
6 x 4	6.375	4.000	0.083

### E17WW-6L - TUBE X PIPE ADAPTER



Size Tube OD	A	B	SCH5 C	SCH10 C	SCH40 C	D
1/2	0.500	0.370	0.710	0.674	0.622	0.840
3/4	0.750	0.620	0.920	0.884	0.824	1.050
1	1.000	0.870	1.185	1.097	1.049	1.315
1 1/2	1.500	1.370	1.770	1.682	1.610	1.900
2	2.000	1.870	2.245	2.157	2.067	2.375
2 1/2	2.500	2.370	2.709	2.635	2.469	2.875
3	3.000	2.870	3.334	3.260	3.068	3.500
4	4.000	3.834	4.334	4.260	4.026	4.500
6	6.000	5.782	6.407	6.357	6.065	6.625

Size Tube OD	E	T	SCH5 S	SCH10 S	SCH40 S
1/2	1.000	0.065	0.065	0.083	0.109
3/4	1.000	0.065	0.065	0.083	0.113
1	1.000	0.065	0.065	0.109	0.133
1 1/2	1.500	0.065	0.065	0.109	0.145
2	1.500	0.065	0.065	0.109	0.154
2 1/2	1.500	0.065	0.083	0.120	0.203
3	2.000	0.065	0.083	0.120	0.216
4	2.000	0.083	0.083	0.120	0.237
6	3.000	0.109	0.109	0.134	0.280



## BEVEL SEAT FITTINGS....

Bevel Seat Fittings are used on process equipment and piping to ensure rigidity of the system. Bevel Seat Unions consist of a Threaded Bevel Ferrule mated with a Plain Bevel Ferrule. Both are offered in T304 and T316L material. Hex Union Nuts made of only T304 material are used to complete the union. Gaskets for VNE's Bevel Seat Unions are not required for positive shut-off. However, gaskets may be purchased upon request.

VNE's Bevel Seat Fittings meet all 3A requirements and are available in 1" through 4" sizes.

## BEVEL SEAT SPECIFICATIONS....

**Size Range:** 1" OD through 4" OD

**Materials:** T304  
T316L

**Finish:** No. 7 - ID & OD  
No. 5 - OD only  
No. 3 - ID only  
No. 1 - unpolished

## ORDERING SPECIFICATIONS....

**Specify:**

- Quantity
- Product description or Part No.
- Size
- Material Type
- Polish Requirements

## LIMITED WARRANTY....

VNE Corporation products are warranted to be free from defects in material and workmanship for a period of one year from the date of shipment. Any product that proves to be defective shall be repaired or replaced at the option of VNE, providing it has been used as recommended and in strict accordance with recognized piping practices, and that has not been subject to extraordinary service, such as encountered under severe corrosive or abrasive conditions.

VNE makes no warranties, express or implied, other than those listed above.

VNE shall not be liable for any consequential, indirect, incidental or contingent damages.



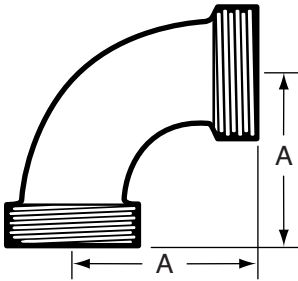


## BEVEL SEAT TYPE

VNE	ALFA LAVAL	WAUKESHA / SPX	BRADFORD	STEEL & O'BRIEN
2C	2C	2C	B2C	2C
2E	2E	2E	B2E	2E
2F	2F	2F	B2F	2F
2F-31	2F-31	2F-31	2F-31	2F-31
2K	2K	2K	2K	2K
2P	2P	2P	B2P	2P
7	7	7	7	7
7A	7A	7A	7A	7A
7B	7B	7B	7B	7B
9	9	9	9	9
9A	9A	9A	9A	9A
13H	13H	13H	13H	13H
14	14	14	14	14
14A	L14A7	14A	14A	14A
14AHR	14AHR	14AHR	14AHR	14AHR
14AHT	14AHT	14AHT	14AHT	14AHT
14R	14R	14R	14R	14R
14W	14W	14W	14W	14W
14-22	14-22	14-22	14-22	14-18
14WL	14WL	14WL	14WL	14WL
14-19	14-19	21F	14-19	14-19
14PR	14PRF	14RW	14PRF	14++
15	15	15	15	15
15TR	15TRF	15RW	15TRF	15++
15A	L15A7	15A	15A	15A
15AHR	15AHR	15AHR	15AHR	15AHR
15AHT	15AHT	15AHT	15AHT	15AHT
15R	15R	15R	15R	15R
15W	15W	15W	15W	15W
15WL	15WL	15WL	15WL	15WL
16A	16A	16A	16A	16A
21	21	21	21	21
23B	23B	23B	23B	23B
22	22	22	22	22
31TT	31TT	31TT	B31TT	31TT
31TP	31TP	31TP	B31TP	31TP
31-14F	31-14F	31-14F	B3114F	31-14F
31-15F	31-15F	31-15F	B3115F	31-15F
32-14F	32-14F	32-14F	B3214F	32-14F
32-15F	32-15F	32-15F		32-15F

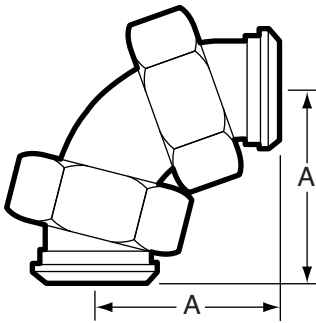
# Bevel Seat Fittings

## 2C - 90° ELBOW THREADED



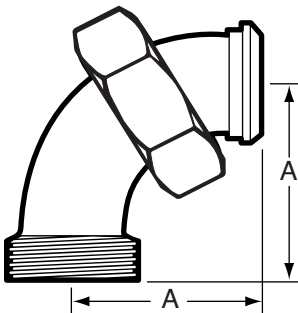
Size Tube OD	A
1	2.187
1 1/2	2.937
2	3.718
2 1/2	4.593
3	5.437
4	7.000

## 2E - 90° ELBOW BEVEL SEAT WITH 13H NUT



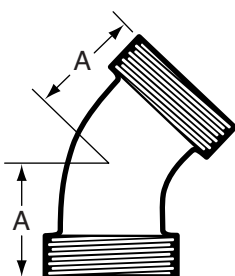
Size Tube OD	A
1	2.000
1 1/2	2.875
2	3.718
2 1/2	4.843
3	5.906
4	8.062

## 2F - 90° ELBOW THREADED X 13H NUT



Size Tube OD	A
1	2.000
1 1/2	2.875
2	3.718
2 1/2	4.843
3	5.906
4	8.062

## 2K - 45° ELBOW THREADED

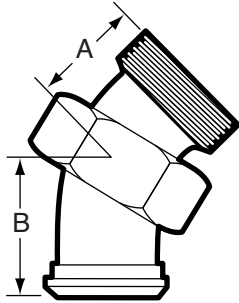


Size Tube OD	A
1	2.000
1 1/2	2.312
2	2.687
2 1/2	3.250
3	3.750
4	4.500



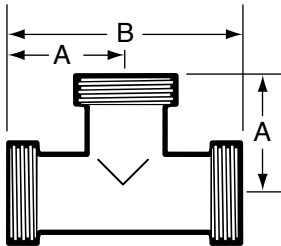
# Bevel Seat Fittings

## 2P - 45° ELBOW 13H NUT X THREAD



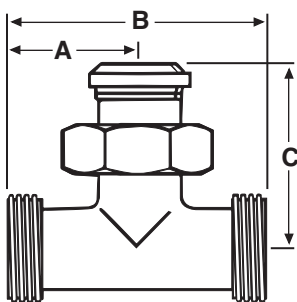
Size Tube OD	A	B
1	1.312	2.000
1 1/2	1.625	2.437
2	1.937	2.750
2 1/2	2.375	3.312
3	2.812	3.625
4	3.500	4.250

## 7 - TEE ALL ENDS THREADED



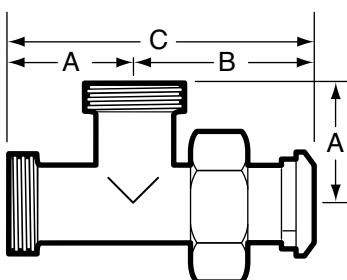
Size Tube OD	A	B
1	1.812	3.625
1 1/2	2.375	4.750
2	2.781	5.437
2 1/2	3.187	6.375
3	3.500	7.000
4	4.656	9.312

## 7A - TEE THREADED X THREADED X 13H NUT



Size Tube OD	A	B	C
1	1.812	3.625	2.500
1 1/2	2.375	4.750	3.125
2	2.781	5.437	3.562
2 1/2	3.187	6.375	4.062
3	3.500	7.000	4.312
4	4.656	9.312	5.375

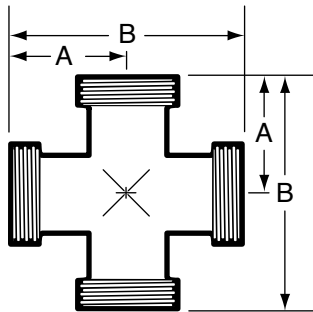
## 7B - TEE THREADED X 13H NUT X THREADED



Size Tube OD	A	B	C
1	1.182	2.500	4.313
1 1/2	2.375	3.125	5.500
2	2.781	3.562	6.343
2 1/2	3.187	4.062	7.250
3	3.500	4.312	7.812
4	4.656	5.375	10.031

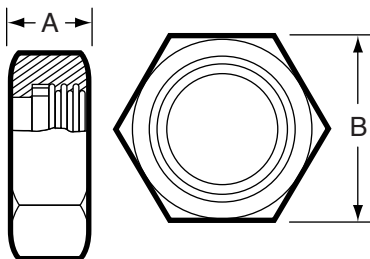
# Bevel Seat Fittings

## 9 - CROSS THREADED



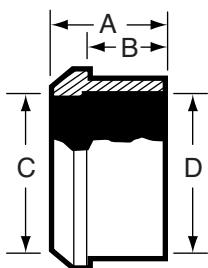
Size Tube OD	A	B
1	1.812	3.625
1 1/2	2.375	4.750
2	2.781	5.437
2 1/2	3.187	6.375
3	3.500	7.000
4	4.656	9.312

## 13H - HEX UNION NUT



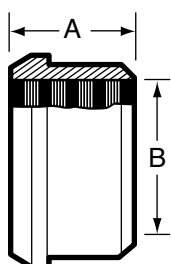
Size Tube OD	A	B
1	0.906	1.812
1 1/2	0.968	2.406
2	1.062	3.000
2 1/2	1.187	3.593
3	1.281	4.187
4	1.500	5.437

## 14 - PLAIN RECESSED FERRULE (T316L Material Only)



Size Tube OD	A	B	C	D
1	0.750	0.500	0.870	1.000
1 1/2	0.875	0.625	1.370	1.500
2	0.968	0.687	1.870	2.000
2 1/2	1.062	0.750	2.370	2.500
3	1.125	0.812	2.870	3.000
4	1.250	0.812	3.834	4.000

## 14R - PLAIN RECESSLESS FERRULE (Expanding)

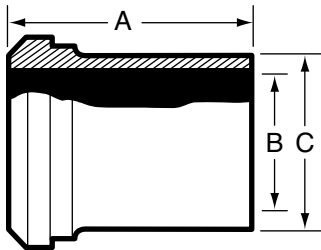


Size Tube OD	A	B
1	0.750	1.000
1 1/2	1.125	1.500
2	1.312	2.000
2 1/2	1.375	2.500
3	1.437	3.000
4	1.500	4.000



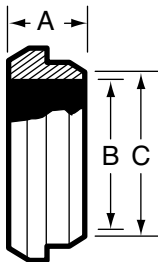
# Bevel Seat Fittings

## 14A - PLAIN WELDING FERRULE



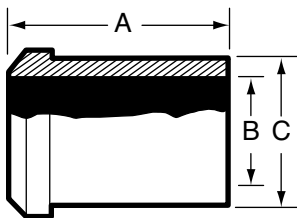
Size Tube OD	A	B	C
1	1.375	0.870	1.000
1 1/2	1.500	1.370	1.500
2	1.500	1.870	2.000
2 1/2	1.750	2.370	2.500
3	1.750	2.870	3.000
4	1.750	3.834	4.000

## 14PR - SHORT PLAIN WELDING FERRULE



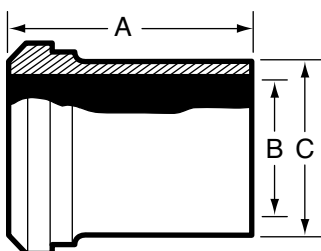
Size Tube OD	A	B	C
1	0.687	0.870	1.000
1 1/2	0.687	1.370	1.500
2	0.718	1.870	2.000
2 1/2	0.843	2.370	2.500
3	0.937	2.870	3.000
4	1.000	3.834	4.000

## 14W - TANK WELDING PLAIN FERRULE



Size Tube OD	A	B	C
1	2.375	0.870	1.156
1 1/2	2.531	1.370	1.671
2	2.781	1.870	2.187
2 1/2	3.062	2.370	2.703
3	3.531	2.870	3.218
4	4.312	3.834	4.250

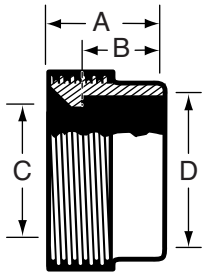
## 14WL - LONG PLAIN WELDING FERRULE



Size Tube OD	A	B	C
1	2.000	0.870	1.000
1 1/2	2.250	1.370	1.500
2	2.500	1.870	2.000
2 1/2	2.750	2.370	2.500
3	3.000	2.870	3.000
4	4.000	3.834	4.000

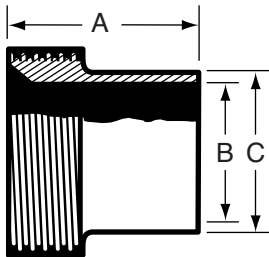
# Bevel Seat Fittings

## 15 - THREADED RECESSED FERRULE (T316L Material Only)



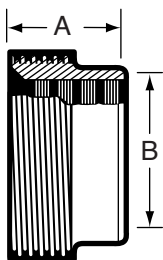
Size Tube OD	A	B	C	D
1	1.187	0.500	0.870	1.000
1 1/2	0.875	0.625	1.370	1.500
2	1.031	0.687	1.870	2.000
2 1/2	1.125	0.750	2.370	2.500
3	1.250	0.812	2.870	3.000
4	1.375	0.937	3.834	4.000

## 15A - THREADED WELDING FERRULE



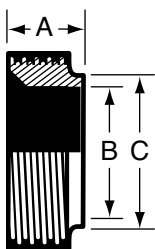
Size Tube OD	A	B	C
1	1.375	0.870	1.000
1 1/2	1.500	1.370	1.500
2	1.500	1.870	2.000
2 1/2	1.750	2.370	2.500
3	1.750	2.870	3.000
4	1.750	3.834	4.000

## 15R - THREADED RECESSLESS FERRULE (Expanding)



Size Tube OD	A	B
1	0.812	1.000
1 1/2	1.125	1.500
2	1.375	2.000
2 1/2	1.500	2.500
3	1.625	3.000
4	1.625	4.000

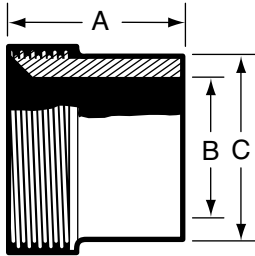
## 15TR - SHORT THREADED WELDING FERRULE



Size Tube OD	A	B	C
1	0.687	0.870	1.000
1 1/2	0.687	1.370	1.500
2	0.718	1.870	2.000
2 1/2	0.843	2.370	2.500
3	0.937	2.870	3.000
4	1.000	3.834	4.000

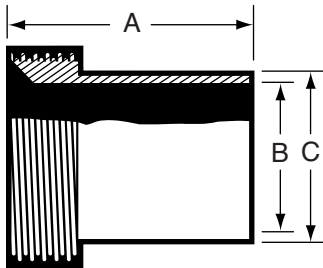
# Bevel Seat Fittings

## 15W - TANK WELDING FERRULE



Size Tube OD	A	B	C
1	1.500	0.870	1.250
1 1/2	1.625	1.370	1.750
2	1.750	1.870	2.312
2 1/2	1.750	2.370	2.875
3	1.812	2.870	3.375
4	2.125	3.834	4.250

## 15WL - LONG WELDING FERRULE



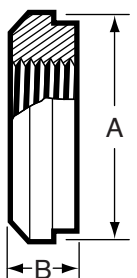
Size Tube OD	A	B	C
1	2.000	0.870	1.000
1 1/2	2.250	1.370	1.500
2	2.500	1.870	2.000
2 1/2	2.750	2.370	2.500
3	3.000	2.870	3.000
4	4.000	3.834	4.000

## 16A - PLAIN CAP



Size Tube OD	A	B
1	1.312	0.468
1 1/2	1.843	0.562
2	2.375	0.625
2 1/2	2.906	0.656
3	3.437	0.718
4	4.500	0.812

## 23B - TAPPED THERMOMETER CAP

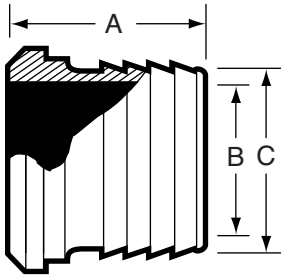


Size Tube OD	A	B
*1	1.312	0.468
1 1/2	1.843	0.562
2	2.375	0.625
2 1/2	2.906	0.656
3	3.437	0.718
4	4.500	0.812

\*1" Standard 1/2" FNPT. All others 3/4".

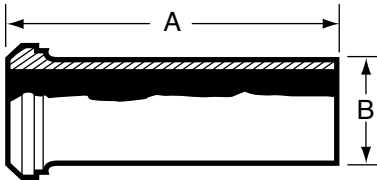
# Bevel Seat Fittings

## 14AHR - RUBBER HOSE ADAPTER



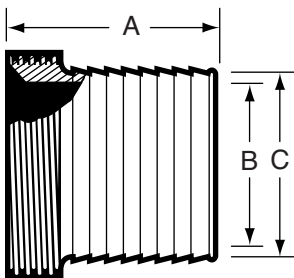
Size Tube OD	A	B	C
1	Contact VNE	0.870	1.000
1 1/2	Contact VNE	1.370	1.500
2	Contact VNE	1.870	2.000
2 1/2	Contact VNE	2.370	2.000
3	Contact VNE	2.870	3.000
4	Contact VNE	3.834	4.000

## 14AHT - TYGON HOSE ADAPTER



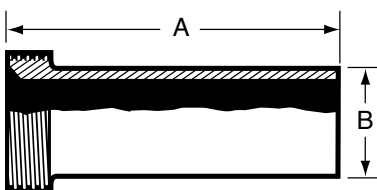
Size Tube OD	A	B
1	4.687	1.000
1 1/2	4.718	1.500
2	4.718	2.000
2 1/2	4.843	2.500
3	4.906	3.000
4	5.218	4.000

## 15AHR - THREADED RUBBER HOSE ADAPTER



Size Tube OD	A	B	C
1	Contact VNE	0.870	1.000
1 1/2	Contact VNE	1.370	1.500
2	Contact VNE	1.870	2.000
2 1/2	Contact VNE	2.370	2.000
3	Contact VNE	2.870	3.000
4	Contact VNE	3.834	4.000

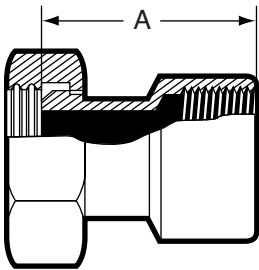
## 15AHT - THREADED TYGON HOSE ADAPTER



Size Tube OD	A	B
1	4.687	1.000
1 1/2	4.718	1.500
2	4.718	2.000
2 1/2	4.843	2.500
3	4.906	3.000
4	5.218	4.000

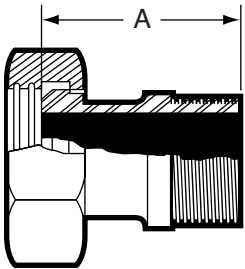
# Bevel Seat Fittings

## 14-22 - ADAPTER 13H NUT X FNPT



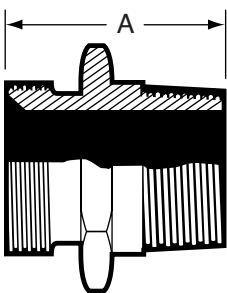
Size Tube OD	A
1	2.500
1 1/2	2.937
2	2.937
2 1/2	3.375
3	3.562
4	3.750

## 14-19 - ADAPTER 13H NUT X MNPT



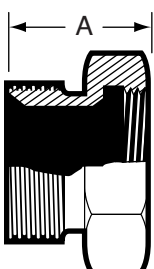
Size Tube OD	A
1	3.125
1 1/2	3.250
2	3.312
2 1/2	4.062
3	4.250
4	4.312

## 21 - ADAPTER ACME THREAD X MNPT



Size Tube OD	A
1	2.437
1 1/2	2.437
2	2.531
2 1/2	3.156
3	3.406
4	3.593

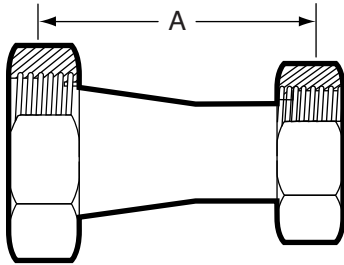
## 22 - ADAPTER ACME THREAD X FNPT



Size Tube OD	A
1	1.937
1 1/2	2.156
2	2.156
2 1/2	2.468
3	2.718
4	3.031

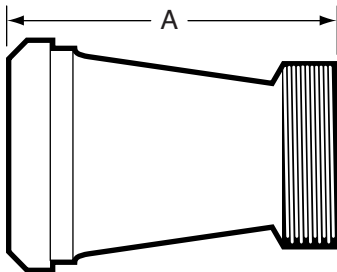
# Bevel Seat Fittings

## 31-14F - CONCENTRIC REDUCER 13H X 13H



Size Tube OD	A
1 1/2 x 1	4.062
2 x 1	6.093
2 x 1 1/2	4.218
2 1/2 x 1 1/2	6.343
2 1/2 x 2	4.343
3 x 2	6.437
3 x 2 1/2	4.687
4 x 2 1/2	8.750
4 x 3	6.750

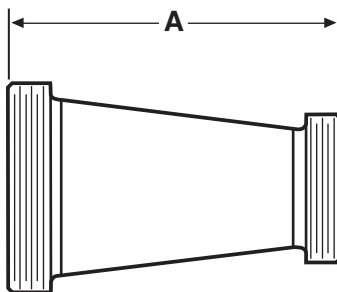
## 31-15F - CONCENTRIC REDUCER PLAIN BEVEL X THREAD



Size Tube OD	A
*1 1/2 x 1	3.375
2 x 1	5.406
2 x 1 1/2	3.406
2 1/2 x 1 1/2	5.531
2 1/2 x 2	3.562
3 x 2	5.656
3 x 2 1/2	3.781
4 x 2 1/2	7.843
4 x 3	5.937

\*Hex Nut included.

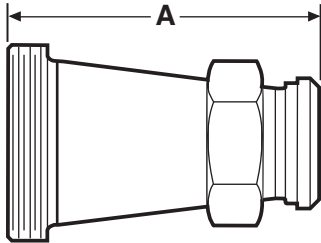
## 31TT - CONCENTRIC REDUCER THREAD X THREAD



Size Tube OD	A
1 1/2 x 1	3.375
2 x 1	5.406
2 x 1 1/2	3.406
2 1/2 x 1 1/2	5.531
2 1/2 x 2	3.562
3 x 2	5.656
3 x 2 1/2	3.781
4 x 2 1/2	7.843
4 x 3	5.937

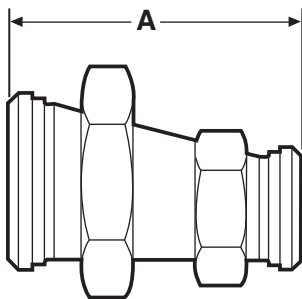
# Bevel Seat Fittings

## 31TP - CONCENTRIC REDUCER THREAD X 13H NUT



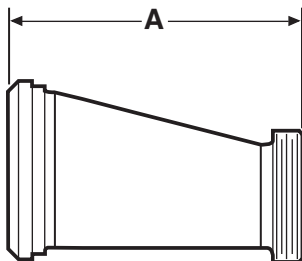
Size Tube OD	A
1 1/2 x 1	4.062
2 x 1	6.093
2 x 1 1/2	4.218
2 1/2 x 1 1/2	6.343
2 1/2 x 2	4.343
3 x 2	6.437
3 x 2 1/2	4.687
4 x 2	10.500
4 x 2 1/2	8.750
4 x 3	6.750

## 32-14F - ECCENTRIC REDUCER 13H NUT X 13H NUT



Size Tube OD	A
1 1/2 x 1	4.062
2 x 1	6.093
2 x 1 1/2	4.218
2 1/2 x 1 1/2	6.143
2 1/2 x 2	4.343
3 x 2	6.437
3 x 2 1/2	4.687
4 x 2	10.500
4 x 2 1/2	8.750
4 x 3	6.750

## 32-15F - ECCENTRIC REDUCER PLAIN BEVEL X THREAD

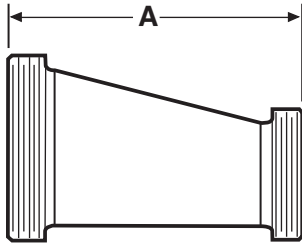


Size Tube OD	A
*1 1/2 x 1	3.375
2 x 1	5.406
2 x 1 1/2	3.406
2 1/2 x 1 1/2	5.531
2 1/2 x 2	3.562
3 x 2	5.656
3 x 2 1/2	3.781
4 x 2	9.718
4 x 2 1/2	7.843
4 x 3	5.937

\*Hex Nut included.

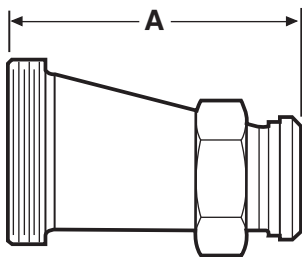
# Bevel Seat Fittings

## 32TT - ECCENTRIC REDUCER THREAD X THREAD



Size Tube OD	A
1 1/2 x 1	3.375
2 x 1	5.406
2 x 1 1/2	3.406
2 1/2 x 1 1/2	5.531
2 1/2 x 2	3.562
3 x 2	5.656
3 x 2 1/2	3.781
4 x 2	9.718
4 x 2 1/2	7.843
4 x 3	5.937

## 32TP - ECCENTRIC REDUCER THREAD X 13H NUT

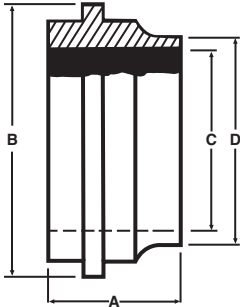


Size Tube OD	A
1 1/2 x 1	4.062
2 x 1	6.093
2 x 1 1/2	4.218
2 1/2 x 1 1/2	6.343
2 1/2 x 2	4.343
3 x 2	6.437
3 x 2 1/2	4.687
4 x 2	10.500
4 x 2 1/2	8.750
4 x 3	6.750



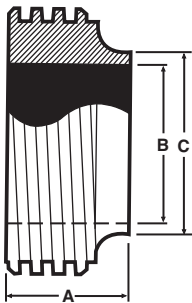
## JOHN PERRY (T316L Material Only)

### 14PRJP - SHORT PLAIN WELDING FERRULE



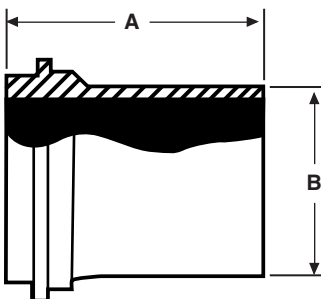
Size Tube OD	A	B	C	D
1	0.643	1.316	0.870	1.000
1 1/2	0.643	1.848	1.370	1.500
2	0.710	2.380	1.870	2.000
2 1/2	0.807	2.912	2.370	2.500
3	0.807	3.444	2.870	3.000
4	1.009	4.508	3.834	4.000

### 15TRJP - SHORT THREAD WELDING FERRULE



Size Tube OD	A	B	C
1	0.625	0.870	1.000
1 1/2	0.625	1.370	1.500
2	0.684	1.870	2.000
2 1/2	0.743	2.370	2.500
3	0.806	2.870	3.000
4	0.900	3.834	4.000

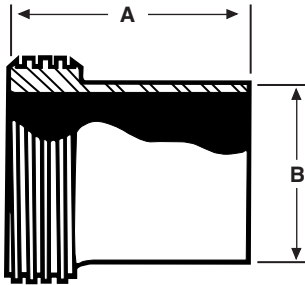
### 14AJP - LONG PLAIN WELDING FERRULE



Size Tube OD	A	B
1	1.375	1.000
1 1/2	1.500	1.500
2	1.500	2.000
2 1/2	1.750	2.500
3	1.750	3.000
4	1.750	4.000

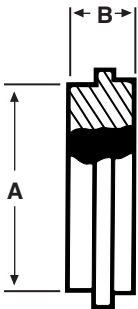
## JOHN PERRY (T316L Material Only)

### 15AJP - LONG THREAD WELDING FERRULE



Size Tube OD	A	B
1	1.375	1.000
1 1/2	1.500	1.500
2	1.500	2.000
2 1/2	1.750	2.500
3	1.750	3.000
4	1.750	4.000

### 16AJP - CAP



Size Tube OD	A	B
1	1.125	0.468
1 1/2	1.656	0.500
2	2.187	0.531
2 1/2	2.656	0.594
3	3.187	0.625
4	4.187	0.625



## E-LINE FITTINGS....

E-Line Fittings have a male and female interface construction to ensure rigidity of your system.

VNE offers E-Line Fittings in sizes 1" through 6" in T304 and T316L material. VNE offers Polished ID and OD Fittings for immediate shipment. Other polished combinations may be ordered.

Gaskets for E-Line Fittings are available in several different materials, Buna-N, EPDM, Teflon®, Silicone, and Viton.

## E-LINE FITTING SPECIFICATIONS....

**Size Range:** 1" OD through 6" OD

**Materials:** T304  
T316L

**Finish:** No. 7 - ID & OD  
No. 5 - OD only  
No. 3 - ID only  
No. 1 - unpolished

## ORDERING SPECIFICATIONS....

**Specify:**

- Quantity
- Product description or Part No.
- Size
- Material Type
- Polish Requirements

## LIMITED WARRANTY....

VNE Corporation products are warranted to be free from defects in material and workmanship for a period of one year from the date of shipment. Any product that proves to be defective shall be repaired or replaced at the option of VNE, providing it has been used as recommended and in strict accordance with recognized piping practices, and that has not been subject to extraordinary service, such as encountered under severe corrosive or abrasive conditions.

VNE makes no warranties, express or implied, other than those listed above.

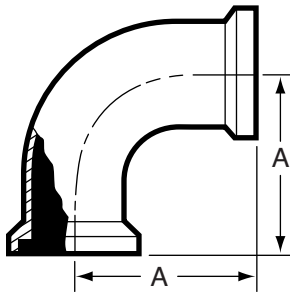
VNE shall not be liable for any consequential, indirect, incidental or contingent damages.



### E-LINE TYPE

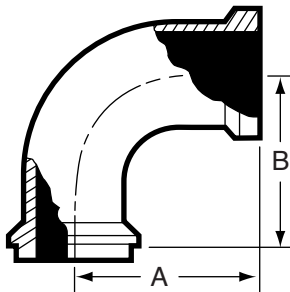
VNE	ROBERT JAMES	WAUKESHA / SPX	Bradford	Steel & O'Brien
E2CI	RJ2CZ	2CI	B2CI	HDI-2C
E2FI	RJ2FZ	2FI	B2FI	HDI-2F
E2EI	----	2EI	B2EI	HDI-2E
E2KI	RJ2KZ	2KI	B2KI	HDI-2K
E2PI	RJ2PZ	2PI	B2PI	HDI-2P
E7I	RJ7Z	7I	B7I	HDI-7
E7AI	RJ7AZ	7AI	B7AI	----
E7EI	RJ7EZ	7EI	B7EI	----
E7BI	RJ7BZ	7BI	B7BI	----
E9I	RJ9Z	9I	B9I	----
E13IS	RJ13ZS	13IS	13ILH	HDI-13-UD
E13IU	RJ13Z	13IU	13IU	HDI-13-U
E14WI	RJ14WZ	14WI	14WI	14WH
E15WI	RJ15WZ	15WI	15WI	15WH
E14WLI	RJ14WLZ	14WLI	14WLI	14WLH
E15WLI	RJ15WLZ	15WLI	15WLI	15WLH
E14HRI	RJ14HRZ	14HRI	14HRI	----
E14HTI	RJ14HTZ	14HTI	14HTI	----
E15HRI	RJ15HRZ	15HRI	15HRI	----
E15HTI	RJ15HTZ	15HTI	15HTI	----
E17-14I-15I	RJ17-14Z-15Z	17-14I-15I	17-14I-15I	----
E17-15I-15I	RJ17-15Z-15Z	17-15I-15I	17-15I-15I	----
E17-14I-14I	RJ17-14Z-14Z	17-14I-14I	17-14I-14I	----
E17-14I-14	RJ17-14Z-14	17-14I-14	17-14I-14	----
E17-14I-14MP	RJ17-14Z-14MP	17-14I-14MP	17-14I-14MP	----
E17-14I-15	RJ17-14Z-15	17-14I-15	17-14I-15	----
E17-15I-14	RJ17-15Z-14	17-15I-14	17-15I-14	----
E17-15I-15	RJ17-15Z-15	17-15I-15L	17-15I-15	----
E17-15I-14MP	RJ17-15Z-14MP	17-15I-14MP	17-15I-MP	----
E21I-14I	RJ21-14Z	21FI-14I	21I-14I	----
E21I-15I	RJ21-15Z	21F1-15I	22I-15I	----
E22I-14I	RJ22-14Z	22FI-14I	22I-14I	----
E22I-15I	RJ22-15Z	22FI-15I	22I-15I	----
E16AI-14I	RJ16AZ-14Z	16AI-14I	16AI-14I	HDI-16A-14
E16AI-15I	RJ16AZ-15Z	16AI-15I	16AI-15I	HDI-16A-15
E31I-14I	RJ31Z-14Z	31I-14FI	31I-14I	HDI-31-14F
E31I-15I	RJ31Z-15Z	31I-15FI	31I-15I	HDI-31-15F
E31I-15I-14I	RJ31Z-15Z-14Z	----	31I-15I-14I	----
E31I-15I-15I	RJ31Z-15Z-15Z	----	31I-15I-15I	----
E32I-14I	RJ32Z-14Z	32I-14FI	32I-14I	HDI-32-14F
E32I-15I	RJ32Z-15Z	32I-15FI	32I-15I	HDI-32-15F
E14WHI	----	14WHI	14WHI	
E15WHI	----	15WHI	15WHI	

## E2CI - 90° ELBOW FEMALE X FEMALE



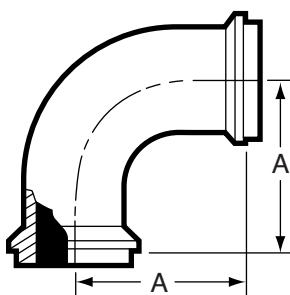
Size Tube OD	A
1	2.281
1 1/2	3.182
2	4.031
2 1/2	4.906
3	5.718
4	7.343
6	10.125

## E2FI - 90° ELBOW MALE X FEMALE



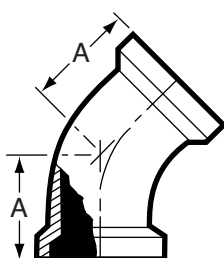
Size Tube OD	A	B
1	2.281	2.093
1 1/2	3.187	3.000
2	4.031	3.781
2 1/2	4.906	4.593
3	5.718	5.406
4	7.343	7.031
6	10.125	9.187

## E2EI - 90° ELBOW MALE X MALE



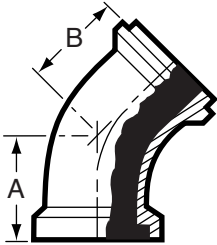
Size Tube OD	A
1	2.093
1 1/2	3.000
2	3.781
2 1/2	4.593
3	5.406
4	7.031
6	9.187

## E2KI - 45° ELBOW FEMALE X FEMALE



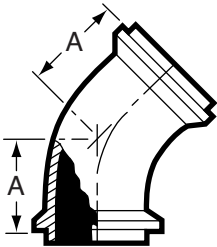
Size Tube OD	A
1	1.406
1 1/2	1.875
2	2.281
2 1/2	2.718
3	3.093
4	3.843
6	4.875

## E2PI - 45° ELBOW FEMALE X MALE



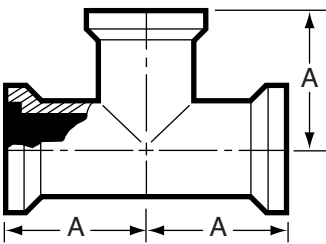
Size Tube OD	A	B
1	1.406	1.218
1 1/2	1.875	1.687
2	2.281	2.031
2 1/2	2.718	2.406
3	3.093	2.781
4	3.843	3.531
6	4.875	4.562

## E2HI - 45° ELBOW MALE X MALE



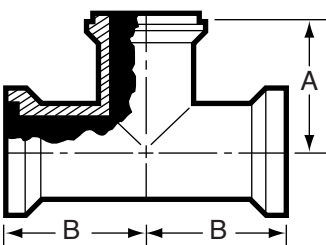
Size Tube OD	A
1	1.218
1 1/2	1.687
2	2.031
2 1/2	2.406
3	2.781
4	3.531
6	4.562

## E7I - TEE ALL ENDS FEMALE



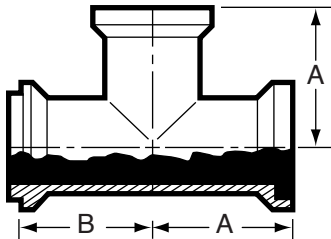
Size Tube OD	A
1	1.875
1 1/2	2.593
2	3.062
2 1/2	3.468
3	3.812
4	4.968
6	6.750

## E7AI - TEE FEMALE X FEMALE X MALE



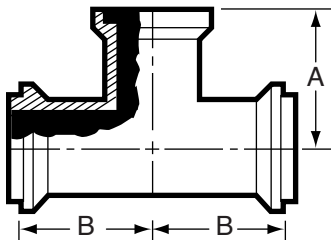
Size Tube OD	A	B
1	1.687	1.875
1 1/2	2.406	2.593
2	2.812	3.062
2 1/2	3.156	3.468
3	3.500	3.812
4	4.656	4.968
6	6.437	6.750

### E7BI - TEE MALE X FEMALE X FEMALE



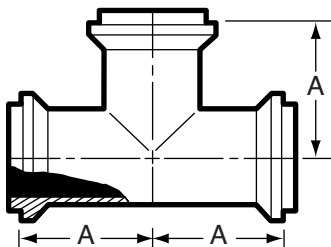
Size Tube OD	A	B
1	1.875	1.687
1 1/2	2.593	2.406
2	3.062	2.812
2 1/2	3.468	3.156
3	3.812	3.500
4	4.968	4.656
6	6.750	6.437

### E7EI - TEE MALE X MALE X FEMALE



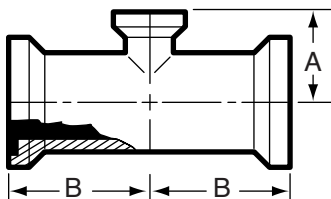
Size Tube OD	A	B
1	1.875	1.687
1 1/2	2.593	2.406
2	3.062	2.812
2 1/2	3.468	3.156
3	3.812	3.500
4	4.968	4.656
6	6.750	6.437

### E7HI - TEE ALL ENDS MALE



Size Tube OD	A
1	1.687
1 1/2	2.406
2	2.812
2 1/2	3.156
3	3.500
4	4.656
6	6.437

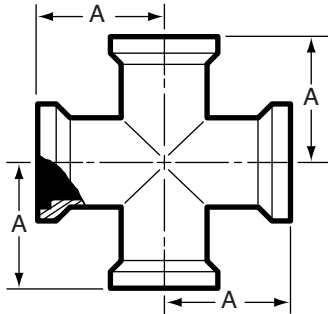
### E7RI - REDUCING TEE ALL ENDS FEMALE



Size Tube OD	A	B
1 1/2 x 1	2.156	2.593
2 x 1	3.093	4.031
2 x 1 1/2	2.718	3.062
2 1/2 x 1 1/2	4.156	4.000
2 1/2 x 2	3.312	3.500
3 x 2	3.562	3.812
3 x 2 1/2	3.750	3.812
4 x 2	5.031	5.218
4 x 2 1/2	4.906	5.218
4 x 3	4 3/84 29/32	5.218
6 x 3	6.843	6.750
6 x 4	6.968	6.750

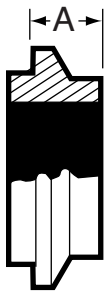


## E9I - CROSS ALL ENDS FEMALE



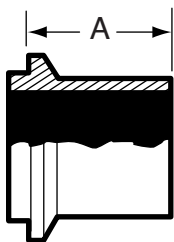
Size Tube OD	A
1	1.875
1 1/2	2.593
2	3.062
2 1/2	3.468
3	3.812
4	4.968
6	6.750

## E14WI - SHORT MALE WELDING FERRULE



Size Tube OD	A
1	0.593
1 1/2	0.750
2	0.781
2 1/2	0.843
3	0.906
4	1.031
6	0.814
8	0.814

## E14WLI - LONG MALE WELDING FERRULE



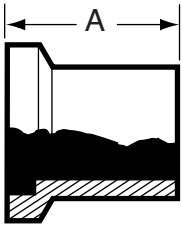
Size Tube OD	A
1	1.563
1 1/2	1.843
2	2.062
2 1/2	2.187
3	2.375
4	2.687
6	3.812

## E15WI - SHORT FEMALE WELDING FERRULE



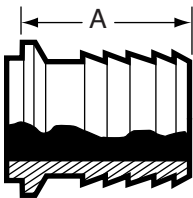
Size Tube OD	A
1	0.781
1 1/2	0.937
2	1.031
2 1/2	1.156
3	1.218
4	1.343
6	1.125
8	1.125

## E15WLI - LONG FEMALE WELDING FERRULE



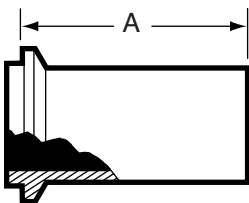
Size Tube OD	A
1	1.750
1 1/2	2.031
2	2.312
2 1/2	2.500
3	2.687
4	3
6	4

## E14HRI - MALE RUBBER HOSE ADAPTER



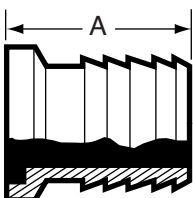
Size Tube OD	A
1	3.562
1 1/2	3.750
2	3.750
2 1/2	3.812
3	3.875
4	4.062
6	8.812

## E14HTI - MALE TYGON HOSE ADAPTER



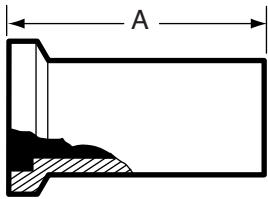
Size Tube OD	A
1	4.062
1 1/2	4.281
2	4.500
2 1/2	4.812
3	5.062
4	5.187

## E15HRI - FEMALE RUBBER HOSE ADAPTER



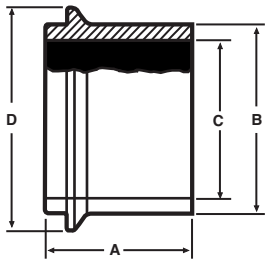
Size Tube OD	A
1	3.750
1 1/2	3.937
2	4.062
2 1/2	4.125
3	4.187
4	4.375
6	9.125

## E15HTI - FEMALE TYGON HOSE ADAPTER



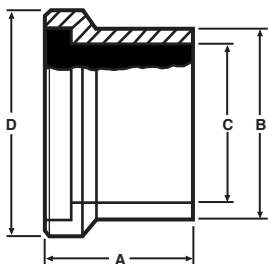
Size Tube OD	A
1	4.250
1 1/2	4.468
2	4.750
2 1/2	5.125
3	5.375
4	5.500

## E14WHI - MALE WELD FERRULE



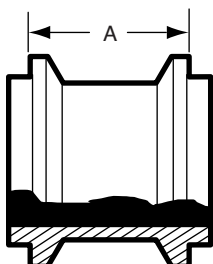
Size Tube OD	A	B	C	D
1	1.625	1.160	0.870	2.000
1 1/2	1.625	1.687	1.370	2.008
2	1.750	2.250	1.870	2.648
2 1/2	1.750	2.708	2.370	3.317
3	1.812	3.313	2.870	3.868
4	2.125	4.250	3.834	4.882

## E15WHI - FEMALE WELD FERRULE



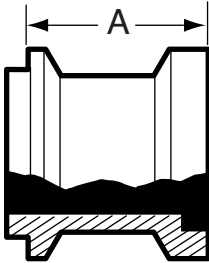
Size Tube OD	A	B	C	D
1	1.625	1.160	0.870	2.000
1 1/2	1.625	1.687	1.370	2.008
2	1.750	2.250	1.870	2.648
2 1/2	1.750	2.708	2.370	3.317
3	1.812	3.313	2.870	3.868
4	2.125	4.250	3.834	4.882

## E17-14I-14I - ADAPTER BOTH ENDS MALE



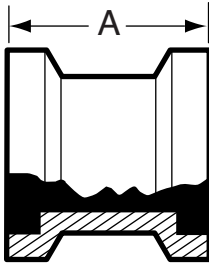
Size Tube OD	A
1	1.187
1 1/2	1.500
2	1.562
2 1/2	1.687
3	1.812
4	2.062
6	1.625

## E17-14I-15I - ADAPTER MALE X FEMALE



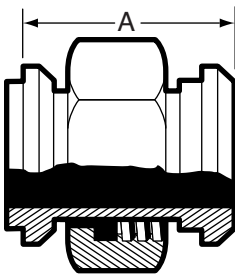
Size Tube OD	A
1	1.375
1 1/2	1.687
2	1.812
2 1/2	1.937
3	2.125
4	2.375
6	1.937

## E17-15I-15I - ADAPTER BOTH ENDS FEMALE



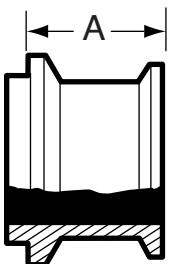
Size Tube OD	A
1	1.562
1 1/2	1.875
2	2.062
2 1/2	2.312
3	2.437
4	2.687
6	2.250

## E17-14I-14-ADAPTER MALE X 13H NUT



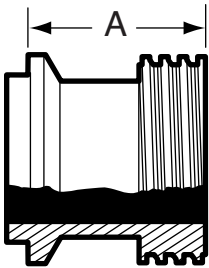
Size Tube OD	A
1	1.968
1 1/2	2.250
2	2.250
2 1/2	2.562
3	2.687
4	2.812

## E17-14I-14MP - ADAPTER MALE X CLAMP



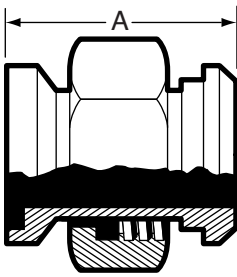
Size Tube OD	A
1	1.093
1 1/2	1.250
2	1.250
2 1/2	1.312
3	1.406
4	1.656
6	1.687

## E17-14I-15 - ADAPTER MALE X ACME THREAD



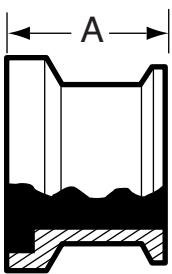
Size Tube OD	A
1	1.031
1 1/2	1.468
2	1.500
2 1/2	1.687
3	1.812
4	2.062

## E17-15I-14 - ADAPTER FEMALE X 13H NUT



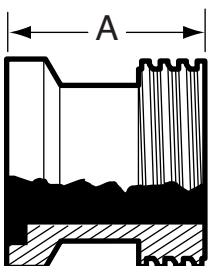
Size Tube OD	A
1	2.156
1 1/2	2.437
2	2.500
2 1/2	2.875
3	3.000
4	3.093

## E17-15I-14MP - ADAPTER FEMALE X CLAMP



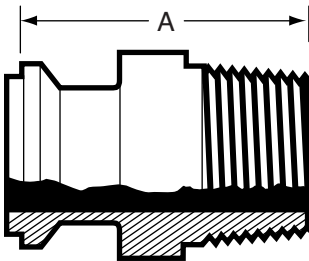
Size Tube OD	A
1	1.281
1 1/2	1.437
2	1.500
2 1/2	1.625
3	1.718
4	1.968
6	2.000

## E17-15I-15 - ADAPTER FEMALE X ACME THREAD



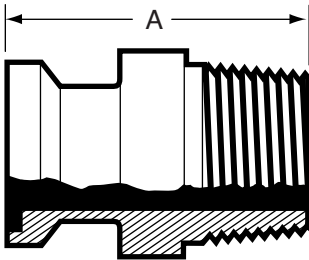
Size Tube OD	A
1	1.562
1 1/2	1.656
2	1.750
2 1/2	2.000
3	2.125
4	2.375

## E21I-14I - ADAPTER MALE X MNPT



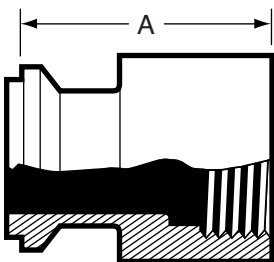
Size Tube OD	A
1	2.343
1 1/2	2.500
2	2.593
2 1/2	3.125
3	3.406
4	3.593
6	4.812

## E21I-15I - ADAPTER FEMALE X MNPT



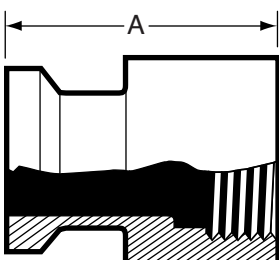
Size Tube OD	A
1	2.531
1 1/2	2.687
2	2.843
2 1/2	3.437
3	3.718
4	3.906
6	5.125

## E22I-14I - ADAPTER MALE X FNPT



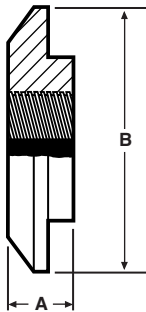
Size Tube OD	A
1	1.687
1 1/2	2.187
2	2.218
2 1/2	2.437
3	2.718
4	3.031

## E22I-15I - ADAPTER FEMALE X FNPT



Size Tube OD	A
1	1.906
1 1/2	2.375
2	2.468
2 1/2	2.781
3	3.031
4	3.343

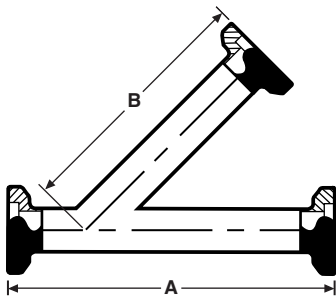
## E23BI - THERMOMETER CAP



Size Tube OD	A	B
*1	0.500	2.000
1 1/2	0.500	2.000
2	0.562	2.625
2 1/2	0.750	3.312
3	0.750	3.875
4	0.750	4.875

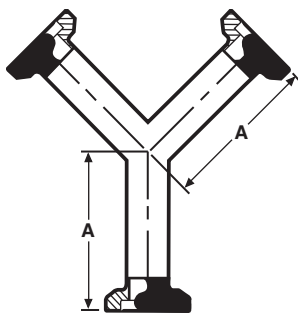
\*STD 1/2" FNPT. All others 3/4" FNPT.

## E28AI - LATERAL ALL ENDS FEMALE



Size Tube OD	A	B
1	7.562	5.781
1 1/2	9.250	7.125
2	10.687	8.156
2 1/2	12.437	9.656
3	13.187	10.093
4	15.500	12.093
6	19.125	15.625

## E28BI - TRUE Y ALL ENDS FEMALE



Size Tube OD	A
1	3.781
1 1/2	3.937
2	5.031
2 1/2	6.156
3	7.218
4	9.343
6	9.125

## E16AI-14I - MALE END CAP



Size Tube OD	A	B
1	2.000	0.500
1 1/2	2.000	0.500
2	2.625	0.562
2 1/2	3.312	0.750
3	3.875	0.750
4	4.875	0.750
6	7.500	0.875

## E16AI-15I - FEMALE END CAP



Size Tube OD	A	B
1	2.000	0.500
1 1/2	2.000	0.500
2	2.625	0.687
2 1/2	3.312	0.750
3	3.875	0.750
4	4.875	0.750
6	7.500	0.750

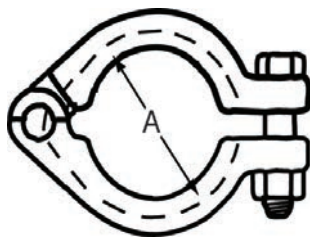
## GASKETS



Gasket Materials	Part Number
Buna N	E40IH
EPDM	E40IE
Teflon	E40IT
Viton®	E40IV
Silicone	E40IS

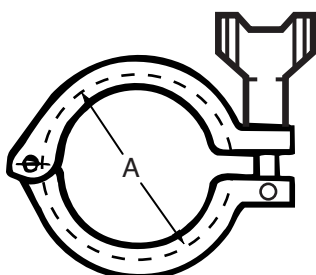
Available in 1" to 6" sizes.

## E13IU - BOLTED CLAMP



Size Tube OD	A
1	2.122
1 1/2	2.122
2	2.800
2 1/2	3.500
3	4.060
4	5.000
6	7.625

## E13IS - HEAVY DUTY CLAMP



Size Tube OD	A
1	2.122
1 1/2	2.122
2	2.800
2 1/2	3.500
3	4.060
4	5.000
6	7.625

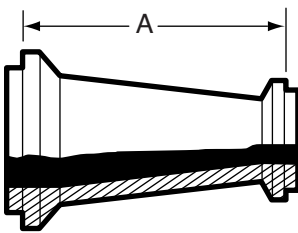


### \*PSI SERVICE RATINGS FOR SANITARY STAINLESS STEEL CLAMPS

Size Tube OD	E13IU		E13IS	
	@70°F	@250°F	@70°F	@250°F
1" & 1 1/2"	500	250	500	250
2"	450	250	450	250
2 1/2"	400	200	400	200
3"	350	150	350	150
4"	200	125	200	125
6"	150	75	150	75

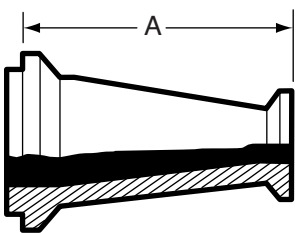
\*Service ratings are based upon hydrostatic tests using Standard Molded Buna-N gasket material with proper expansion of ferrules, joint assembly, and the absence of shock pressure. All ratings systems are dependent upon related components in the system and proper installation.

### E31-14I - CONCENTRIC REDUCER MALE X MALE



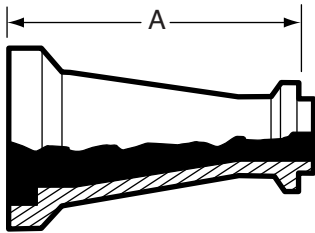
Size Tube OD	A
1 1/2 x 1	3.343
2 x 1	5.375
2 x 1 1/2	3.500
2 1/2 x 1 1/2	5.593
2 1/2 x 2	3.562
3 x 1 1/2	7.656
3 x 2	5.625
3 x 2 1/2	3.750
4 x 2	9.812
4 x 2 1/2	7.875
4 x 3	5.937
6 x 3	7.218
6 x 4	7.343

### E31-14I-15I - CONCENTRIC REDUCER MALE X FEMALE



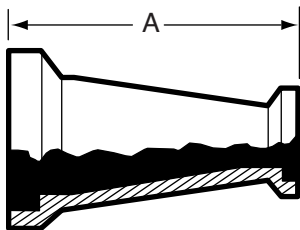
Size Tube OD	A
1 1/2 x 1	3.531
2 x 1	5.562
2 x 1 1/2	3.718
2 1/2 x 1 1/2	5.781
2 1/2 x 2	4.875
3 x 1 1/2	7.843
3 x 2	5.937
3 x 2 1/2	4.062
4 x 2	10.062
4 x 2 1/2	8.187
4 x 3	6.250
6 x 3	7.406
6 x 4	7.875

## E311-151-14I - CONCENTRIC REDUCER FEMALE X MALE



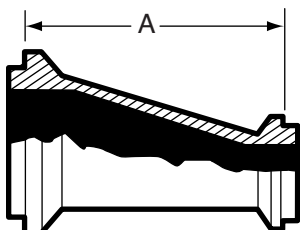
Size Tube OD	A
1 1/2 x 1	3.531
2 x 1	5.625
2 x 1 1/2	3.781
2 1/2 x 1 1/2	5.906
2 1/2 x 2	3.937
3 x 1 1/2	7.968
3 x 2	6.000
3 x 2 1/2	4.062
4 x 2	10.125
4 x 2 1/2	8.187
4 x 3	6.250
6 x 3	7.531
6 x 4	7.656

## E311-15I - CONCENTRIC REDUCER BOTH ENDS FEMALE



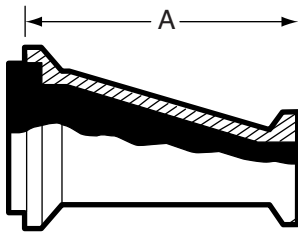
Size Tube OD	A
1 1/2 x 1	3.718
2 x 1	5.812
2 x 1 1/2	3.968
2 1/2 x 1 1/2	6.093
2 1/2 x 2	4.187
3 x 1 1/2	8.156
3 x 2	6.250
3 x 2 1/2	4.375
4 x 2	10.375
4 x 2 1/2	8.500
4 x 3	6.562
6 x 3	7.843
6 x 4	7.968

## E321-14I - ECCENTRIC REDUCER MALE X MALE



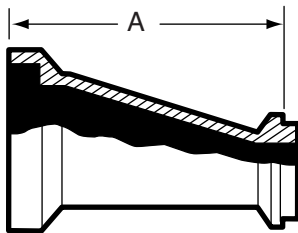
Size Tube OD	A
1 1/2 x 1	3.343
2 x 1	5.375
2 x 1 1/2	3.500
2 1/2 x 1 1/2	5.593
2 1/2 x 2	3.562
3 x 1 1/2	7.656
3 x 2	5.625
3 x 2 1/2	3.750
4 x 2	9.812
4 x 2 1/2	7.875
4 x 3	5.937
6 x 3	7.218
6 x 4	7.968

## E32I-14I-15I - ECCENTRIC REDUCER MALE X FEMALE



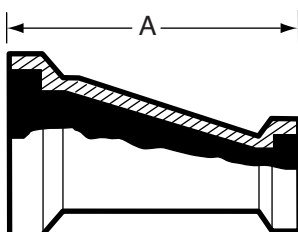
Size Tube OD	A
1 1/2 x 1	3.531
2 x 1	5.562
2 x 1 1/2	3.718
2 1/2 x 1 1/2	5.781
2 1/2 x 2	4.875
3 x 1 1/2	7.843
3 x 2	5.937
3 x 2 1/2	4.062
4 x 2	10.062
4 x 2 1/2	8.187
4 x 3	6.250
6 x 3	7.406
6 x 4	7.875

## E32I-15I-14I - ECCENTRIC REDUCER FEMALE X MALE



Size Tube OD	A
1 1/2 x 1	3.531
2 x 1	5.625
2 x 1 1/2	3.781
2 1/2 x 1 1/2	5.906
2 1/2 x 2	3.937
3 x 1 1/2	7.968
3 x 2	6.000
3 x 2 1/2	4.062
4 x 2	10.125
4 x 2 1/2	8.187
4 x 3	6.250
6 x 3	7.531
6 x 4	7.656

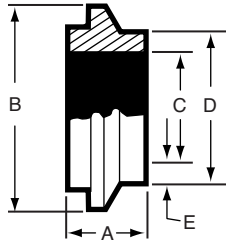
## E32I-15I - ECCENTRIC REDUCER BOTH ENDS FEMALE



Size Tube OD	A
1 1/2 x 1	3.718
2 x 1	5.812
2 x 1 1/2	3.968
2 1/2 x 1 1/2	6.093
2 1/2 x 2	4.187
3 x 1 1/2	8.156
3 x 2	6.250
3 x 2 1/2	4.375
4 x 2	10.375
4 x 2 1/2	8.500
4 x 3	6.585
6 x 3	7.687
6 x 4	8.000

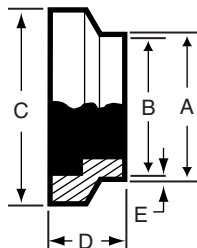
### SCHEDULE 5 - (T316L)

#### E14WI-5 - SHORT MALE WELDING FERRULE



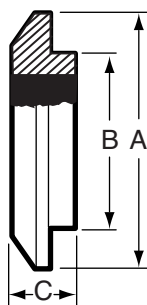
Size Pipe	A	B	C	D	E
1	0.945	2.000	1.185	1.315	0.065
1 1/2	1.024	2.648	1.770	1.900	0.065
2	1.142	3.317	2.245	2.375	0.065
2 1/2	1.220	3.868	2.709	2.875	0.083
3	1.343	4.882	3.334	3.500	0.083
4	1.343	5.882	4.334	4.500	0.083

#### E15WI-5 - SHORT FEMALE WELDING FERRULE



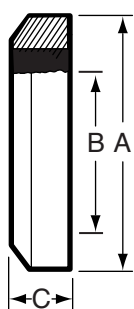
Size Pipe	A	B	C	D	E
1	1.315	1.185	2.000	0.945	0.065
1 1/2	1.900	1.770	2.648	1.024	0.065
2	2.375	2.245	3.317	1.142	0.065
2 1/2	2.875	2.709	3.868	1.220	0.083
3	3.500	3.334	4.882	1.343	0.083
4	4.500	4.334	5.882	1.343	0.083

#### E16AI-14I-5 - MALE END CAP



Size Pipe	A	B	C
1	2.000	1.751	0.500
1 1/2	2.648	2.244	0.585
2	3.317	2.746	0.750
2 1/2	3.868	3.307	0.750
3	4.882	4.295	0.750
4	5.882	5.295	0.750

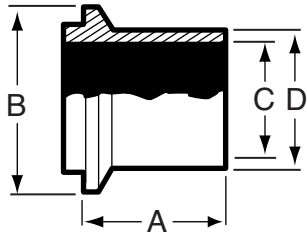
#### E16AI-15I-5 - FEMALE END CAP



Size Pipe	A	B	C
1	2.000	1.772	0.500
1 1/2	2.684	2.264	0.687
2	3.317	2.766	0.750
2 1/2	3.868	3.327	0.750
3	4.882	4.311	0.750
4	5.882	5.311	0.750

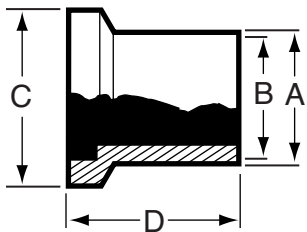
### SCHEDULE 5 - (T316L)

#### E14WLI-5 - LONG MALE WELDING FERRULE



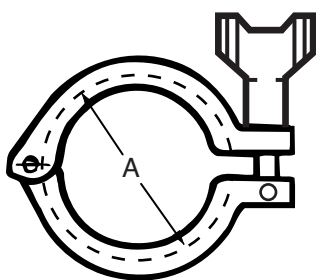
Size Pipe	A	B	C	D
1	1.562	2.000	1.185	1.315
1 1/2	1.843	2.648	1.770	1.900
2	2.062	3.317	2.245	2.375
2 1/2	1.562	3.868	2.709	2.875
3	1.562	4.882	3.334	3.500
4	1.562	5.882	4.334	4.500

#### E15WLI-5 - LONG FEMALE WELDING FERRULE



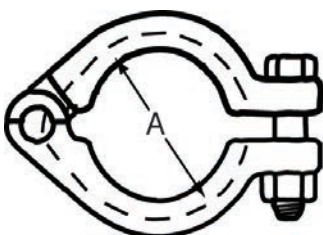
Size Pipe	A	B	C	D
1	1.315	1.185	2.000	1.750
1 1/2	1.900	1.770	2.648	2.031
2	2.375	2.245	3.317	2.312
2 1/2	2.875	2.370	3.868	2.500
3	3.500	2.870	4.882	2.687
4	4.500	3.834	5.882	3.000

#### E13IS-5 - HEAVY DUTY CLAMP - T304



Size Pipe	A
1	2.122
1 1/2	2.800
2	3.500
2 1/2	4.060
3	5.000
4	6.130

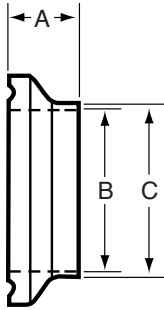
#### E13IU-5 - CLAMP BOLTED - T304



Size Pipe	A
1	2.122
1 1/2	2.800
2	3.500
2 1/2	4.060
3	5.000
4	6.130

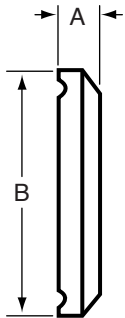
## EQ - LINE

### E14WQ-6L (T316L Material Only)



Size Tube OD	A	B	C
1	0.531	0.870	1.000
1 1/2	0.563	1.370	1.500
2	0.813	1.870	2.000
2 1/2	0.938	2.370	2.500
3	0.938	2.870	3.000
4	1.000	3.834	4.000

### E16AQ-14Q



Size Tube OD	A	B
1	0.313	2.000
1 1/2	0.313	2.000
2	0.438	2.648
2 1/2	0.500	3.313
3	0.500	3.870
4	0.625	4.870



## UNPOLISHED TUBE OD FITTINGS....

Unpolished Tube OD Weld Fittings are used in a wide variety of industrial applications where sanitary finishes are not generally required. VNE's tumbled finish presents a consistent uniform appearance.

VNE's Unpolished Weld Fittings are offered in nominal tube sizes 1/2" through 8" in T304 and T316L materials. Uniform wall thickness for 1/2" through 3" sizes measure .065 (16 ga). In 4" size, wall thickness measure .083 (14 ga), 6" and 8" .109 (12 ga).

## TUBE OD FITTING SPECIFICATIONS....

**Size Range:** 1/2" OD through 8" OD

**Materials:** T304  
T316L

**Finish:** Unpolished - Tumbled

## ORDERING SPECIFICATIONS....

**Specify:**

- Quantity
- Product description or Part No.
- Size
- Material Type
- Polish Requirements

## LIMITED WARRANTY....

VNE Corporation products are warranted to be free from defects in material and workmanship for a period of one year from the date of shipment. Any product that proves to be defective shall be repaired or replaced at the option of VNE, providing it has been used as recommended and in strict accordance with recognized piping practices, and that has not been subject to extraordinary service, such as encountered under severe corrosive or abrasive conditions.

VNE makes no warranties, express or implied, other than those listed above.

VNE shall not be liable for any consequential, indirect, incidental or contingent damages.

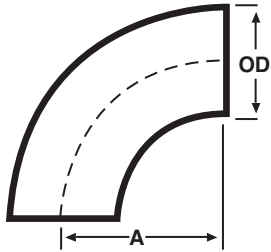






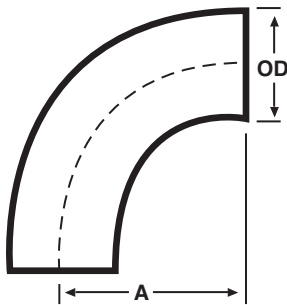
# Unpolished Tube OD Fittings

## V2WC - 90° ELBOW LESS TANGENTS



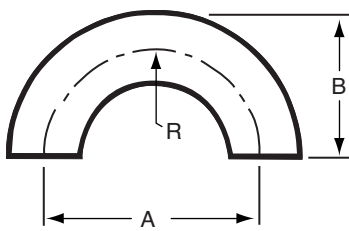
Size Tube OD	A	Nom. Wall
1/2	0.750	0.065
3/4	1.125	0.065
1	1.500	0.065
1 1/4	1.875	0.065
1 1/2	2.250	0.065
2	3.000	0.065
2 1/2	3.750	0.065
3	4.500	0.065
4	6.000	0.083
6	9.000	0.109
8	12.000	0.109

## V2S - 90° ELBOW WITH TANGENTS



Size Tube OD	A	Nom. Wall
1	2.062	0.065
1 1/2	2.937	0.065
2	4.062	0.065
2 1/2	5.187	0.065
3	6.312	0.065
4	8.312	0.083

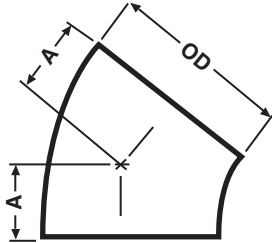
## V2WU - 180° U BEND



Size Tube OD	A	B	C	R	Nom. Wall
1/2	1.500	1.000	0.500	0.750	0.065
3/4	2.250	1.500	0.750	1.125	0.065
1	3.000	2.000	1.000	1.500	0.065
1 1/4	3.750	2.500	1.250	1.875	0.065
1 1/2	4.500	3.000	1.500	2.250	0.065
2	6.000	4.000	2.000	3.000	0.065
2 1/2	7.500	5.000	2.500	3.750	0.065
3	9.000	6.000	3.000	4.500	0.065
4	12.000	8.000	4.000	6.000	0.083
6	18.000	12.000	6.000	9.000	0.109

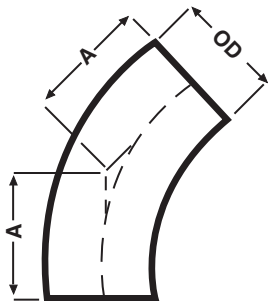
# Unpolished Tube OD Fittings

## V2WK - 45° ELBOW LESS TANGENTS



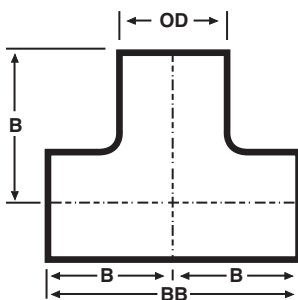
Size Tube OD	A	Nom. Wall
1/2	0.312	0.065
3/4	0.468	0.065
1	0.625	0.065
1 1/4	0.781	0.065
1 1/2	0.937	0.065
2	1.250	0.065
2 1/2	1.562	0.065
3	1.875	0.065
4	2.500	0.083
6	3.750	0.109
8	5.000	0.109

## V2KS - 45° ELBOW WITH TANGENTS



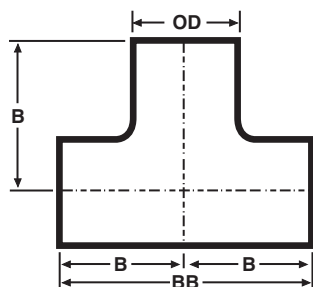
Size Tube OD	A	Nom. Wall
1	1.187	0.065
1 1/2	1.625	0.065
2	2.312	0.065
2 1/2	3.000	0.065
3	3.687	0.065
4	4.812	0.083

## V7W - LONG TEE



Size Tube OD	B	BB	Nom. Wall
1/2	CONTACT VNE		
3/4	CONTACT VNE		
1	1.875	3.750	0.065
1 1/2	2.250	4.500	0.065
1 1/4	2.250	4.500	0.065
2	3.000	6.000	0.065
2 1/2	3.000	6.000	0.065
3	3.250	6.500	0.065
4	3.875	7.750	0.083
6	5.625	11.250	0.109
8	7.000	14.000	0.109

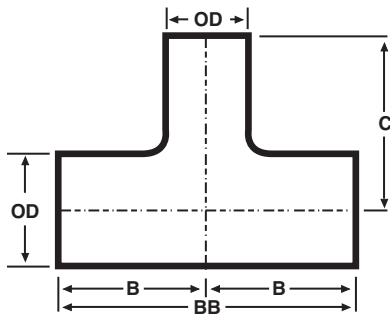
## V7WWW - SHORT TEE



Size Tube OD	B	BB	Nom. Wall
1	1.125	2.250	0.065
1 1/2	1.656	3.312	0.065
2	2.062	4.125	0.065
2 1/2	2.343	4.687	0.065
3	2.593	5.187	0.065
4	3.430	6.875	0.083
6	5.625	11.250	0.109
8	7.000	14.000	0.109

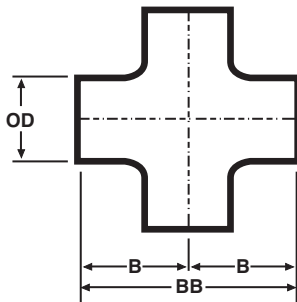
# Unpolished Tube OD Fittings

## V7WR - REDUCING TEE



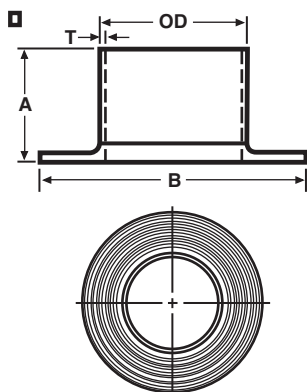
Size Tube OD	BB	C	B	Nom. Wall Run
3/4 x 1/2	CONTACT VNE			0.065
1 x 1/2				0.065
1 x 3/4				0.065
1 1/2 x 1/2				0.065
1 1/2 x 3/4				0.065
1 1/2 x 1	4.500	2.125	2.250	0.065
2 x 1	6.000	2.375	3.000	0.065
2 x 1 1/2	6.000	2.500	3.000	0.065
2 1/2 x 1 1/2	6.000	2.750	3.000	0.065
2 1/2 x 2	6.000	3.250	3.000	0.065
3 x 1 1/2	6.480	3.000	3.250	0.065
3 x 2	6.480	3.500	3.250	0.065
3 x 2 1/2	6.480	3.250	3.250	0.065
4 x 2	7.750	4.000	3.875	0.083
4 x 2 1/2	7.750	3.750	3.875	0.083
4 x 3	7.750	3.750	3.875	0.083
6 x 2	11.250	5.625	5.625	0.109
6 x 3	11.250	5.625	5.625	0.109
6 x 4	11.250	5.625	5.625	0.109

## V9W - CROSS



Size Tube OD	B	BB	Nom. Wall
1/2	CONTACT VNE		0.065
3/4			0.065
1	1.875	3.750	0.065
1 1/2	2.250	4.500	0.065
1 1/4	2.250	4.500	0.065
2	3.000	6.000	0.065
2 1/2	3.000	6.000	0.065
3	3.250	6.500	0.065
4	3.875	7.750	0.083
6	5.625	11.250	0.109

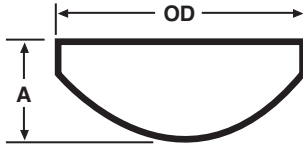
## V14WA - TYPE A STUB END WITH GROOVES



Size Tube OD	A	B	Nom. Wall ( T )
1/2	1.625	1.625	0.065
3/4	1.375	1.687	0.065
1	1.625	2.000	0.065
1 1/4	1.375	2.500	0.065
1 1/2	1.750	2.875	0.065
2	1.500	3.625	0.065
2 1/2	2.000	4.125	0.065
3	2.250	5.000	0.065
4	2.625	6.187	0.083
6	3.000	8.500	0.109

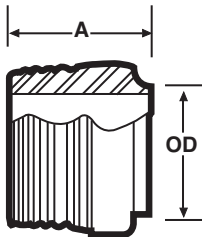
# Unpolished Tube OD Fittings

## V16W - WELD CAP



Size Tube OD	A	Nom. Wall
1/2	0.250	0.065
3/4	0.312	0.065
1	0.375	0.065
1 1/4	0.500	0.065
1 1/2	0.562	0.065
2	0.750	0.065
2 1/2	1.000	0.065
3	1.250	0.065
4	1.500	0.083
6	Contact VNE for dimensions	
8		

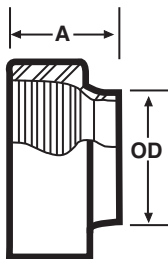
## 19WB / \*19WBF - MALE NPT X WELD ADAPTER



Size Tube OD	A	Nom. Wall
1/2	1.625	0.065
3/4	1.625	0.065
1	1.750	0.065
1 1/4	1.750	0.065
1 1/2	1.750	0.065
2	1.812	0.065
2 1/2	2.312	0.065
3	2.500	0.065
4	2.562	0.083
6	4.000	0.109

\*19WBF - 1 inch through 4 inch are supplied with wrench flats

## 22WB / \*22WBF - FEMALE NPT X WELD ADAPTER

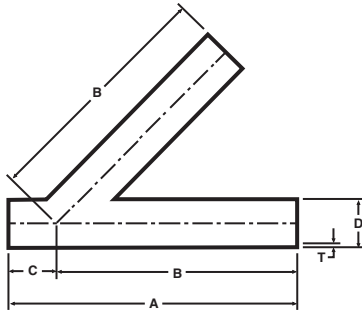


Size Tube OD	A	Nom. Wall
1/2	1.125	0.065
3/4	1.125	0.065
1	1.125	0.065
1 1/4	1.437	0.065
1 1/2	1.437	0.065
2	1.437	0.065
2 1/2	1.625	0.065
3	1.812	0.065
4	2.000	0.083

\*22WBF - 1 inch through 4 inch are supplied with wrench flats

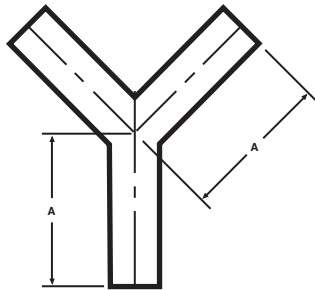
# Unpolished Tube OD Fittings

## V28WA - 45° LATERAL



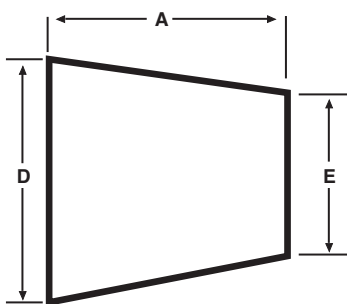
Size Tube OD	A	B	C	D	Nom. Wall ( T )
1	6.000	5.000	1.000	1.000	0.065
1 1/2	7.375	6.187	1.187	1.500	0.065
2	8.625	7.125	1.500	2.000	0.065
2 1/2	10.125	8.500	1.625	2.500	0.065
3	10.750	8.875	1.875	3.000	0.065
4	12.812	10.750	2.062	4.000	0.083
6	18.000	14.500	3.500	6.000	0.109

## V28WB - TRUE Y



Size Tube OD	A
1	3.000
1 1/2	3.000
2	4.000
2 1/2	5.000
3	6.000
4	8.000
6	8.000

## V31W - CONCENTRIC REDUCER

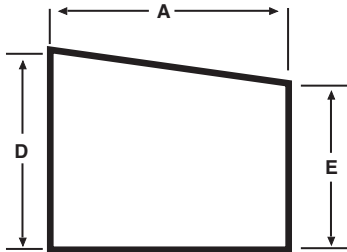


Size Tube OD D x E	A	Nom. Wall
3/4 x 1/2	*	0.065
1 x 1/2	*	0.065
1 x 3/4	*	0.065
1 1/2 x 1/2	*	0.065
1 1/2 x 3/4	*	0.065
1 1/2 x 1	2.000	0.065
1 1/2 x 1 1/4	1.000	0.065
2 x 1	4.000	0.065
2 x 1 1/4	3.000	0.065
2 x 1 1/2	2.000	0.065
2 1/2 x 1 1/2	4.000	0.065
2 1/2 x 2	2.000	0.065
3 x 1 1/2	6.000	0.065
3 x 2	4.000	0.065
3 x 2 1/2	2.000	0.065
4 x 2	8.000	0.083 x 0.065
4 x 2 1/2	6.000	0.083 x 0.065
4 x 3	4.000	0.083 x 0.065
6 x 3	5.500	0.109 x 0.083
6 x 4	5.500	0.109 x 0.083

\* Contact VNE for Exact Dimensions.

# Unpolished Tube OD Fittings

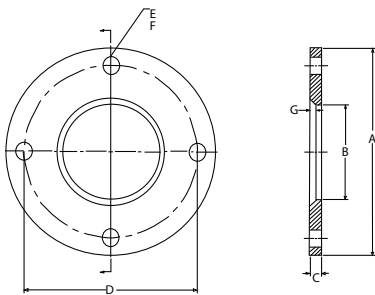
## V32W - ECCENTRIC REDUCER



Size Tube OD D x E	A	Nom. Wall
3/4 x 1/2	*	0.065
1 x 1/2	*	0.065
1 x 3/4	*	0.065
1 1/2 x 1/2	*	0.065
1 1/2 x 3/4	*	0.065
1 1/2 x 1	2.000	0.065
1 1/2 x 1 1/4	1.000	0.065
2 x 1	4.000	0.065
2 x 1 1/4	3.000	0.065
2 x 1 1/2	2.000	0.065
2 1/2 x 1 1/2	4.000	0.065
2 1/2 x 2	2.000	0.065
3 x 1 1/2	6.000	0.065
3 x 2	4.000	0.065
3 x 2 1/2	2.000	0.065
4 x 2	8.000	0.083 x 0.065
4 x 2 1/2	6.000	0.083 x 0.065
4 x 3	4.000	0.083 x 0.065
6 x 3	5.500	0.109 x 0.083
6 x 4	5.500	0.109 x 0.083

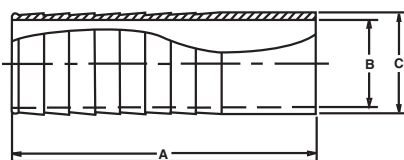
\* Contact VNE for Exact Dimensions.

## E38SL - SLIP ON FLANGE



Size Tube OD	A	B	C	D	E	F	G
1/2	3.500	0.56	0.375	2.375	0.625	4.000	0.188
3/4	3.875	0.81	0.375	2.075	0.625	4.000	0.188
1	4.025	1.06	0.375	3.125	0.625	4.000	0.188
1 1/2	5.000	1.56	0.375	3.875	0.625	4.000	0.188
2	6.000	2.06	0.4375	4.075	0.750	4.000	0.219
2 1/2	7.000	2.56	0.4375	5.500	0.750	4.000	0.219
3	7.500	3.06	0.500	6.000	0.750	4.000	0.250
4	9.000	4.06	0.500	7.500	0.750	8.000	0.250
6	11.00	6.06	0.813	9.500	0.875	8.000	0.250

## V14RH - 6L B/W Rubber Hose Barb Blank #1



Size Tube OD	A	B	C
1/4	1.500	0.152	0.250
5/16	1.500	0.182	0.312
3/8	1.500	0.250	0.375
1/2	1.500	0.375	0.500
5/8	1.500	0.495	0.625
3/4	1.500	0.620	0.750
1	3.000	0.870	1.000
1 1/4	3.000	1.120	1.250
1 1/2	3.000	1.370	1.500
2	3.000	1.870	2.000
2 1/2	3.000	2.370	2.500
3	3.000	2.870	3.000



### European Din Connections....

VNE's European Din Connections are available in Inch-Size Tube O.D. Weld Neck. Now inch size tubing can be utilized on projects requiring Din Connections, where in the past metric tubing had to be purchased.

VNE stocks welding ferrules - both male (threaded) and female (plain) - along with the standard DIN nut and gasket to complete the union in T304. T316 ferrules and other metric fittings are available upon request.

### EUROPEAN DIN SPECIFICATIONS....

**Product:** Din Connection x Din Weld Connection  
Fully Metric Din Fittings

**Size Range:** Din 10 - Din 100

**Materials:** T304 & T316

**Finish:** #7 ID / OD Polish

### ORDERING SPECIFICATIONS....

25-KURZ-NW10  
(Din male threaded ferrule size 10, T304)

35-KURZ-6-NW10  
(Din female plain ferrule size 10, T316)

### EUROPEAN DIN SPECIFICATIONS....

**Product:** Din Connection X Inch Weld  
Connection

**Size Range:** 1" - 4"

**Materials:** T304 & T316

**Finish:** #7 ID / OD Polish

### ORDERING SPECIFICATIONS....

2SRW-25 X 1.0  
(Din male threaded ferrule x size 1" weld con-  
nection, T304)

3SRW-6-25X1.0  
(Din female plain ferrule x size 1" weld con-  
nection, T316)



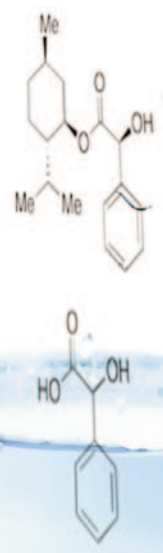
1 H Hydrogen	
3 Li Lithium	4 Be Beryllium
11 Na Sodium	12 Mg Magnesium
19 K Potassium	
37 Rb Rubidium	38 Sr Strontium
56 Ba Barium	
88 Ra Radium	

24 Cr Chromium	25 Mn Manganese	26 Fe Iron
42 Mo Molybdenum	43 Tc Technetium	44 Ru Ruthenium
74 W Tungsten	75 Re Rhenium	76 Os Osmium
106 Sg Seaborgium	107 Bh Bohrium	108 Hs Hassium

60 Nd Neodymium	61 Pm Promethium	62 Sm Samarium
-----------------------	------------------------	----------------------

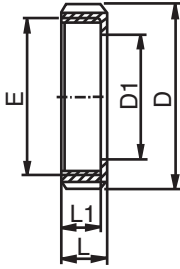
101 Rg Roentgenium	102 Cn Copernicium
--------------------------	--------------------------

65 Tb Terbium	66 Dy Dysprosium	67 Ho Holmium	68 Er Erbium
96 Cm Curium	97 Bk Berkelium	98 Cf Californium	99 Es Einsteinium



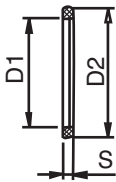


### 4-NUT-NW-(SIZE) (304 ONLY)



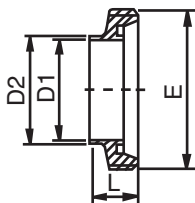
Size (DN)	D	D1	E	L	L1
10	38	19	Rd 28 x 1/8"	18	15
15	44	25	Rd 34 x 1/8"	18	15
20	54	31	Rd x 44 x 1/6"	20	17
25	63	36	Rd 52 x 1/6"	21	18
32	70	42	Rd 58 x 1/6"	21	18
40	78	49	Rd 65 x 1/6"	21	18
50	92	62	Rd 78 x 1/6"	22	19
65	112	80	Rd 95 x 1/6"	25	21
75/3	120	86.5	Rd 104 x 1/6"	29	25
80	127	94	Rd 110 x 1/4"	29	25
100	148	115	Rd 130 x 1/4"	31	26
125	178	138	Rd 160 x 1/4"	35	30
150	210	164	Rd 190 x 1/4"	40	34
200	260	215	Rd 240 x 1/4"	44	38

### 5-RING NW (SIZE) BUNA, 5A-RING NW (SIZE) EPDM, 5B-RING NW (SIZE) SILICONE



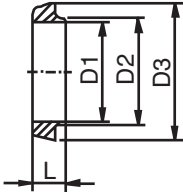
Size (DN)	D1	D2	S
10	12	20	4.5
15	18	26	4.5
20	23	33	4.5
25	30	40	5
32	36	46	5
40	42	52	5
50	54	64	5
65	71	81	5
75/3	78	88	5
80	85	95	5
100	104	114	6
125	130	142	7
150	155	167	7

### 2S-KURZ-NW(SIZE) DIN MALE THREAD X DIN WELD FERRULE T304 / T316



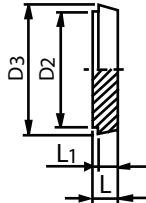
Size (DN)	D1	D2	E	L
10	10	13	Rd 28 x 1/8"	17
15	16	19	Rd 34 x 1/8"	17
20	20	23	Rd 44 x 1/6"	19
25	26	29	Rd 52 x 1/6"	22
32	32	35	Rd 58 x 1/6"	22
40	38	41	Rd 65 x 1/6"	22
50	50	53	Rd 78 x 1/6"	23
65	66	70	Rd 95 x 1/6"	25
80	81	85	Rd 110 x 1/4"	25
100	100	104	Rd 130 x 1/4"	30
125	125	129	Rd 160 x 1/4"	35.5
150	150	154	Rd 190 x 1/4"	40

### 3S-KURZ-NW(SIZE) DIN FEMALE X DIN WELD FERRULE T304 / T316



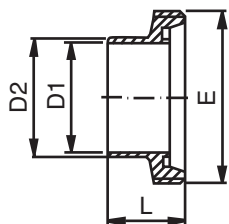
Size (DN)	D1	D2	D3	L
10	10	13	22.5	13
15	16	19	28.5	13
20	20	23	36.5	13
25	26	29	44	15
32	32	35	50	15
40	38	41	56	15
50	50	53	68.5	16
65	66	70	86	17
80	81	85	100	17
100	100	104	121	20
125	125	129	150	23.5
150	150	154	176	27

### 74-CAP NW(SIZE) (304 & 316)



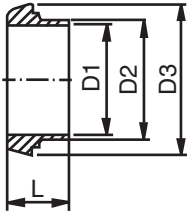
Size (DN)	D2	D3	L	L1
10	18.8	22.5	9.5	3.5
15	24.8	28.5	9.5	3.5
20	30.8	36.5	11.5	3.5
25	35.8	44	13.5	3.5
32	41.8	50	13.5	3.5
40	48.8	56	13.5	3.5
50	61.8	68.5	14.5	3.5
65	79.8	86	16.5	4.5
80	93.8	100	16.5	4.5
100	114.8	121	20.5	5.5
125	137.8	150	22.5	5.5
150	163.8	176	24.5	6.5

### 2SRW (SIZE) DIN MALE THREAD X INCH WELD FERRULES T304 / T316



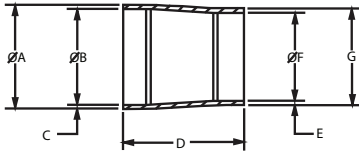
Size (DN)	D1	D2	E	L
25 x 1.0	22.9	1.000	Rd 52 x 1/6"	29
40 x 1.5	35.1	1.500	Rd 65 x 1/6"	33
50 x 2.0	47.8	2.000	Rd 78 x 1/6"	35
65 x 2.5	60.5	2.500	Rd 95 x 1/6"	40
80 x 3.0	Contact VNE for dimensions			
100 x 4.0	97.6	4.000	Rd 130 x 1/4"	54

### 3SRW (SIZE) DIN FEMALE X INCH WELD FERRULES T304 / T316



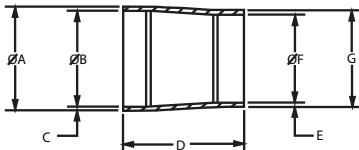
Size (DN)	D1	D2	D3	L
25 x 1.0	22.9	1.000	44	22
40 x 1.5	35.1	1.500	56	26
50 x 2.0	47.8	2.000	68.5	28
65 x 2.5	60.5	2.500	86	32
80 x 3.0	Contact VNE for dimensions			
100 x 4.0	97.6	4.000	121	44

### E17WW6LDN (SIZE) X (SIZE) DIN 11866 / 11850 SERIES



Size	A	B	C	D	E	F	G
DN 4 X .25	0.250	0.180	0.035	1.000	1 MM	4 MM	6 MM
DN 6 X .375	0.375	0.305	0.035	1.000	1 MM	6 MM	8 MM
DN 8 X .375	10 MM	8 MM	1 MM	1.000	0.035	0.305	0.375
DN 10 X .5	13 MM	10 MM	1.5 MM	1.000	0.065	0.370	0.500
DN 15 X .75	0.750	0.620	0.065	1.500	1.5 MM	16 MM	19 MM
DN 20 X 1.0	1.000	0.870	0.065	1.500	1.5 MM	20 MM	23 MM
DN 25 X 1.0	29MM	26 MM	1.5 MM	1.500	0.065	0.870	1.000
DN 32 X 1.5	1.500	1.370	0.065	1.500	1.5 MM	32 MM	35 MM
DN 40 X 1.5	41 MM	38 MM	1.5 MM	2.000	0.065	1.370	1.500
DN 50 X 2.0	53 MM	50 MM	1.5 MM	2.000	0.065	1.870	2.000
DN 65 X 2.5	70 MM	66 MM	2 MM	2.000	0.065	2.370	2.500
DN 80 X 3.0	85 MM	81 MM	2 MM	2.000	0.065	2.870	3.000
DN 100 X 4.0	104 MM	100 MM	2 MM	2.000	0.083	3.834	4.000

### E17WW6LISO (SIZE) X (SIZE) ISO 1127 SERIES



Size	A	B	C	D	E	F	G
ISO 8 X .5	13.5 MM	10.3 MM	1.6 MM	1.000	0.065	0.370	0.500
ISO 10 X .75	0.750	0.620	0.065	1.000	1.6 MM	14 MM	17.2 MM
ISO 15 X 1.0	1.000	0.870	0.065	1.000	1.6 MM	18.1 MM	21.3 MM
ISO 20 X 1.0	26.9 MM	23.7 MM	1.6 MM	1.000	0.065	0.870	1.000
ISO 25 X 1.5	1.500	1.370	0.065	1.500	1.6 MM	29.7 MM	33.7 MM
ISO 32 X 1.5	42.4 MM	38.4 MM	2 MM	1.500	0.065	1.370	1.500
ISO 40 X 2.0	2.000	1.870	0.065	1.500	2 MM	44.3 MM	48.3 MM
ISO 50 X 2.5	2.500	2.370	0.065	1.500	2 MM	56.3 MM	60.3 MM
ISO 65/2.0 X 3.0	3.000	2.870	0.065	2.000	2 MM	72.1 MM	76.1 MM
ISO 65/2.3 X 3.0	3.000	2.870	0.065	2.000	2.3 MM	71.5 MM	76.1 MM
ISO 80 X 3.0	3.000	2.870	0.065	2.000	2.3 MM	84.3 MM	88.9 MM
ISO 100/2.3 X 3.0	114.3 MM	109.7 MM	2.3 MM	2.000	0.083	3.834	4.000
ISO 100/2.6 X 3.0	114.3 MM	109.1 MM	2.6 MM	2.000	0.083	3.834	4.000



## Pipe Hangers....

Pipe Hangers are available in Tube OD sizes. All hangers are hexagonal shape with either rubber grommets or PVC inserts. Hangers are also available with a 3/8" coupling.

Other tube and pipe configurations are available upon request. Please contact VNE for dimensions.

## PIPE HANGER SPECIFICATIONS....

**Product:** Tube OD Piping Hangers

**Size Range:** 1/2" through 6" sizes

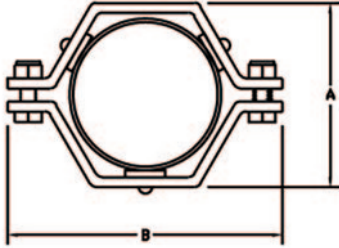
**Materials:** T304 - Hangers  
Rubber / Viton - Grommets  
PVC - Sleeve insert

## ORDERING SPECIFICATIONS....

**Specify:**

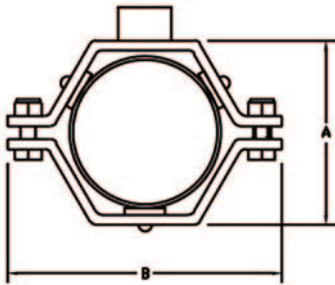
- Quantity
- Product description or Part No.
- Size
- Material Type

### E24 Tube size S.S. Hex Hanger



Size Tube OD	A	B
1/2	2 1/8	3 3/4
3/4	2 1/8	3 3/4
1	2 1/8	3 5/8
1 1/2	2 1/8	3 5/8
2	2 5/8	4 7/16
2 1/2	3	5
3	3 5/8	5 5/8
4	4 9/16	6 3/4
6	6 5/8	9

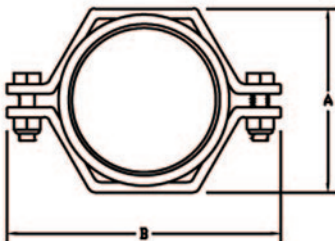
### E24C Tube size S.S. Hex Hanger with 3/8" Female NPT Pipe Coupling



Size Tube OD	A	B
1/2	2 1/8	3 5/8
3/4	2 1/8	3 5/8
1	2 1/8	3 5/8
1 1/2	2 1/8	3 5/8
2	2 5/8	4 5/16
2 1/2	3 1/8	4 7/8
3	3 5/8	5 3/8
4	4 3/4	6 9/16
6	6 5/8	9

\* Also available with 3/8" threaded rod coupling

### E24PVC Tube size Polypropylene S.S. Hex Hanger



Size Tube OD	A	B
1/2	1	2 1/2
3/4	1 1/4	3
1	1 1/2	2 3/4
1 1/2	2 1/16	3 3/4
2	2 5/8	4 1/2
2 1/2	3 1/8	5
3	3 5/8	5 3/4
4	4 5/8	6 3/4
6	6 5/8	9 1/4

### Modern Manufacturing Facility

We are committed to having the shortest lead times in the industry, In doing so we have expanded our manufacturing facility.



### State of the art machinery

With the most precise and state of the art machinery, VNE is committed to manufacture quality speciality products in the most efficient manner possible.



### Experienced People

VNE recognizes that even with our modern facility and state of the art machinery, experienced people are the most valuable asset we have to offer. Our craftsmanship provided the key to a quality product with a fast turnaround at a competitive price.

### Welding

Custom fabrications utilizing ASME certified welders and qualified procedures.

### Quality Specialty Products

VNE can manufacture products to your specific requirements for the Food, Dairy, Beverage, Pharmaceutical and many other industries.





## BUTTERFLY VALVES

Butterfly Valves are available in Manual, Air Actuated, or Air Actuated with two Micro switches and a Solenoid Valve. Clamp or Weld ends are standard. Other connections are available upon request.

Available seat materials include Silicone, Viton®, and EPDM. Size range from 1" through 6". All products contact surfaces are available in either T304 or T316 stainless steel.



## CHECK VALVES

Check valves are widely used for both sanitary and industrial applications to prevent backflow of product.

VNE's ball check valves are designed to allow full product flow during processing. Once the product flow stops the ball rolls back to seat at inlet, preventing back flow. Ball Check Valves are commonly used with liquid products.

VNE's spring check valves are designed to assist closure pressure to create a positive shutoff. They are commonly used with liquid products.

Both valves are offered with clamp and weld ends. Other connections are available upon request. Sizes range from 1/2" through 4" in T316 stainless steel. VNE's Check Valves meet 3A Sanitary requirements.

VNE's Air Blow Check Valves are designed to evacuate lines of product or CIP solution. Air Blow Check Valves are made of T316L Stainless Steel and are offered with EPDM or Viton® Elastomers.



## BALL VALVES

Ball Valves are used in a wide variety of high pressure applications. Two factors make them popular. First, a full unrestricted flow that allows no product restrictions through the valve. Second, the three piece design and the removal of a minimal number of bolts allows service to be performed without the removal of the complete valve from the line.

VNE offers TWO and THREE way ball valves made of T316 (CF8M) stainless steel. Ball Valves are available in Manual, Pneumatically Actuated, and Electrically Actuated versions. We also offer a full line of control options. Limit switches, Solenoids, and Positioners can be included with your automated valve assembly. VNE Ball Valves feature PTFE seats that are easily removed. Clamp and Weld ends are standard. Other connections are available upon request. 1/2" -4" sizes are available. VNE Ball Valves meet FDA and 3A requirements.



## PVA VALVES

PVA Valves are available in Manual, Air Activated, or Air Actuated with an electronic control head. Configurations can be shut off, Divert or Tank outlet. Connections consist of Clamp, Weld, Bevel Seat, and E-Line.

VNE's PVA Valves are made of T316L stainless steel which meet all 3A requirements and are offered in 1.0" through 3" sizes. Other connections available upon request.



## **VNE AFFILIATIONS...**

**VNE is an active member of numerous industry-related organizations and associations.**

### **3-A®**

VNE is a member of 3-A®, a voluntary organization committed to safeguarding public health and dairy product quality through a unique industry-regulated program of sanitary standards for equipment used in processing dairy foods.

### **WCMA**

#### **Wisconsin Cheese Makers Association**

VNE is a member of WCMA, a nonprofit trade association dedicated to improving the business climate for dairy companies, primarily cheese and butter manufacturing and marketing companies. Their actions also extend to the companies that supply goods and services to the dairy industry.

### **FISA**

#### **Food Industry Suppliers Association**

VNE is a member of FISA, a national association of independent distributors and major manufacturers of sanitary supplies used in the food, dairy, beverage, pharmaceutical and personal care industries.

### **ISPE**

#### **The International Society for Pharmaceutical Engineering**

VNE is a member of ISPE, a not-for-profit volunteer Society of technical professionals, who apply their practical knowledge in the regulated healthcare manufacturing industries. ISPE is committed to advancement of the education and technical efficiency of its members through forums for the exchange of ideas and practical experience.

### **ASME**

#### **American Society of Mechanical Engineers**

VNE is a member of ASME International, a nonprofit educational and technical organization serving worldwide membership of 125,000. Established to promote technical competency through quality programs and activities in the mechanical engineering fields.

### **Brewers Association**

VNE is a member of the Brewers Association, a 501(c)(6) not-for-profit trade association. The association is an organization of brewers, for brewers and by brewers. More than 3,100 U.S. brewery members and 46,000 members of the American Homebrewers Association are joined by members of the allied trade, beer wholesalers, retailers, individuals, other associate members and the Brewers Association staff to make up the Brewers Association.



# NEUMO EHRENBERG GROUP

## GLOBAL LOCATIONS



**NEUMO GmbH+Co. KG (D)**  
Tel: +49 (0) 7043 36 0  
Fax: +49 (0) 7043 36 179  
E-Mail: [info@neumo.de](mailto:info@neumo.de)  
[www.neumo.de](http://www.neumo.de)  
**GERMANY**



**VNE Corporation**  
Tel: +1 800 356 1111  
+1 608 756 4930  
Fax: +1 608 756 3643  
E-Mail: [stainless@vncorp.com](mailto:stainless@vncorp.com)  
[www.vnestainless.com](http://www.vnestainless.com)  
**U.S.A**



**EGMO Ltd.**  
Tel: +972 (0) 4 9855 176  
+972 (0) 4 9855 111  
Fax: +972 (0) 4 9855 175  
E-Mail: [salese@egmo.co.il](mailto:salese@egmo.co.il)  
[www.egmo.co.il](http://www.egmo.co.il)  
**ISRAEL**



**NEUMO-EGMO Spain S.L**  
Tel: +34 977 524 914  
Fax: +34 977 524 898  
E-Mail: [neumo-es@neumo-es.com](mailto:neumo-es@neumo-es.com)  
[www.neumo-es.com](http://www.neumo-es.com)  
**SPAIN**



**HPT Inc.**  
Tel: +845.452.1103  
+800.284.4478  
E-Mail: [sales@hptinc.com](mailto:sales@hptinc.com)  
<http://www.hptinc.com/>  
**U.S.A**



**Herrli AG**  
Tel: +41 (0) 31 750 12 11  
Fax: +41 (0) 31 750 12 00  
E-Mail: [info@herrli.net](mailto:info@herrli.net)  
[www.herrli.net](http://www.herrli.net)  
**SWITZERLAND**



**NEUMO Polska Sp. z.o.o**  
Tel: +48 (0) 46 833 4306  
Fax: +48 (0) 46 832 5626  
E-Mail: [neumo@neumo.pl](mailto:neumo@neumo.pl)  
**POLAND**



**NEUMO Turkey**  
Tel: +90 (212) 875 01 41  
Fax: +90 (212) 875 23 13  
E-Mail: [info@neumo.com.tr](mailto:info@neumo.com.tr)  
[www.neumo.com.tr](http://www.neumo.com.tr)  
**TURKEY**



**NEUMO Budapest Kft**  
Tel: +36 (1) 3174177  
+36 (1) 3185982  
Fax: +36 (1) 266 8765  
E-Mail: [neumo@neumo.hu](mailto:neumo@neumo.hu)  
[www.neumo.hu](http://www.neumo.hu)  
**HUNGARY**



**NEUMO GmbH + Co. KG**  
Tel: +84 (4) 3773 6586  
Fax: +84 (4) 3773 6587  
E-Mail: [info@neumo.com.vn](mailto:info@neumo.com.vn)  
[www.neumo.co.vn](http://www.neumo.co.vn)  
**VIETNAM**



**NEUMO-VARGUS (Shanghai)**  
Trading Co., Ltd  
Tel: +86 (21) 54178180  
Fax: +86 (21) 54178190  
E-Mail: [info@neumo.com.cn](mailto:info@neumo.com.cn)  
**CHINA**



**NEUMO UK Ltd.**  
Tel: +44 (0) 1952 583 999  
Fax: +44 (0) 1952 583 958  
E-Mail: [stainless@neumo.co.uk](mailto:stainless@neumo.co.uk)  
[www.neumo.co.uk](http://www.neumo.co.uk)  
**UNITED KINGDOM**



**AWH Armaturenwerke (D)**  
Hötensleben GmbH  
Tel: +49 (0) 39405 92 0  
Fax: +49 (0) 39405 92 111  
E-Mail: [info@awh.de](mailto:info@awh.de)  
[www.awh.de](http://www.awh.de)



**NEUMO**  
Tel: +353 (0)21 4975540  
Cel: +353 (0)87 2330469  
E-Mail: [dosullivan@neumo.de](mailto:dosullivan@neumo.de)  
[www.neumo.de/en/](http://www.neumo.de/en/)  
**IRELAND**



**Damstahl a/s (Denmark)**  
Tel: +45 (0) 8794 4000  
Fax: +45 (0) 8794 4150  
E-Mail: [ds@damstahl.com](mailto:ds@damstahl.com)  
[www.damstahl.dk](http://www.damstahl.dk)  
**DENMARK**

**Damstahl GmbH (D)**  
Tel: +49 (0) 2173 797 0  
Fax: +49 (0) 2173 797 274  
E-Mail: [ds@damstahl.de](mailto:ds@damstahl.de)  
[www.damstahl.de](http://www.damstahl.de)



**Damstahl a/s Oslo (N)**  
Tel: +47 5615 1570  
Fax: +47 5615 1571  
E-Mail: [dano@damstahl.com](mailto:dano@damstahl.com)  
[www.damstahl.no](http://www.damstahl.no)  
**NORWAY**



**Damstahl a/b (Sweden)**  
Tel: +46 87 61 71 00  
Fax: +46 87 61 14 05  
[www.damstahl.se](http://www.damstahl.se)  
**SWEDEN**

**Gebr. Rieger GmbH+Co. KG (D)**  
Tel: +49 (0) 7361 5702 0  
Fax: +49 (0) 7361 5702 51  
E-Mail: [info@rr-rieger.de](mailto:info@rr-rieger.de)  
[www.rr-rieger.de](http://www.rr-rieger.de)  
**GERMANY**