



***VNE***

***Manufacturing***

**1149 barberry drive Janesville WI.**

## ***VNE Corporation***

- **71 total VNE personnel**
- **60,000 Sq. Ft. facility, sales, warehouse and manufacturing**
- **Manufacturing standard fittings 1/2" - 12" diameter as well as special fabrications including but not limited to manifolds, dip tubes etc.**



***CUSTOM FABRICATION FOR  
THE FOOD, DAIRY,  
BEVERAGE  
PHARMACEUTICAL &  
BIOTECH INDUSTRIES.***

# Meet the staff



Plant Manager

John Punzel

[jpunzel@vnecorp.com](mailto:jpunzel@vnecorp.com)



Fabrications Coordinator

Chanda Miller

[ccmillcmilleer@vnecorp.com](mailto:ccmillcmilleer@vnecorp.com)



Expeditor

Michelle Kramer

[mkramer@vnecorp.com](mailto:mkramer@vnecorp.com)



Design Technician

Sally Blue

[sblue@VNECORP.com](mailto:sblue@VNECORP.com)



**MaxPure**

**MaxCore**

## Large Inventory of Raw Material For Manufacturing



Domestic Tubing and Solid Bar





# Certified Expert Welders



**MaxPure**

**MaxCore**



# OD Polishing

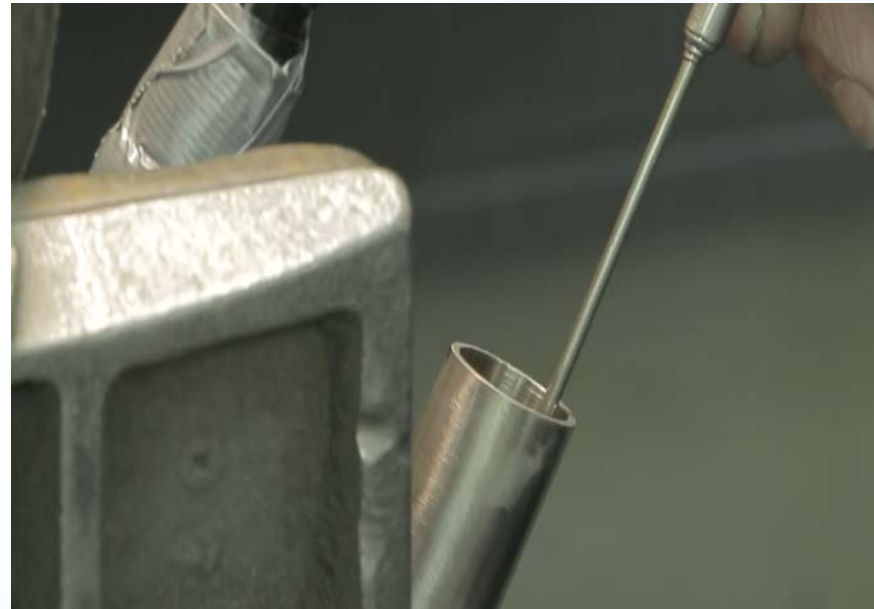
From ½ - 12.0 32 RA Finish

**MaxPure**

**MaxCore**

# ID Polishing

*From a standard 30 RA ID to an SF4 15 RA EP. ID*



**MaxPure**

**MaxCore**

## *Customer Collaboration*



**MaxPure**

**MaxCore**

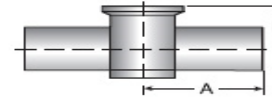
*Precise documentation*  
*with Full Traceability*

**MaxPure**

**MaxCore**

**Material Test Certificate**

**Job\Cert Number** 5004055968  
**Part Number** TE7IWWC S6L1.5X2.0-PL  
**Part Description** INSTRUMENT TEE, T316L 20 Ra Max ID /32 Ra OD  
**Material Specification** 316/316L  
**Standard** BPE 2016 SF1  
**Date of Certification** May 16, 2019



BPE TABLE # DT-28

**Raw Material Specifications**

EN 10204:2004 3.1

Heat Number	Inspection Number	Raw Material & Size		Material Standards
		(mm)	(Inch)	
586R	306757703	Tube 38.10	1.50	ASTM A249-16a, A269-15a, A270-S2-15/ASME SA249-17
900C	306817602	Solid 76.20	3.00	ASTM A276-17, A479-18/ASME SA479-18
BOK001-ABH	3065856	Plate 66.55	2.62	ASTM A240, A240M-11 / ASME SA240, SA240M-2007

**Component Chemical Composition**

Heat Number	%C	%CR	%MN	%MO	%N	%NI	%P	%S	%SI	%Cu
586R	0.016	16.691	1.572	2.042	0.047	10.007	0.030	0.011	0.295	n/a
900C	0.025	16.680	1.280	2.086	0.035	10.610	0.031	0.028	0.220	n/a
BOK001-ABH	0.020	16.700	1.180	2.100	0.050	10.100	0.027	0.001	0.500	n/a

**Mechanical Test**

Heat Number	Yield 0.2		Yield 1.0		Tensile		Hardness	Elongation	Reduction
	(N/mm <sup>2</sup> )	(PSI)	(N/mm <sup>2</sup> )	(PSI)	(N/mm <sup>2</sup> )	(PSI)	(HRB)	(%)	(%)
586R	320	46470	n/a	n/a	618	89670	83	49.00	n/a
900C	262	38000	n/a	n/a	566	82000	77	58.00	69.00
BOK001-ABH	338	49000	n/a	n/a	593	86000	81	52.00	n/a

**Mechanical Test (Cont.)**

Heat Number	Eddy Current Test	Visual & Dimensional Test	Flaring Test	Flattening Test	Intergranular Corrosion Test	Material Identification Test
586R	OK	OK	OK	OK	OK	OK
900C	OK	OK	N/A	N/A	OK	OK
BOK001-ABH	OK	OK	N/A	OK	OK	OK

We certify that this information is a true representation of the data that has been furnished by our raw material suppliers. We have no knowledge of any mercury of low melting contamination. Examined according to AD 2000-Merkblatt HP 0 and TRD 201 in conjunction with EN 729-2, by TUV CERT. Certification number: BB-DDB-MAN-P-03-1613

Approved By: Sandra Lohmeier, QCM



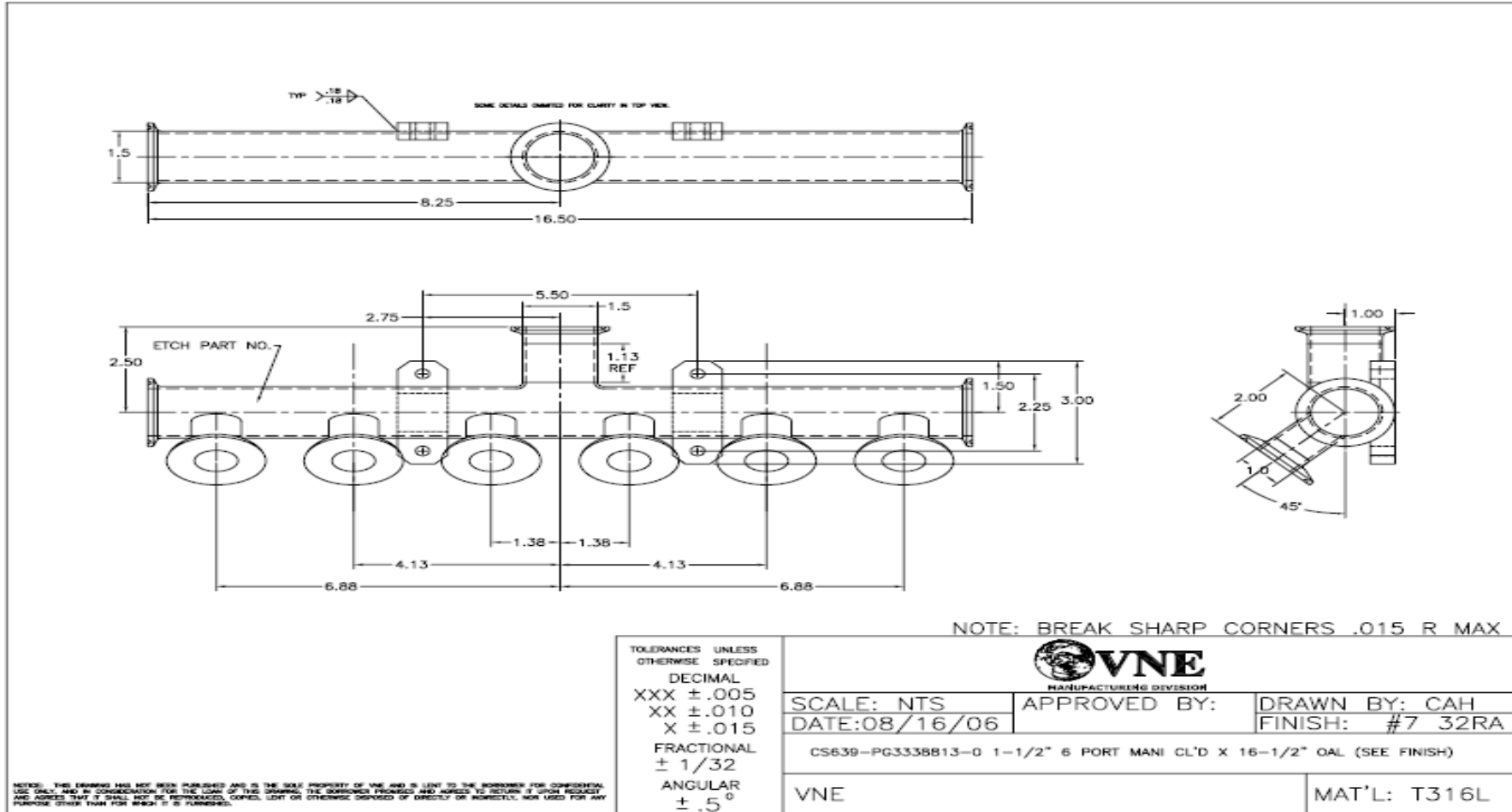
Neumo EGMO Ltd.  
 Ehrenberg P.O.B. 1111  
 Group Nahariya 22110 Israel  
 Tel: 972-4-9855121  
 Fax: 972-4-9825810  
 http://www.egmo.co.il

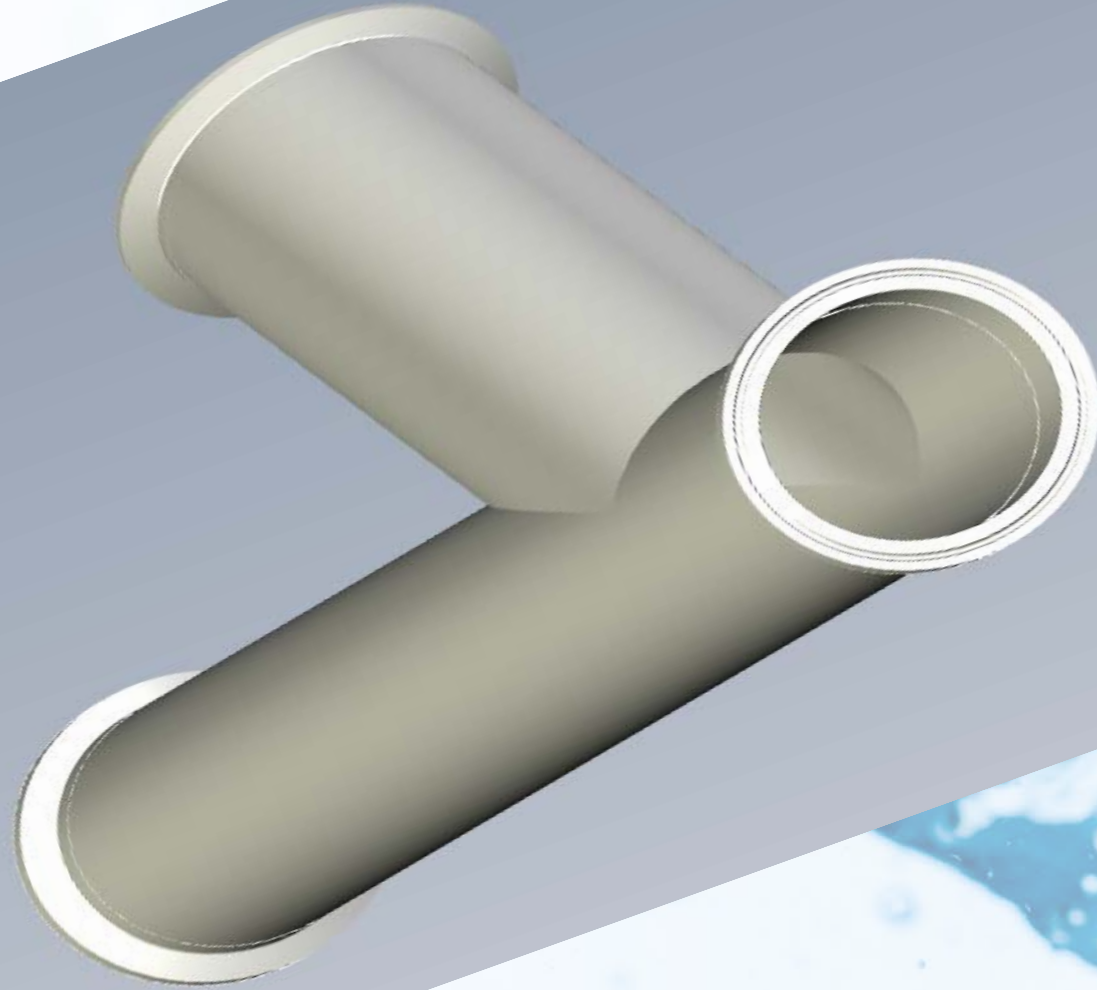
NEUMO GmbH  
 Postfach 1163 D-75438  
 Knittlingen, Germany  
 Tel: +49(0)7043360  
 Fax: +49(0)7043361 30  
 http://www.neumo.de

AWH Armaturenwerke  
 Schulstrasse 5-6, Germany  
 D- 39393 Hotensleben  
 Tel: 49(0) 39405 92 0  
 Fax: 49 (0) 39405 92 111  
 Email: AWH-Edelstahl@t-online.de

VNE Corporation  
 P. O. Box 1698-1149 Barberry  
 Drive  
 Janesville, WI 53547-1698 / USA  
 Tel: 608-756-4930  
 Fax: 608-756-3643  
 http://www.vnestainless.com

# Cad drawings







1149 Barberry Dr. PO BOX 1698 Janesville WI. 53546 phone # 608-756-4930 / fax # 608-756-3643

<b>PROJECT:</b>	<b>WELD MAP / Quality Control Documentation/ Weld &amp; Heat # Compliance Record</b>
<b>DESCRIPTION:</b> 1.5" X .75" HOSE ADPT.	
<b>PART #</b>	

Weld No.	Weld Description	Size	Material Type Cast/Heat No.	Weld Date	Weld Procedure	Welder Initial
W1	1.5" X.75"		316L	6/1/2015	Manual Fillet Weld	KT
		1.5	1211127			
	HOSE ADPT	0.75	536824			
W2					Manual Fillet Weld	
W3			316L		Manual Fillet Weld	
W4			316L		Manual Fillet Weld	
W5			316L		Manual Fillet Weld	
W6			316L		AMI ORBITAL	

<b>Customer:</b>	<b>P.O. No.:</b>	<b>5212</b>
<b>All welds performed in accordance with ASME BPE-2012 Part MJ &amp; ASME Section IX standards.</b>	<b>Quantity:</b>	<b>1</b>
	<b>Welder's Name: KODY TRAWICKI</b>	
<b>Inspected by:</b>		
<b>Qualified by:</b>	<b>SANDI LOHMEIER</b>	
<b>JOHN PUNZEL</b>	<b>QC Supervisor</b>	
<b>Welding Supervisor</b>	<b>Date:</b>	<b>6/1/2015</b>

***State of the art equipment !!***

**MaxPure**

**MaxCore**

## Haas CNC Lathes



# *Tree Journeyman 425* *CNC Vertical* *Milling Machine*



# HYDMECH horizontal Saw



# *Band saw*



*Ability to cut ¼" up to 14.0"*

**MaxPure**

**MaxCore**

# TYKMA–Minilase XL

## Laser marking system

- Capabilities include
  - Company Logos
  - Heat numbers
  - Part numbers
  - Bar codes







# Pin Print Etching Machine



# *Quality Assurance Guaranteed*

**MaxPure**

**MaxCore**

# *Quality Control / Inspection*



**MaxPure**

**MaxCore**

# Niton XL2



*Every special tested to guarantee material composition*

**MaxPure**

**MaxCore**

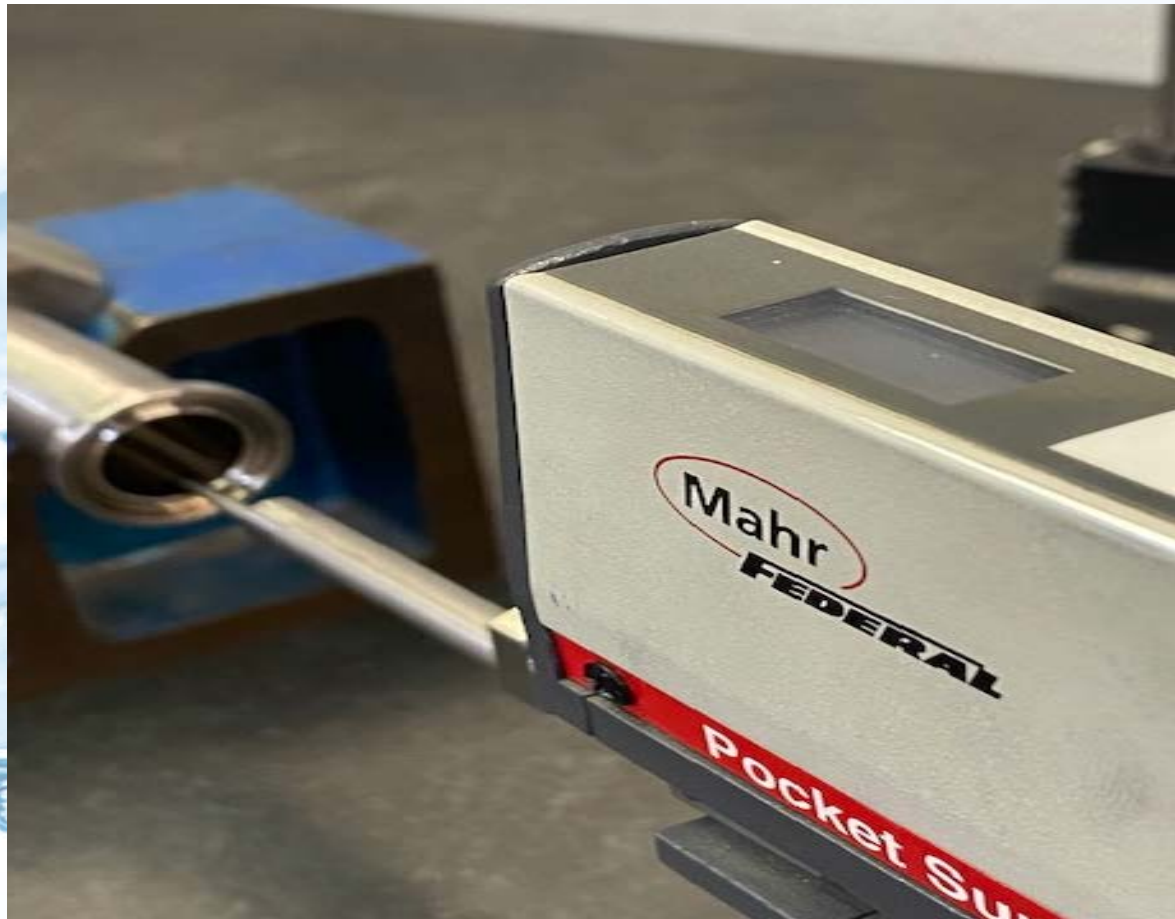


**MaxPure**

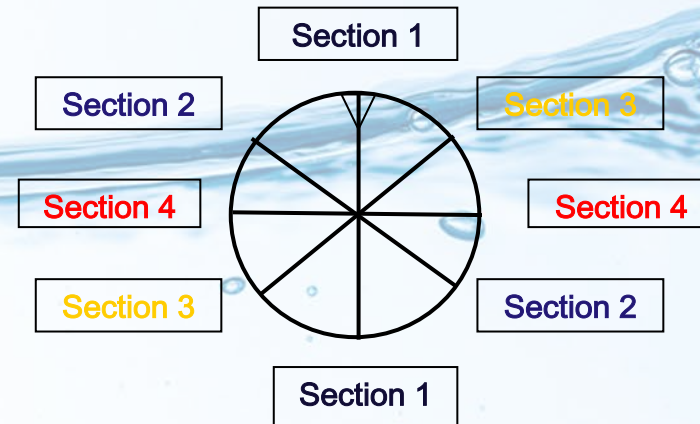
*DVT video borescope for internal inspection*

**MaxCore**

## *Profalometers For Guaranteed Surface Finishes*



# I.D. measuring at 4 sections







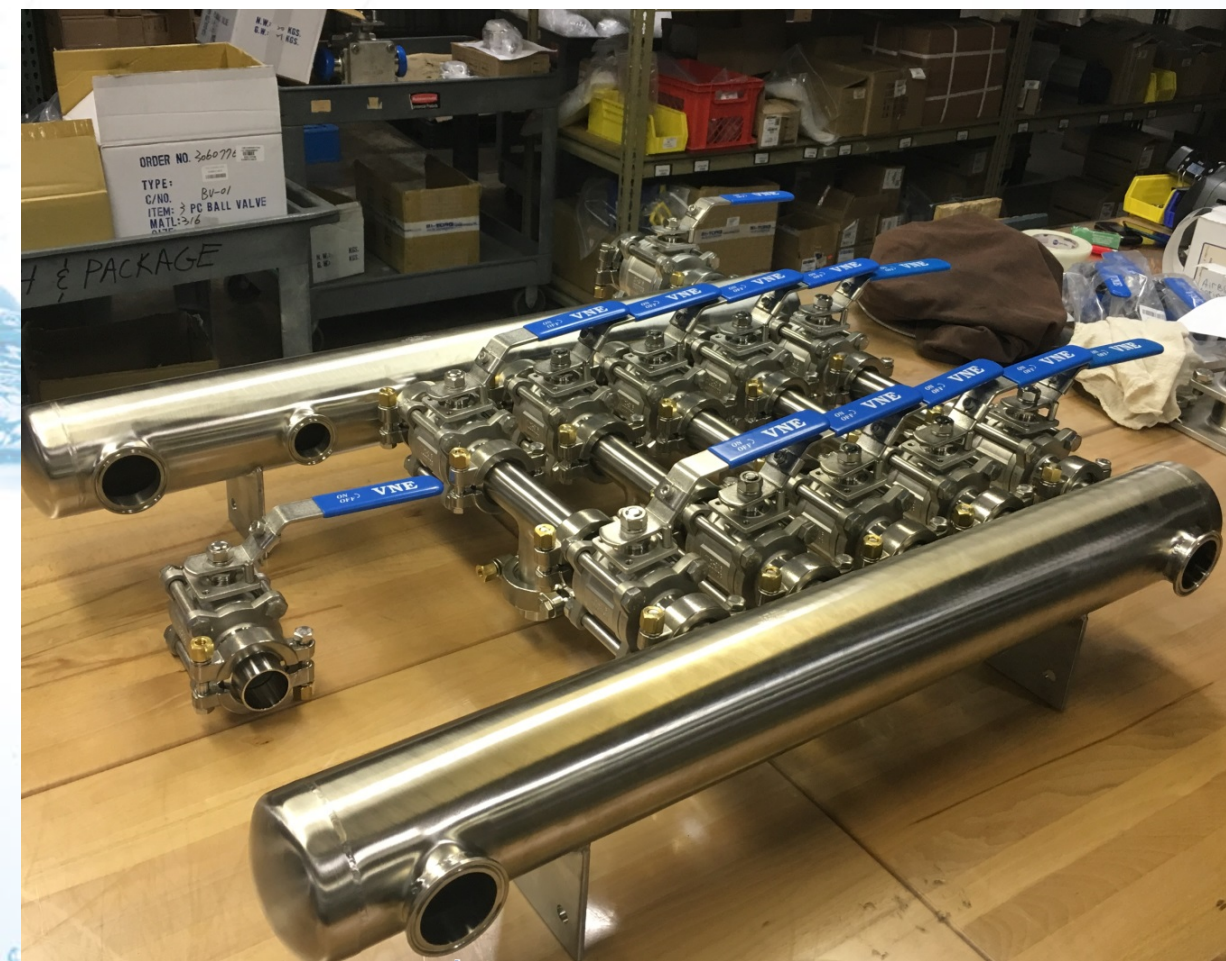
# Custom Y's



**MaxPure**

**MaxCore**

# CUSTOM VALVE MANIFOLDS



**MaxPure**

**MaxCore**





# Thanks!

**Any questions?**