





A photograph of a complex industrial piping system made of stainless steel. The pipes are arranged in a dense, multi-level network with many bends and curves. The lighting is bright, highlighting the metallic sheen of the pipes. In the background, a red-handled valve is visible on one of the pipes.

***VNE***

***Manufacturing***

**1149 barberry drive Janesville WI.**



# **VNE Corporation**

- **71 total VNE personnel**
- **60,000 Sq. Ft. facility, sales, warehouse and manufacturing**
- **Manufacturing standard fittings 1/2"- 12" diameter as well as special fabrications including but not limited to manifolds, dip tubes etc.**
- **Special fabrications available in a wide range of materials, including 316/316L and 304 stainless steel. Exotic materials including Hastelloy C22®, Hastelloy C276® & AL-6XN®.**







***CUSTOM FABRICATION FOR  
THE FOOD, DAIRY,  
BEVERAGE  
PHARMACEUTICAL &  
BIOTECH INDUSTRIES.***

# Meet our Special Fabrications staff



Plant Manager

John Punzel

[jpunzel@vnecorp.com](mailto:jpunzel@vnecorp.com)



Fabrications Coordinator

Chanda Miller

[ccmillcmilleer@vnecorp.com](mailto:ccmillcmilleer@vnecorp.com)



Expeditor

Michelle Kramer

[mkramer@vnecorp.com](mailto:mkramer@vnecorp.com)



Design Technician

Sally Blue

[sblue@VNECORP.com](mailto:sblue@VNECORP.com)





**MaxPure**

**MaxCore**



# Large Inventory of Raw Material For Manufacturing



Domestic Tubing and Solid Bar





# Certified Expert Welders



**MaxPure**

**MaxCore**





# OD Polishing

From 1/2 - 12.0 32 RA Finish



**MaxPure**

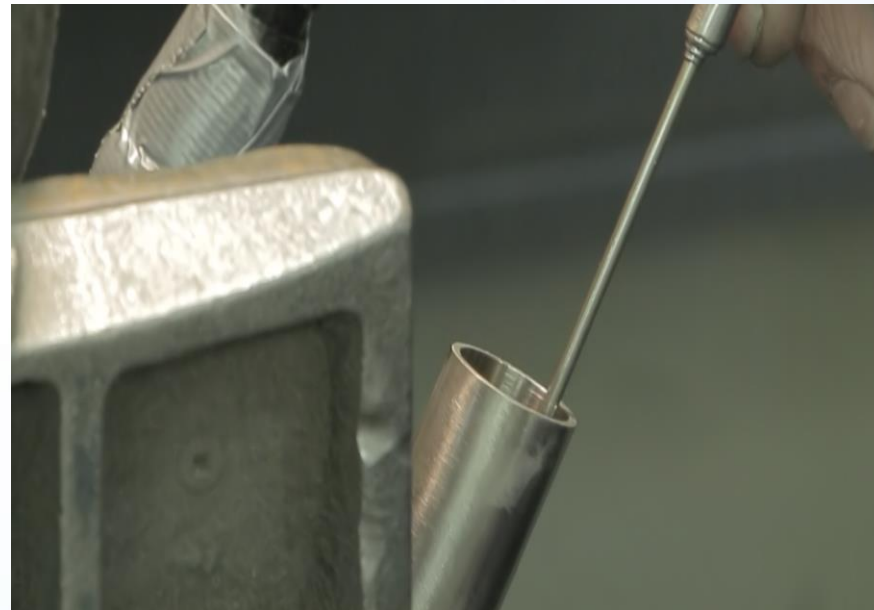


**MaxCore**



# ID Polishing

*From a standard 30 RA ID to an SF4 15 RA EP. ID*



**MaxPure**

**MaxCore**



# Customer Collaboration



**MaxPure**

**MaxCore**



*Precise documentation*  
*with Full Traceability*

**MaxPure**

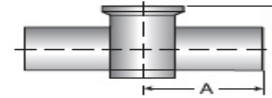
**MaxCore**



**VNE Corporation**

**Material Test Certificate**

**Job\Cert Number** 5004055968  
**Part Number** TE7IWWC S6L1.5X2.0-PL  
**Part Description** INSTRUMENT TEE, T316L 20 Ra Max ID /32 Ra OD  
**Material Specification** 316/316L  
**Standard** BPE 2016 SF1  
**Date of Certification** May 16, 2019



BPE TABLE # DT-28

**Raw Material Specifications**

EN 10204:2004 3.1

| Heat Number | Inspection Number | Raw Material & Size |        | Material Standards                                |
|-------------|-------------------|---------------------|--------|---|
|             |                   | (mm)                | (Inch) |   |
| 586R        | 306757703         | Tube 38.10          | 1.50   | ASTM A249-16a, A269-15a, A270-S2-15/ASME SA249-17 |
| 900C        | 306817602         | Solid 76.20         | 3.00   | ASTM A276-17, A479-18/ASME SA479-18               |
| BOK001-ABH  | 3065856           | Plate 66.55         | 2.62   | ASTM A240, A240M-11 / ASME SA240, SA240M-2007     |

**Component Chemical Composition**

| Heat Number | %C    | %CR    | %MN   | %MO   | %N    | %NI    | %P    | %S    | %SI   | %Cu |
|-------------|-------|--------|-------|-------|-------|--------|-------|-------|-------|-----|
| 586R        | 0.016 | 16.691 | 1.572 | 2.042 | 0.047 | 10.007 | 0.030 | 0.011 | 0.295 | n/a |
| 900C        | 0.025 | 16.680 | 1.280 | 2.086 | 0.035 | 10.610 | 0.031 | 0.028 | 0.220 | n/a |
| BOK001-ABH  | 0.020 | 16.700 | 1.180 | 2.100 | 0.050 | 10.100 | 0.027 | 0.001 | 0.500 | n/a |

**Mechanical Test**

| Heat Number | Yield 0.2            |       | Yield 1.0            |       | Tensile              |       | Hardness | Elongation | Reduction |
|-------------|----------------------|-------|----------------------|-------|----------------------|-------|----------|------------|-----------|
|             | (N/mm <sup>2</sup> ) | (PSI) | (N/mm <sup>2</sup> ) | (PSI) | (N/mm <sup>2</sup> ) | (PSI) | (HRB)    | (%)        | (%)       |
| 586R        | 320                  | 46470 | n/a                  | n/a   | 618                  | 89670 | 83       | 49.00      | n/a       |
| 900C        | 262                  | 38000 | n/a                  | n/a   | 566                  | 82000 | 77       | 58.00      | 69.00     |
| BOK001-ABH  | 338                  | 49000 | n/a                  | n/a   | 593                  | 86000 | 81       | 52.00      | n/a       |

**Mechanical Test (Cont.)**

| Heat Number | Eddy Current Test | Visual & Dimensional Test | Flaring Test | Flattening Test | Intergranular Corrosion Test | Material Identification Test |
|-------------|-------------------|---------------------------|--------------|-----------------|------------------------------|------------------------------|
| 586R        | OK                | OK                        | OK           | OK              | OK                           | OK                           |
| 900C        | OK                | OK                        | N/A          | N/A             | OK                           | OK                           |
| BOK001-ABH  | OK                | OK                        | N/A          | OK              | OK                           | OK                           |

We certify that this information is a true representation of the data that has been furnished by our raw material suppliers. We have no knowledge of any mercury of low melting contamination. Examined according to AD 2000-Merkblatt HP 0 and TRD 201 in conjunction with EN 729-2, by TUV CERT. Certification number: BB-DDB-MAN-P-03-1613

Approved By: Sandra Lohmeier, QCM



Neumo Ehrenberg Group

EGMO Ltd.  
P.O.B. 1111  
Nahariya 22110 Israel  
Tel: 972-4-9855121  
Fax: 972-4-9825810  
<http://www.egmo.co.il>

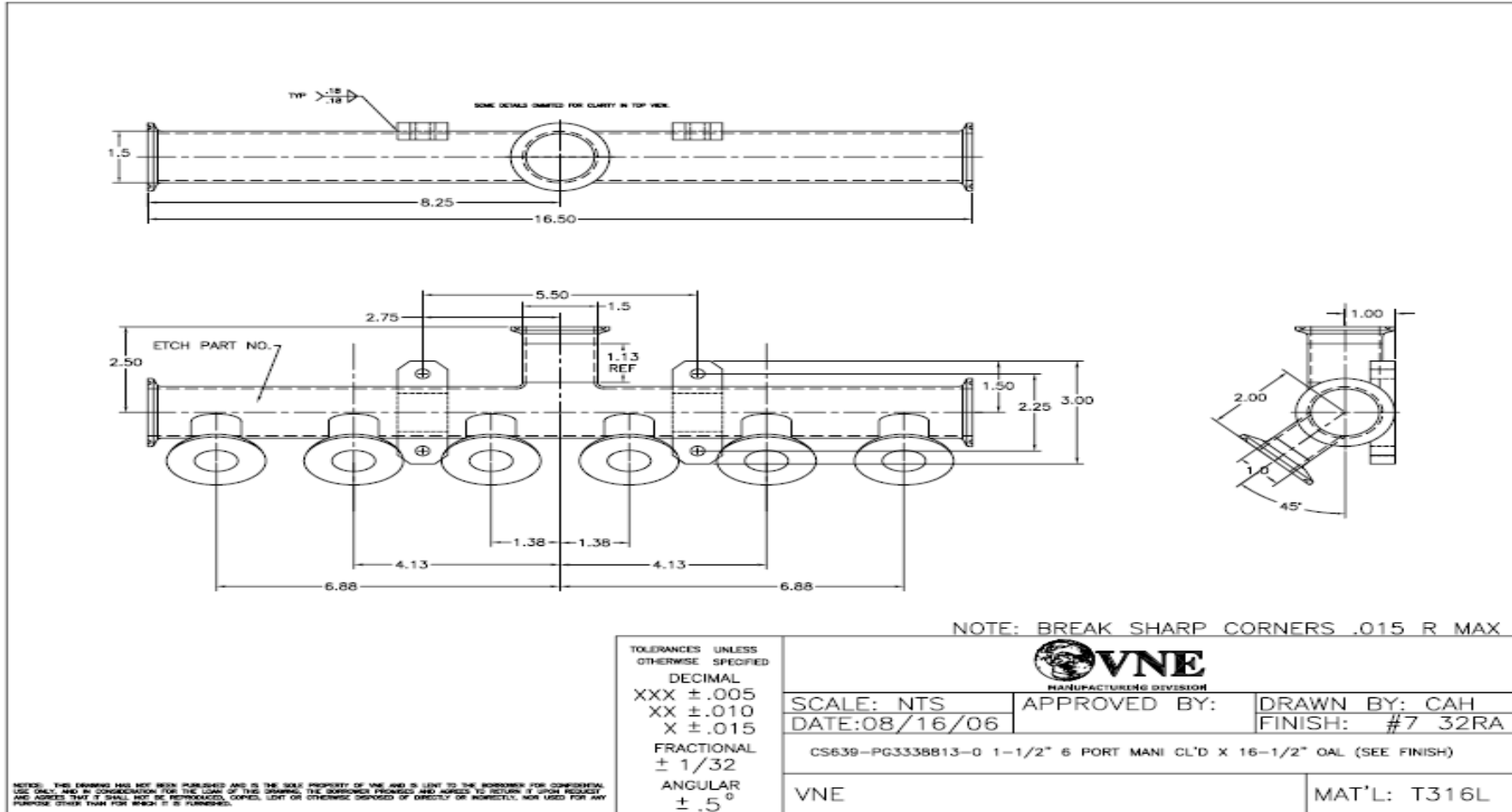
NEUMO GmbH  
Postrach 1163 D-75438  
Knittlingen, Germany  
Tel: +49(0)7043360  
Fax: +49(0)7043361 30  
<http://www.neumo.de>

AWH Armaturenwerke  
Schulstrasse 5-6, Germany  
D- 39393 Hotensleben  
Tel: 49(0) 39405 92 0  
Fax: 49 (0) 39405 92 111  
Email: AWH-Edelstahl@t-online.de

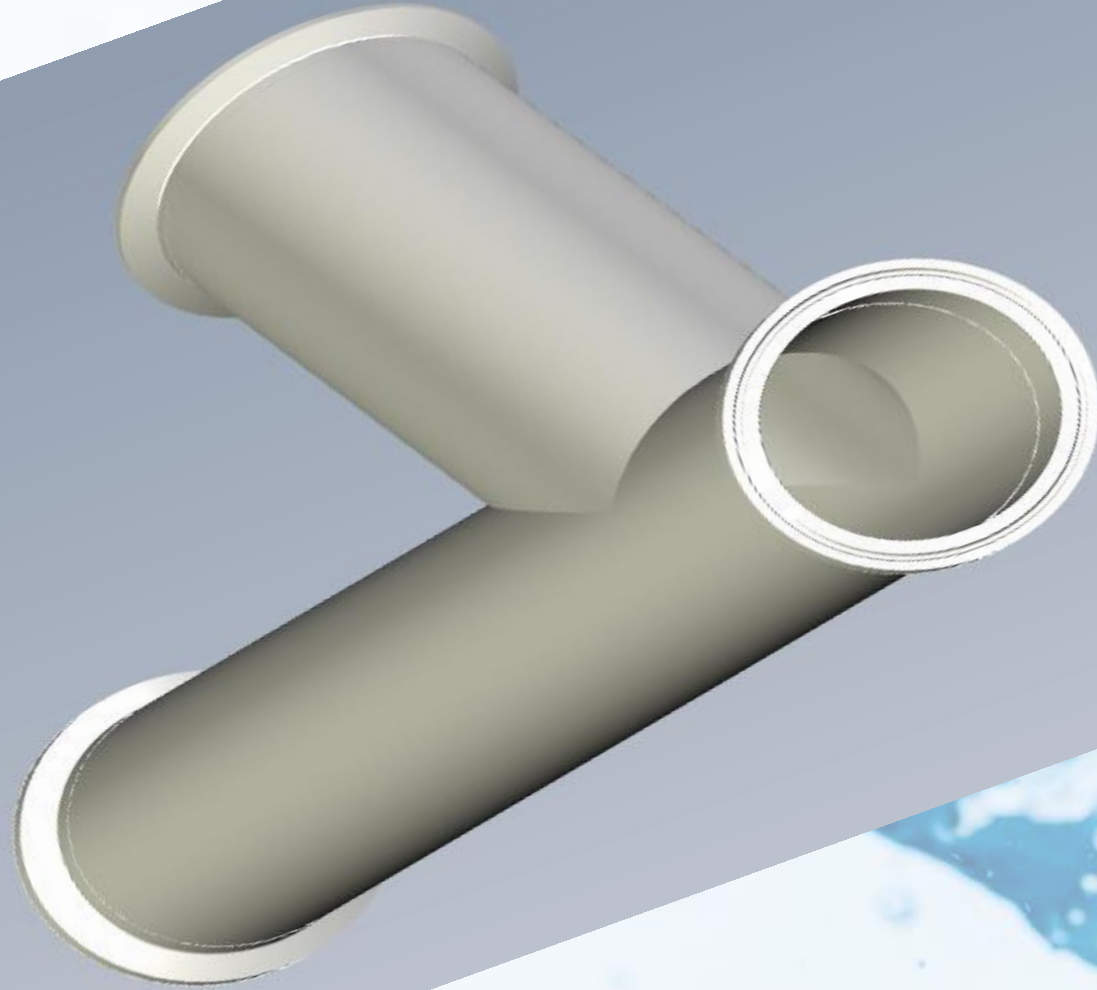
VNE Corporation  
P. O. Box 1698-1149 Barberry Drive  
Janesville, WI 53547-1698 / USA  
Tel: 608-756-4930  
Fax: 608-756-3643  
<http://www.vnestainless.com>



# Cad drawings









1149 Barberry Dr. PO BOX 1698 Janesville WI. 53546 phone # 608-756-4930 / fax # 608-756-3643

|                                     |  |  |  |  |  |  |  |
|-------------------------------------|--|--|--|--|--|--|--|
| PROJECT:                            | <b>WELD MAP / Quality Control Documentation/<br/>Weld &amp; Heat # Compliance Record</b> |  |  |  |  |  |  |
| DESCRIPTION: 1.5" X .75" HOSE ADPT. |  |  |  |  |  |  |  |
| PART #                              |  |  |  |  |  |  |  |

| Weld No. | Weld Description | Size | Material Type<br>Cast/Heat No. | Weld Date | Weld Procedure        |  | Welder Initial |
|----------|------------------|------|--------------------------------|-----------|-----------------------|--|----------------|
| W1       | 1.5" X.75"       |      | 316L                           | 6/1/2015  | Manual Fillet<br>Weld |  | KT             |
|          |                  | 1.5  | 1211127                        |           |                       |  |                |
|          | HOSE ADPT        | 0.75 | 536824                         |           |                       |  |                |
| W2       |                  |      |                                |           | Manual Fillet<br>Weld |  |                |
| W3       |                  |      | 316L                           |           | Manual Fillet<br>Weld |  |                |
| W4       |                  |      | 316L                           |           | Manual Fillet<br>Weld |  |                |
| W5       |                  |      | 316L                           |           | Manual Fillet<br>Weld |  |                |
| W6       |                  |      | 316L                           |           | AMI ORBITAL           |  |                |

|   |                              |          |
|---|------------------------------|----------|
| Customer:   | P.O. No.:                    | 5212     |
| All welds performed in accordance with ASME BPE-2012 Part MJ & ASME Section IX standards. | Quantity:                    | 1        |
|   | Welder's Name: KODY TRAWICKI |          |
| Inspected by:   | SANDI LOHMEIER               |          |
| Qualified by:   | JOHN PUNZEL                  |          |
| Welding Supervisor  | QC Supervisor                |          |
|   | Date:                        | 6/1/2015 |

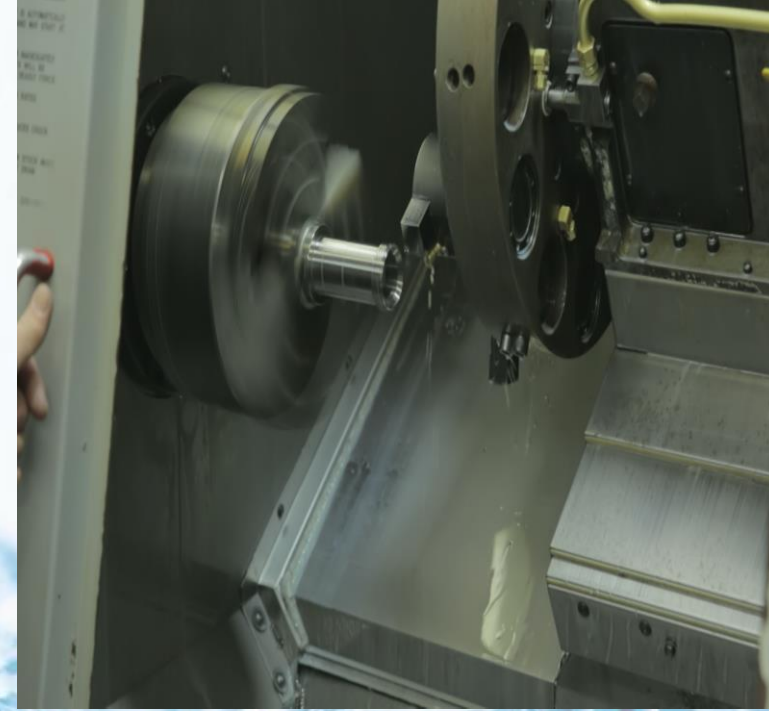
*State of the art equipment !!*

**MaxPure**

**MaxCore**



# Haas CNC Lathes



*Tree Journeyman 425*  
*CNC Vertical*  
*Milling Machine*





# HYDMECH horizontal Saw





# Band saws



*Ability to cut 1/4" up to 14.0"*



# TYKMA–Minilase XL

Laser marking system

- Capabilities include
  - Company Logos
  - Heat numbers
  - Part numbers
  - Bar codes







# Pin Print Etching Machine



# *Quality Assurance Guaranteed*

**MaxPure**

**MaxCore**



# *Quality Control / Inspection*



**MaxPure**

**MaxCore**

# Niton XL2



*Every special tested to guarantee material composition*

**MaxPure**

**MaxCore**



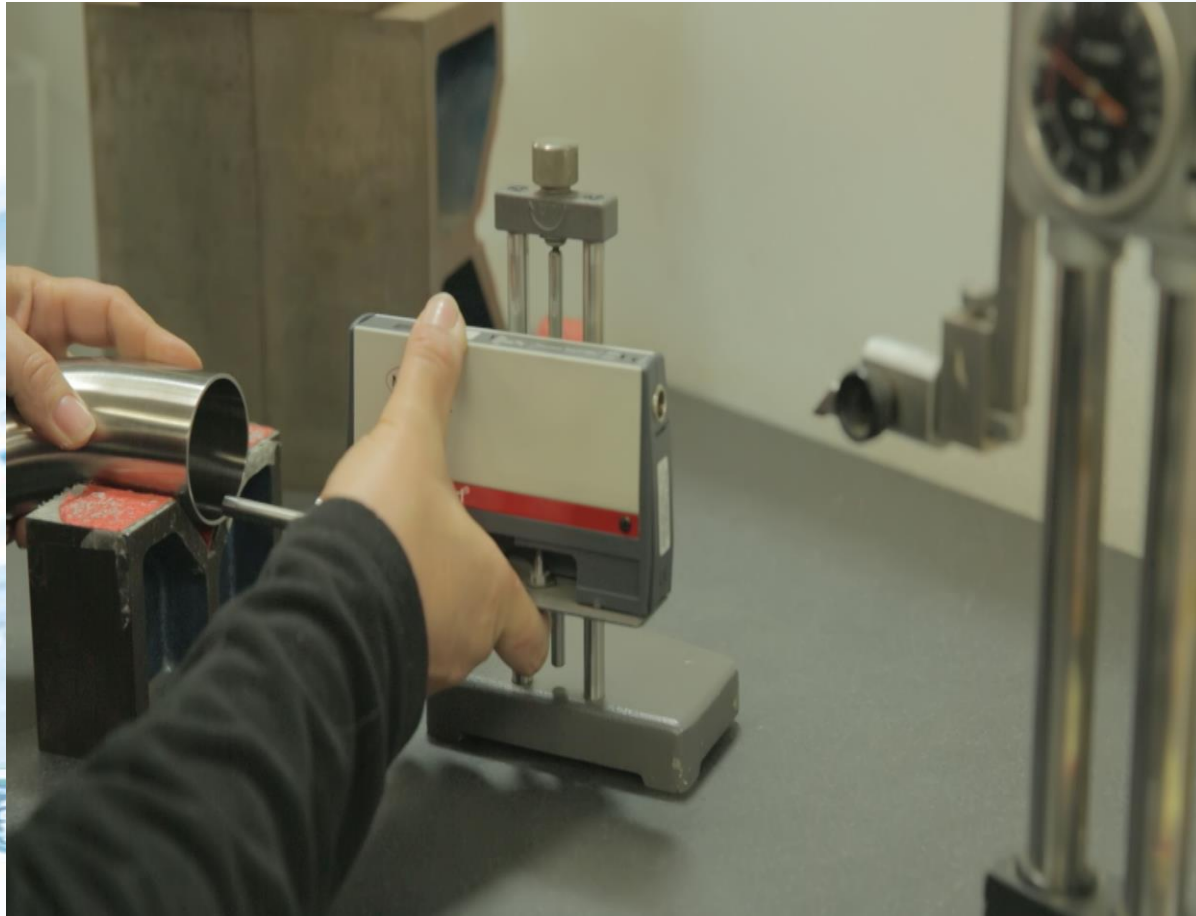


**MaxPure**

*DVT video borescope for internal inspection*

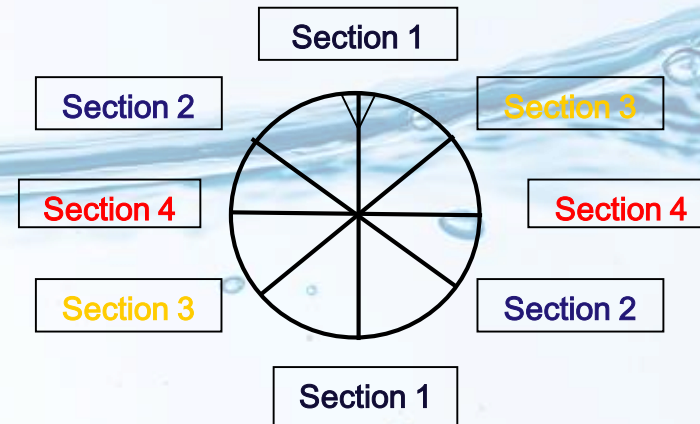
**MaxCore**

## *Profilometers For Guaranteed Surface Finishes*





# O.D. measuring at 4 sections



**MaxPure**

**MaxCore**



**MaxPure**



**MaxCore**

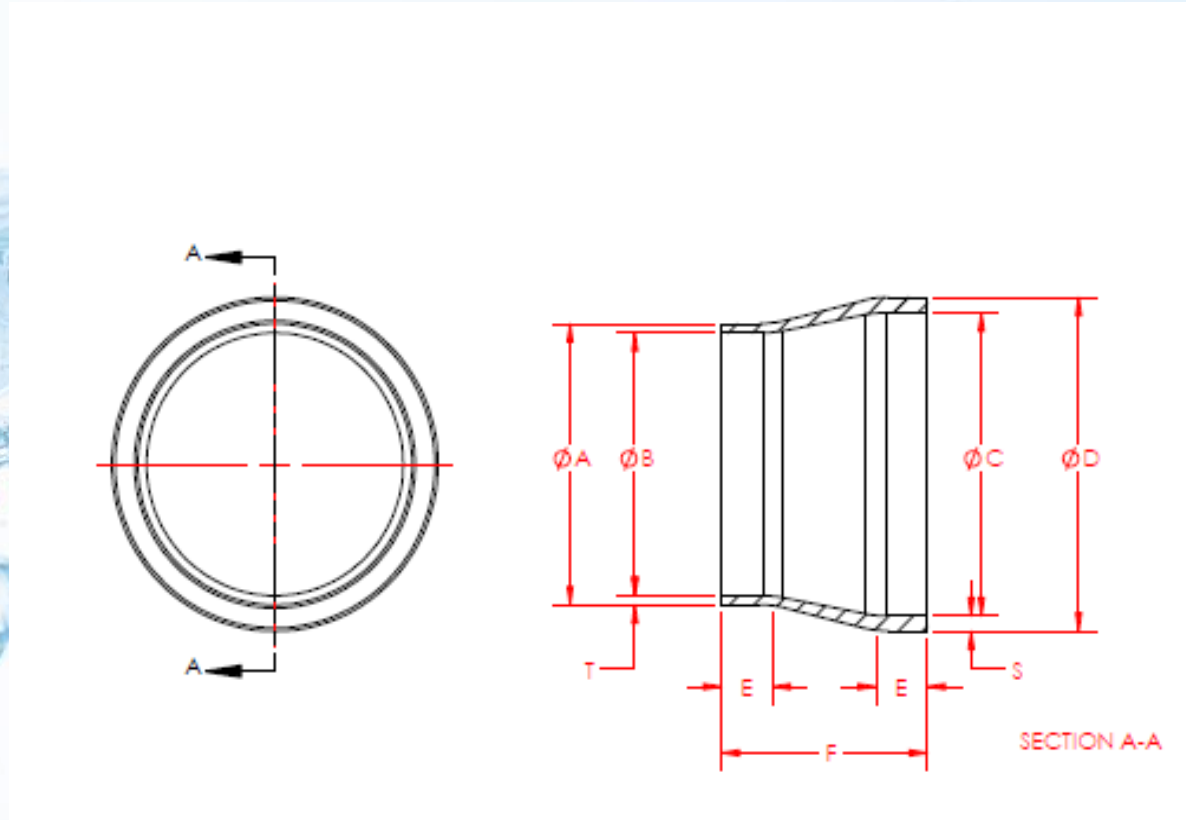


# *Transitions*

Tube by sch5, 10 & 40  
(pipe)

Tube by Din 11866/11850  
series (metric)

Tube by ISO 1127 series



# Custom Y's

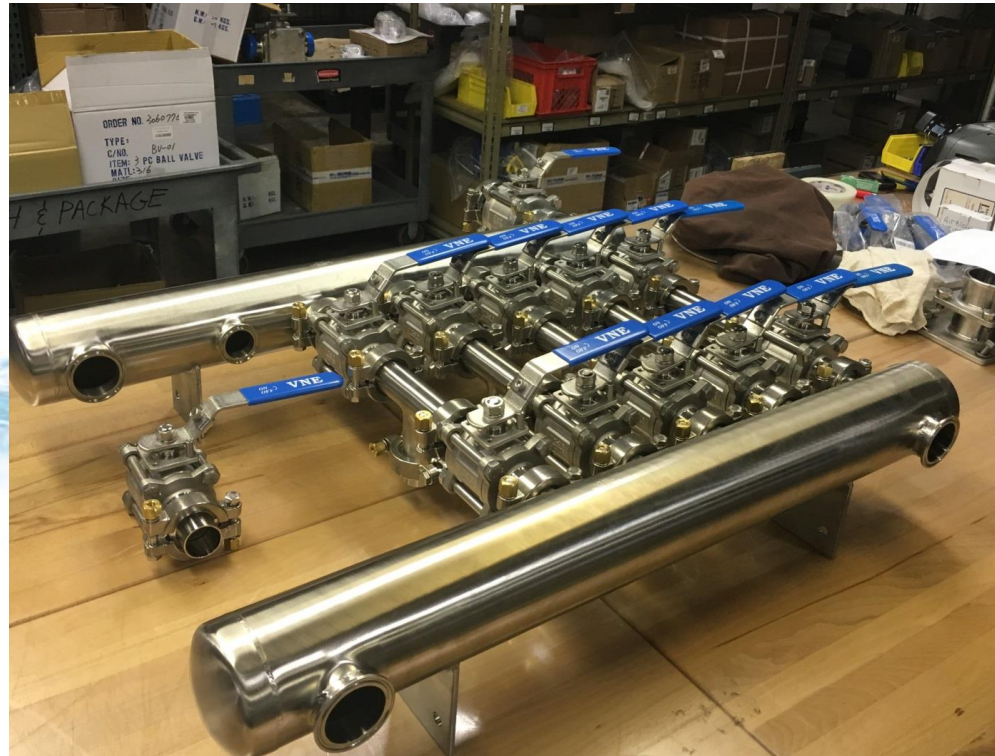


**MaxPure**

**MaxCore**



# CUSTOM VALVE MANIFOLDS



**MaxPure**



**MaxCore**



