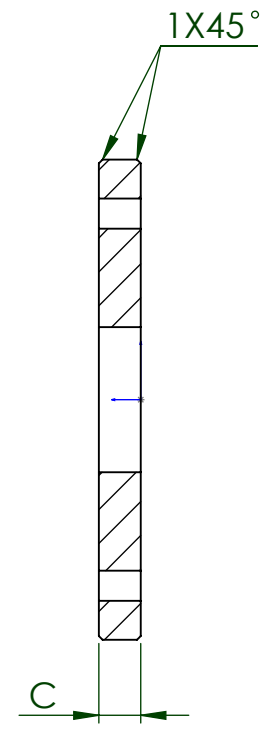
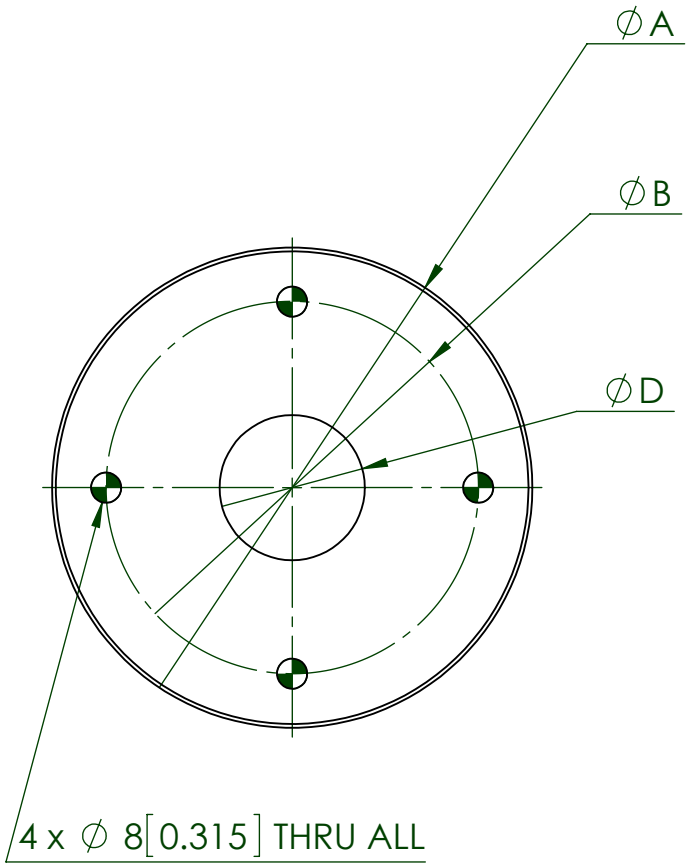


CODE	SIZE	A		B		C		D	
		[mm]	[inch]	[mm]	[inch]	[mm]	[inch]	[mm]	[inch]
E38SL-6L1.0	1.0	108.0	4.250	79.4	3.125	9.5	0.375	25.7	1.010
E38SL-6L1.5	1.5	127.0	5.000	98.4	3.875	11.1	0.437	38.4	1.510
E38SL-6L2.0	2.0	152.4	6.000	120.7	4.750	12.7	0.500	51.1	2.010
E38SL-6L2.5	2.5	177.8	7.000	139.7	5.500	14.3	0.562	63.8	2.510
E38SL-6L3.0	3.0	190.5	7.500	152.4	6.000	15.9	0.625	76.5	3.010
E38SL-6L4.0	4.0	228.6	9.000	190.5	7.500	17.5	0.689	101.9	4.010
E38SL-6L6.0	6.0	297.4	11.000	241.3	9.500	20.6	0.811	152.9	6.010



	<b>EGMO LTD.</b> Tanks and stainless steel accessories P.O.B. 1111, 1 Hayotsrim St. 22110 Nahariya Israel Tel. 972-4-9855175 Fax: 972-4-9855173		
	<b>Ordering Code:</b> E38SL-6L..	<b>Drawn</b> <b>Guy.S</b>	<b>4/20/2015</b>
	<b>Approved</b> <b>Alex.L</b>	<b>4/20/2015</b>	
	<b>Material:</b> AISI 316L		
©2014 EGMO Ltd. All rights reserved. The information on this drawing may not be reproduced or republished without prior consent of EGMO Ltd	<b>Finish:</b> ASME BPE-2012 (Per ordering)		
	<b>Size - A4</b>	<b>Rev: 0</b>	
	<b>Sheet 1 From 1</b>		